

December 20, 2018

**Subject: Transformative Climate Communities Program: Round II
Implementation Grant Awards**

Reporting Period: December 2018

Staff Lead: Saharnaz Mirzazad, TCC Program Manager

Recommended Actions:

Approve staff recommendation to award \$46 million in Greenhouse Gas Reduction Funds for the FY 2018-2019 Transformative Climate Communities Program to the following two Transformative Climate Communities Projects:

- | | |
|--|--------------|
| 1) Community Partners: Green Together, NE Valley | \$23,000,000 |
| 2) Sacramento Housing and Redevelopment Agency
Sacramento: Integrated Multimodal Place-based Living | \$23,000,000 |

The awarded applicants will be required to address issues identified during the application review process and post-award negotiation prior to grant agreement execution.

Background:

On September 14, 2016, Governor Brown signed AB 2722 (Burke), which created the Transformative Climate Communities (TCC) Program, a California Climate Investment (CCI) grant program administered by the Strategic Growth Council, in partnership with the Department of Conservation (DOC) and other State agencies. The TCC Program furthers the purposes of AB 32 (Nunez, Chapter 488, Statutes of 2006) and AB 2722 (Burke, Chapter 371, Statutes of 2016) by funding projects that reduce GHG emissions through the development and implementation of neighborhood-level transformative climate community plans that include multiple, coordinated GHG emissions reduction projects that provide local economic, environmental, and health benefits to disadvantaged communities. Funding for the TCC Program is provided by Greenhouse Gas Reduction Fund (GGRF), an account established to receive Cap-and-Trade auction proceeds.

On January 29, 2018, the Council awarded \$133,000,000 in TCC Round I Implementation Grants to three projects:

- City of Fresno: Transform Fresno
- City of Ontario: Ontario Connects
- Housing Authority of the City of Los Angeles: Watts Rising Collaborative.

Round I awards were made through a competitive process in accordance with a regional allocation adopted by the Council on December 6, 2016.

The TCC Round II Implementation Grants will award \$46,000,000 that includes \$10,000,000 from a FY 2017-2018 budget appropriation and \$40,000,000 from a FY 2018-2019 budget appropriation. Of these appropriations, \$4,000,000 will be used for grant administration, program

evaluation, and monitoring costs to be conducted or contracted for by the State. TCC Round II Implementation Grant awards are awarded competitively among eligible disadvantaged community areas, as identified in Appendix C, “TCC Mapping Tool for Eligible Project Areas and Planning Areas,” of the TCC Guidelines. The grant term will be approximately 5 years.

2018 Round II - Application Process:

The Council adopted the FY 2018-19 TCC Program Guidelines on July 31, 2018. SGC and DOC released the Notice of Funding Availability (NOFA) on August 15, 2018. The NOFA was updated on October 2, 2018, which provided an update on the funding availability.

Round I included a two-phase application process. In Round II, applicants submitted a single application. Applications were due by October 30, 2018.

SGC received a total of four (4) applications, listed below:

Table 1: TCC Round II Implementation Grants Applicants

Proposal Name	Lead Applicant	Location
Green Together: NE Valley	Community Partners	Pacoima Community in East San Fernando Valley, Los Angeles
Pathways to Health	County of Riverside Economic Development Agency	Riverside
Rooted in East Oakland	City of Oakland	East Oakland
Sacramento Integrated Multimodal Place-Based Living (SIMPL)	Sacramento Housing and Redevelopment Agency	Sacramento

Technical Assistance

TCC Program Staff hosted a webinar on August 28, 2018 that provided an overview on Implementation Grants and the application process. A recording of the Implementation Grants webinar and a pre-recorded webinar demonstrating how to use and upload materials into the Financial Assistance Application Submittal Tool (FAAST) system was made available on the SGC website.

To support the development of competitive applications and to build the capacity of applicants from the State’s most disadvantaged communities, SGC provided technical assistance (TA) that was required to be used by any eligible applicants interested in applying for an Implementation Grant. The firm Estolano LeSar Advisors coordinated a team of consultants to provide TA. The technical assistance supported TCC applicants in the development of their project scope, calculation of greenhouse gas emission reductions, and developing a complete application. In order to match potential applicants with TA, TCC Staff requested potential applicants indicate their interest through an online survey by September 4, 2018 to get them connected to technical assistance. Initially, there were eight (8) interested applicants. Through the initial technical

assistance process, which included working with the applicants to review eligibility and threshold requirements and defining their proposal components, four (4) applicants proceeded to submit comprehensive applications

Application Review and Scoring

All applications were evaluated through a multi-stage review process that includes: reviews by TCC Program Staff (Program Staff), Subject Matter Specialists (Specialists), and members of an Interagency Review Panel (Panel). Program Staff included staff from the SGC and the Department of Conservation (DOC). Specialists were selected to review applicant capacity, Transformative Plans, and Projects. Panel members were selected to complete a holistic review of the applications, including the quality of the overall vision and integration. Program Staff developed a scoring rubric for the implementation grants by using the scoring criteria listed in the TCC guidelines. Program Staff also developed detailed instructions on how to assign scores.

Members of the Interagency Review Panel and Program Staff conducted a site visit for each applicant. Site visits include presentations and tours by lead applicants, co-applicants, and, often, residents and other stakeholders.

TCC Program Staff Review

Completeness Check: Program Staff reviewed the submitted application materials for completeness. Applicants were notified if their application was incomplete and were given the chance to resubmit any incomplete or missing materials. All application materials – including new and updated documents – were shared with Specialists and Panel members.

Threshold Review: Program Staff conducted reviews of the program threshold requirements listed in TCC Guidelines. This included reviewing applications for eligible project areas, readiness thresholds, leverage documentation, indicator tracking plans, and workbook completeness. Program Staff did not make final point determinations, but provided recommended scores and notes to the Panel on each of the threshold requirements.

Subject Matter Specialist Review

Program Staff partnered with Specialists from various State agencies to review each application's financial and management capacity, Transformative Plans, and Projects. Specialists provided preliminary scores and questions to the Panel for review prior to the site visits. For criteria scored by multiple Specialists or Program Staff, preliminary scores were averaged; they were not weighted or normalized. Table 2 highlights the agencies who assisted in the Specialist review.

Table 2: TCC Implementation Grant Review by Subject Matter Specialists

Subject Matter Area	Agency Reviewed
Financial and Management Capacity	Department of Finance
Climate Adaptation and Resiliency	Office of Planning and Research
Community Engagement Plan	Strategic Growth Council California Environmental Protection Agency
Displacement Avoidance Plan	Department of Housing and Community Development California Environmental Protection Agency



Workforce Development and Economic Opportunities Plan	Workforce Development Board
Equitable Housing and Neighborhood Development	Department of Housing and Community Development
Active Transportation	Department of Transportation
Transit and Rail Access	Department of Transportation
Car Sharing and Mobility Enhancement	California Air Resources Board
Decarbonized Energy and Energy Efficiency	Department of Community Services and Development
Water Efficiency	State Water Resources Control Board
Urban Greening and Green Infrastructure	Department of Forestry and Fire Protection State Water Resources Control Board
Health and Well-Being	Department of Forestry and Fire Protection Department of Public Health

Interagency Review Panel

Program Staff invited reviewers from ten (10) agencies and departments to participate in the 15-member Interagency Review Panel. Each Panelist reviewed all 4 applications, as well as the reviews provided by the Threshold and Subject Matter Specialist Reviewers. A subset of Panelists attended site visits prior to deliberation. Each applicant hosted a site visit for 6-8 Panel members, as well as Program Staff and executive staff from SGC.

Panelists convened on two (2) separate days. During the Pre-Deliberation meeting, Panelists heard presentations from Specialists and Program Staff. Specialists who evaluated the Transformative Plans (Community Engagement, Displacement Avoidance, Workforce and Economic Development, and Climate Adaptation and Resiliency) and applicant capacity discussed their preliminary scores with the Panel. Program staff provided briefings on the proposed projects in each application based on the feasibility analysis and preliminary scores provided by project Specialists. During the Final Deliberation meeting, SGC staff facilitated a detailed analysis for each application to finalize the scores.

At the second Interagency Review Panel meeting, program Staff presented the estimated GHG emission reductions for each applicant, which had been provided by the application Technical Assistance providers and the California Air Resources Board.

Summary consensus scores from the Interagency Review Panel are shown in Table 3.

Table 3: Application Scores, not including GHG reduction scores

Green Together, NE Valley	SIMPL	Rooted in East Oakland	Pathways to Health
75.4	74.9	68.7	66.1

GHG Scoring

Applicants were required to identify at least three (3) projects with quantifiable GHG emission reductions that would be ready at the time of application. And, at least half of the request funding must support projects with quantifiable GHG emission reductions. Applicants can earn up to eight (8) points for the Top 3 quantifiable projects ready at the time of application and up to seven (7) for total GHG reductions from all quantifiable projects. Applicants with the highest GHG reduction received full points in each category and the others received points relative to the highest scoring applicants.

GHG scores are determined use CARB quantification methodologies. Points for Final GHG scores are shown in Table 4. Based on the estimates below, scores were allocated proportionally for each application:

Table 4: Final GHG Scores*

Applicant	Total GHG Emission Reduction Top 3 Quantifiable & Ready at Application (8 points)	Relative % (Based on top score)	Points	Total GHG Emission Reduction All Quantifiable Projects (7 points)	Relative % (Based on top score)	Points
Green Together, NE Valley	32,476	100%	8	32,630	100%	7
Rooted in East Oakland	18,837	58%	4.6	18,837	58%	4.0
SIMPL	15,597	48%	3.8	17,571	54%	3.8
Pathways to Health	11,074	34%	2.7	12,029	37%	2.6

* Final GHG scores do not include one project from the Green Together, NE Valley project list. The application included a Multifamily Feed-in-Tariff (FIT) project. Requested SGC funding would facilitate the identification of sites for future solar installations. Scorers were unable to include this project in the quantification because CARB does not have a Quantification Methodology for Feed in Tariff program and the application lacks a clear timeline or commitment around final installed capacity.

Final Application Scores

Summarized combined scores for each application are shown in Table 5.

Table 5: Summary of scores

	Green Together, NE Valley	SIMPL	Rooted in East Oakland	Pathways to Health
GHG Reduction Score	15	7.6	8.6	5.3
Interagency Score	75.4	74.9	68.7	66.1
TOTAL SCORE	90.4	82.5	77.3	71.4



Complete scores for each applicant are shown in Attachment A. Interagency Panelists were the final arbiters of determining scores for all scoring criteria, including those initially scored by Specialists and Program Staff.

Recommended Awards:

TCC Round II Implementation Grant applicants have demonstrated substantial improvements compared to TCC Round I Implementation Grant applicants. Improvements were visible in the quality of applications submitted, the community and stakeholder engagement, and the amount of leverage funding.

Given available funding, staff is recommending that the Council approve two (2) awards.

Staff would like to emphasize that each of the submitted applications are transformational and worthy of being funded, if funding were to become available. TCC will work with applicants not recommended for funding to provide feedback on areas for improvements for the next round of TCC Implementation Grant funding. Staff will also investigate connecting the applicants with other State agencies that can fund elements of the proposals. Both applicants not recommended for award received TCC planning grants in Round I. Staff is confident that the additional year of planning activities will better prepare these applicants to apply for subsequent funding rounds. Both applicants recommended for award applied to TCC in Round I.

Award Recommendation 1: Community Partners: Green Together, NE Valley

Award Amount: \$23,000,000

Leverage Funding: \$47,675,573.60

The Green Together proposal seeks to create a green, socially inclusive, and climate resilient neighborhood in Pacoima, located in the northeast San Fernando Valley. The proposal integrates decarbonized energy, urban greening, active transportation, and mobility enhancement projects, combined with equity and opportunity strategies through job training and leverage-funded displacement avoidance policies and programs. The proposal builds on the community's priorities identified through Pacoima Beautiful's decades of organizing in the NE Valley. The applicant has proposed seven projects funded by TCC and seven leverage funded projects.

The application proposes a unique model for project management that can be an example how State grants can support community-based organizations and small non-profits. Community Partners is the Lead Applicant, Grantee, and Fiscal Sponsor for the Green Together Network. Pacoima Beautiful will be co-manager for all activities related to the Green Together Resource Center and will provide ongoing coordination with the Green Together Steering Committee, Network Coordinator, and grant administrator. Pacoima Beautiful will serve as a designated Steering Committee Co-Chair for the duration of the grant performance period. The other Co-Chair will be rotated among other co-applicants.

The application demonstrated strong community and stakeholder engagement to develop a vision for transformation. The applicant has proposed legalizing Accessory Dwelling Units (ADU) as an implementation policy in the project area using leverage funds. This is an innovative way to provide housing to low-income families in areas with larger lot size characteristics.



Recommended conditions on award, in addition to general conditions listed in “Next Steps”:
Update the Memorandum of Understanding to include clauses related to assumption of liability, program reporting, and process for reporting data to evaluation team.

Award Recommendation 2: Sacramento Housing and Redevelopment Agency (SHRA): Sacramento Integrated Multimodal Place-based Living (SIMPL)

Recommended Award Amount: \$23,000,000

Leverage Funding: \$125,422,496.56

The Sacramento Housing and Redevelopment Agency proposes to transform the neighborhood surrounding the Twin Rivers Housing Project in Sacramento by constructing over 480 units of affordable and market rate housing, complete with solar panels and storm water planter boxes. The grant funds will contribute to the development of 104 of the 480 units. The project will also include the development of a new light rail station that will enable residents to travel from the Twin Rivers Housing area to downtown and other parts of the greater Sacramento area for employment and education opportunities. Trees will be planted throughout the Project Area, and a new community garden will be installed. Residents can participate in tree planting and care and will be able to obtain a plot in the community garden to grow their own food. The applicant has proposed five TCC funded projects and a comprehensive mix of leverage funded projects including a complete streets project, electric vehicles, and park and recreation equipment.

The majority of fund requested in this application will be used to build a new light rail station in the project area. The application clearly demonstrates how this station, along with other leverage funded projects, will result in comprehensive transformation of a community currently characterized by isolation, disconnection, and disinvestment, to a neighborhood of opportunity, inclusion, and integration. The significant leverage from other sources to fund projects that would complement the vision is one major strength of the proposal. The applicant has included a strong Memorandum of Understanding that clearly represents the lead applicant capability in implementing the proposed projects in timely manner.

Recommended conditions on award, in addition to general conditions listed in “Next Steps”:
Since the lead applicant has made the strong case on how building the new transit station will result in transformation, the SGC requires the applicants to:

- Include climate resiliency measures in design and construction of the transit station to assure long term continued viability, and to
- Exceed the requirement of Section 106(a)(4) of the AHSC Guidelines of “[a]t least one (1) pass or card shall be made available for each Restricted Unit for at least 3 years,” to ensure that the light rail station can be accessed and is well-utilized.

The applicants will also be required to update the MOU to expand involvement of Community Based Organizations.

Applications Not Recommended for Funding:

Oakland: Rooted in East Oakland

The Rooted in East Oakland is a transformative neighborhoods initiative that will engage the community to identify and implement equitable transformative projects. These projects propose to address climate change by reducing greenhouse gas emissions, improving public health, building individual assets, and promoting community-led economic development that will transform six East Oakland neighborhoods without displacement into sustainable, safe, healthy and vibrant places to live, work, and raise families. The 4.96 project area has a population of 43,000 residents who face many challenges, including poor traffic safety, very low tree canopy coverage (estimated at 4 percent), which contributes to poor air quality and heat island effects, high demand for affordable housing and very low housing stock. The project proposes to integrate an affordable housing development with resident-requested community services and support, and pedestrian improvements at 10 project area intersections; an urban greening project which would plant 3,000 trees throughout the project area; acquisition and expansion of a community garden which will provide access to healthy food for the community, workforce development, and education; and an innovative bike share program sited in project area libraries. These grant-requested projects, in combination with a leverage funded city-wide displacement avoidance plan, homeless services, and city-wide economic and cultural development strategies will transform the project area and the lives of community residents.

A major strength of this application was the grass-roots community involvement and the engaged support by the City of Oakland. It is clear that there are strong and cohesive partnerships between community groups, resident stakeholders, and City leadership and staff that have been well-established before the inception of the TCC Program. This foundation showed through in the proposal's strong community engagement plan, the site visit, and reviewer scores. In general, the application met the program requirements but there were areas where the application lacked detail.

Areas for improvement include:

- Demonstrating greater integration between each of the individual projects;
- Identify Leverage funded projects that contribute to the area's transformation and catalyze investment in underserved areas;
- Develop clear process on how the applicant will comply with data gathering and reporting requirements related to indicator tracking plan;
- Increase public agency partner commitment, particularly for the operations and maintenance of proposed infrastructure and ongoing community engagement;
- Provide more detailed information on projects readiness, work plan, and budgets; and
- Clarify MOU roles and responsibilities



Riverside: Pathways to Health

The Pathways to Health proposal seeks to create greater connectivity between the City of Riverside's Historic Downtown, University and Eastside neighborhoods through a series of active transportation and urban greening projects, and two affordable housing projects. The series of eight projects are designed to work together to achieve improved community health outcomes for residents of the proposed project area. The proposal builds on previous local planning initiatives and community engagement conducted as part of the Riverside Healthy Eating Active Living (HEAL) Zone, which overlaps with the project area. Over 250 residents participated in 14 community meetings and two neighborhood walks to inform and prioritize the projects included in the TCC Proposal. Panel members who attended the Riverside site visit, were impressed with the community leaders and organizations engaged in the HEAL Zone and by the improvements they have already achieved in the Eastside neighborhood.

Areas for improvement include:

- Demonstrating greater integration between each of the individual projects;
- Provide more detailed information on project readiness and budgets;
- Providing more formal and clear roles for decision-making by community leaders; and
- More clearly delineating how the County Economic Development Agency as the Lead Applicant would work with the City of Riverside during implementation.

Next Steps

Following a decision by the Council on the awards, Program Staff will enter into Post-award Consultation phase with award recipients to refine the grant agreement and all accompanying attachments to comply with administrative, statutory, and TCC Program requirements. Awarded applications will be subject to review and required to make modifications to align with program requirements, Interagency Review Panel recommendations, and Council direction. Award recipients must work with an Evaluation Technical Assistance provider contracted by the State to finalize an Indicator Tracking Plan for the proposal.

The Interagency Review Panel and Program Staff identified the following areas of improvement to address during post-award consultation: climate resiliency of proposed infrastructure, project readiness, collaborative stakeholder structure governance, displacement avoidance strategies, and workforce development strategies. Program Staff may identify additional areas of improvement that award recipients need to address during Post-award Consultation. Program Staff will also conduct a review of eligible activities and costs, and award recipients will be required to submit supporting documentation and refine project materials.

Award recipients are not permitted to develop new projects during Post-award Consultation, per the TCC Program Guidelines. Any project modifications will be subject to the TCC Post-Award Review Policies.

Key Considerations for Future TCC Funding Rounds

TCC Program Staff and the program's steering committee members comprised of partner agencies have identified areas listed below for further improvement of the program in future:

Provide Clarity on Workforce Development Requirements

Round I and II applications demonstrates that applicants needs additional clarity and direction on workforce development requirements. All applications lacked a clear strategic plan for place-



based workforce development aligned with regional goals. New updates to the TCC Guidelines should encourage applicants to explore how TCC funds can result in identifying innovative approaches to workforce development that would address workforce needs of the Project Area residents.

Catalyze Creative Approaches to Affordable Housing

The Green Together, NE Valley application provides an example of how TCC can support creative approaches to addressing affordable housing in contexts where developing large-scale affordable housing projects is not feasible. SGC will continue to explore options to support more innovative approaches to address housing needs such as small-scale infill affordable housing and improvement or building accessory dwelling units.

Supporting Arts and Culture

Art and culture plays an integral role building cohesive communities. SGC staff would like to provide more guidance on how TCC applicants can include arts and culture as a strategy for transformation.

Displacement Avoidance

The TCC Guidelines need to clarify the definition of “new policies” that applicants need to pursue to avoid displacement. Clarity is also needed on how non-governmental lead applicants can fulfill displacement avoidance requirements given limited authority over policy adoption and implementation.

Climate Adaptation and Resiliency

The TCC Guidelines need to clarify how climate adaptation and resiliency should factor into not only the selection, design, and implementation of projects, but also the long-term operation and maintenance such as the effects of extreme precipitation or heat events on functionality of equipment.

Expanding Eligibility for Future Rounds

TCC Round I and II limited implementation grants eligibility to projects in a planning area comprised of majority top 5% Census Tracts per CalEnviroScreen 3.0. With sufficient funding, SGC staff recommends broadening the eligibility to provide opportunity for other communities to apply for TCC including TCC Planning Grants awardees.

In addition, under the current TCC Guidelines, only incorporated areas are eligible for TCC grants. The staff will explore broadening the eligibility to include unincorporated areas for the future round.

Supporting Applicants for Cost of Application

SGC recognizes that preparing a TCC application requires significant investment from the lead applicants and partners. SGC will explore the ways in which applicants can be reimbursed for cost of application, especially for the cost associated with the site visit during the review process.

Staff Report Attachments

Attachment 1: Implementation Grant Scores

Attachment 2: Application Summaries and Project Area Maps



Attachment A: Implementation Grant Scores

The scores reflects the average of scores provided by reviewers.

FINAL DELIBERATION - SCORES	Rooted in East Oakland	Green Together: NE Valley	Pathways to Health	SIMPL
	77.3	90.4	71.4	82.5
I. Transformative Plan: Program Objectives	Score Assigned	Score Assigned	Score Assigned	Score Assigned
A. Greenhouse Gas Emission Reductions				
1. GHG Emission reduction estimates of top three (3) CCI Project Types that meet readiness requirements at time of Application submittal.	4.6	8	2.7	3.8
2. GHG Emission reduction estimates for all CCI Project Types that meet readiness requirements within 1-year timeframe.	4	7	2.6	3.8
B. Objectives, Vision, Strategies				
1. Applicant defined Vision Statement is specific, measurable and achievable in timeframe and reflects the needs of the Project Area identified through the community engagement process.	2.6	2.8	2.4	2.6
2. Strategies selected will achieve the Vision identified for the TCC Project Area.	2.5	2.9	2.7	2.6
3. Projects are integrated to maximize benefits to the TCC Project Area and to meet the TCC Program Objectives.				
4. Proposed Projects demonstrate they provide benefits to priority populations as defined by CARB Priority Population Benefit Criteria Tables.	4.7	5.6	4.3	5.1

FINAL DELIBERATION - SCORES	Rooted in East Oakland	Green Together: NE Valley	Pathways to Health	SIMPL
5. Proposal includes Leverage-Funded Projects that are innovative and reduce GHGs, achieve public health and environmental benefits, and expand economic opportunity and shared prosperity.	1.7	2.7	2.2	2.7
II. Transformative Requirements	Score Assigned	Score Assigned	Score Assigned	Score Assigned
A. Indicator Tracking				
1. Lead Applicant and partners are adequately able to track and monitor CARB-required Project Indicators and TCC program-wide indicators in their work plans and budgets.	2	5	4	5
B. Displacement Avoidance Plan (DAP)				
1. Includes comprehensive description of displacement vulnerability among existing households and small businesses.	1	0.5	1	0.5
2. Proposal seeks to implement new policies to avoid displacement that align with risks identified in vulnerability assessment.	2	1.5	1	1.5
3. Applicant has selected at least one (1) policy from at least three (3) of the policy categories listed in Table 2 to pursue to avoid displacement of existing households.	0.7	1	0.5	0.7
4. Applicant has selected at least two (2) additional policies from either of the policy categories listed in Table 3 to pursue to protect small businesses from displacement.	1	1	0.5	1
C. Community Engagement Plan (CEP)				

FINAL DELIBERATION - SCORES	Rooted in East Oakland	Green Together: NE Valley	Pathways to Health	SIMPL
1. CEP presents clear plan used to identify needs of residents and key stakeholders from Project Area.	2	3	1.5	2.5
2. Community Engagement:	2	2	1.5	2
a. Residents and key stakeholders were involved in the development and selection of Projects Types included in the Proposal;				
b. Describe any long-term sustained community engagement activities used to support community transformation around climate issues.				
3. Provide detailed description and timeline of community engagement activities used for proposal development and proposed for project implementation.	2	1.5	1.5	2
4. Applicants utilized at least three (3) of the recommended activities to inform community stakeholders about the TCC proposal development process and to solicit community stakeholder input.	1	1	1	1
5. Applicants utilized at least two (2) of the following activities to actively engage community stakeholders in proposal development.	1	1	1	1
6. Applicants propose to utilize at least four (4) of the following activities to actively engagement community stakeholders during implementation of TCC Plan.	1	1	1	1
D. Climate Adaptation and Resiliency				
1. Identify the climate change risks and exposures within the Project Area.	1	1	1	1
2. Analyze the impact of climate change risks and exposures on the community.	1	1	1	1

FINAL DELIBERATION - SCORES	Rooted in East Oakland	Green Together: NE Valley	Pathways to Health	SIMPL
3. Analyze the impact of climate change risks and exposures on the built environment.	1	1	1	1
4. Process to identify and prioritize adaptation measures for addressing risks on vulnerable population.	1	1	1	1
5. Process to identify and prioritize adaptation measures to increase resiliency of proposed infrastructure projects.	0.5	0.5	0.5	0.5
E. Workforce Development and Economic Opportunities				
1. Explain how the Workforce and Economic Development Plan will fund training that leads to career pathways and high-quality jobs for residents of the Project Area and individuals with employment barriers.	2	3	2	2
2. Explain how the Workforce and Economic Development Plan will lead to the creation of high-quality jobs for residents of the Project Area and individuals with employment barriers in industries related to the TCC Projects.	1	1	1	1
II. Capacity to Implement	Score Assigned	Score Assigned	Score Assigned	Score Assigned
A. Financial				
1. Lead Applicant and Co-applicants demonstrate the experience, financial stability and capacity to manage program funds from multiple sources.	3.5	3.8	3.5	3.7
2. Applicant demonstrates stable funding sources to meet match requirement from more than one (1) source.	1	1	1	1

FINAL DELIBERATION - SCORES	Rooted in East Oakland	Green Together: NE Valley	Pathways to Health	SIMPL
3. The Project achieves leverage funding beyond the fifty percent (50%) match requirement.	1	1	1	1
4. The proposed budget clearly shows how the grant funds will be spent. Costs are reasonable in proportion to the proposed deliverables. The budget demonstrates the distinction between funding for Project Types and activities ineligible for funding under CARB's Funding Guidelines .	3.2	2.8	3.1	3.3
B. Management and Organization				
1. Lead Applicant demonstrates organizational capacity to implement TCC Proposal, has experience managing similar programs, and has the ability to manage long-term grant implementation.	1.3	1.5	1.3	2
2. Co-applicants demonstrate organizational capacity to support Lead Applicant in implementation of TCC Proposal.	2.6	2.8	2.5	2.8
3. Public agency partner demonstrates a strong commitment to support the implementation of projects and policies included in the TCC Proposal.	1.7	1.7	1.7	1.9
4. Work plans are integrated to ensure overall implementation of TCC Plan will be completed during the grant term.	2.8	2.6	2.5	2.8
C. Collaborative Stakeholder Structure				

FINAL DELIBERATION - SCORES	Rooted in East Oakland	Green Together: NE Valley	Pathways to Health	SIMPL
<p>1. Lead Applicant and Co-applicants have established work history, sustained community engagement around climate change, and/or experience working with one or more of the following areas: disadvantaged communities, housing and community development, economic development, environmental, and public health issues.</p>	1.9	2	1.8	1.7



FINAL DELIBERATION - SCORES	Rooted in East Oakland	Green Together: NE Valley	Pathways to Health	SIMPL
<p>2. Collaborative Stakeholder Structure is comprised of a diverse representation of residents and key stakeholders (i.e. labor unions, nonprofits, faith-based groups, community based organizations, academics, economic development institutions, workforce development groups, businesses, representatives from local School District, Community College District, and others).</p>				
<p>3. A signed Memorandum of Understanding for the Collaborative Stakeholder Structure that lays out clear roles, responsibilities and relationships among the Partners; transparent decision-making processes; a plan for accountability; and for engaging Project Area residents and key stakeholders. The complete list of components to include in the Memorandum of Understanding is included in Section II.A.2 of the Transformative Climate Communities Program Guidelines.</p>	4.5	5.1	4.1	5
<p>4. The Community Engagement Plan discusses how Applicants propose to inform the public of implementation progress and updates on program implementation.</p>	1.6	2	1.3	1.7
<p>II. Projects Assessment</p>	Score Assigned	Score Assigned	Score Assigned	Score Assigned
<p>1. Proposed Projects address the needs of the TCC Project Area identified in the community engagement plan.</p>	1	1	1	1

FINAL DELIBERATION - SCORES	Rooted in East Oakland	Green Together: NE Valley	Pathways to Health	SIMPL
2. Readiness documentation demonstrates that readiness can be met at the time of application submittal or within one (1) year (e.g. site control, CEQA, permits).	1.6	1.9	1.7	1.8
3. Project designs demonstrate quality, feasibility, integration, and compliance with existing infrastructure and plans.	1.9	1.6	1.7	2
4. Project budgets are financially feasible.	0.9	0.9	1	1
5. Project work plans include clear timelines, discrete tasks, and detailed deliverables. Lead entities demonstrate a feasible plan to complete implementation within the grant term.	1.6	1.4	1.7	1.7
6. Projects identify a feasible long-term operations and maintenance plan for during and beyond the grant term.	1	0.7	0.9	0.9
7. Projects identify potential negative impacts of the projects and propose mitigation strategies.	0.9	0.6	0.7	0.9

Attachment 2

Application Summaries and Project Area Maps

This page is left intentionally blank.

Rooted in East Oakland: Implementation Grant Application Summary

Project Title: Rooted in East Oakland

Lead Applicant: City of Oakland

Co-Applicants: Related CA/ACTS Community Development, Urban Releaf, Planting Justice, Scrapper Bike Team/East Bay Bicycle Coalition, Oakland Climate Action Coalition/Social Environmental Entrepreneurs

Grant Funds Requested: \$23,000,000

Leverage Funding: \$508,955,766

Project Area Size: 4.96 sq. mi.

Project Description: The project proposes to integrate an affordable housing development with community services and pedestrian improvements at 10 Project Area intersections, an urban greening project, a community garden, and a bike share program, in combination with leverage funded city-wide displacement avoidance plan, homeless services, and city-wide economic and cultural development strategies.

Project Area Population & Demographics: Six-neighborhood Project Area has a total population of 46,000. The current ethnic breakdown is approximately 45% African American and 35% Latino, with significant shifts occurring over the last 10 years resulting in a higher percentage of Latinos and lower percentage of African Americans.

TCC Funded Projects:

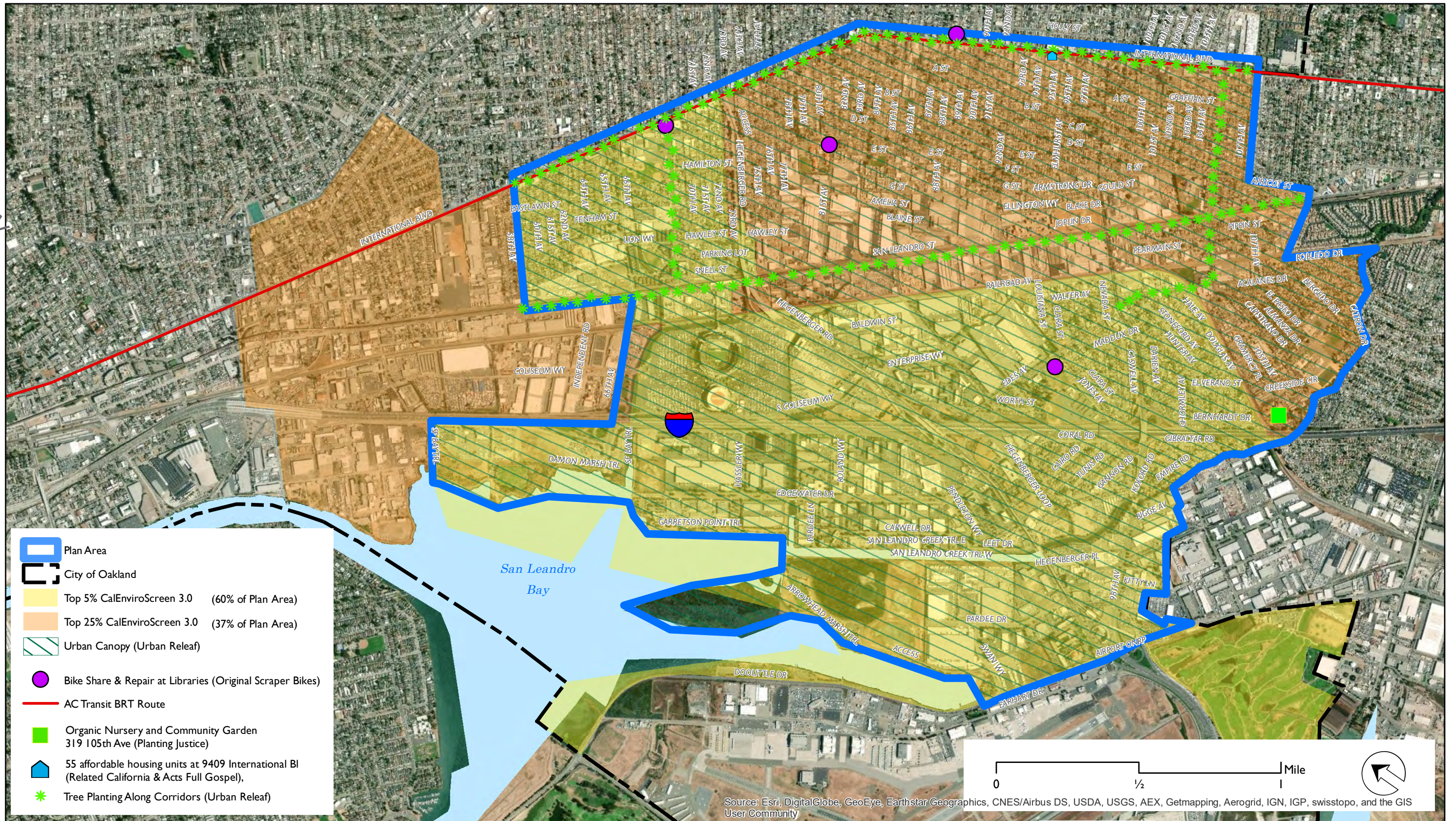
- 1) International Blvd. Affordable Housing & Walkability Project (Equitable Housing) Quantifiable
The project, led by Related CA/ACTs Development Community Development includes the 95th and International Affordable Housing is new construction of 55 affordable housing units on 0.74 acres. Other elements include housing-related infrastructure for water and electrical utility connections; and pedestrian improvements near the housing site which consist of ADA curb ramps at 10 intersections (40 ADA curb ramps total), and landscaped traffic calming circles at 4 intersections.
- 2) Trees Anchoring Health (Health and Well-Being) Quantifiable
The project, led by Planting Justice, will acquire and expand an organic commercial nursery and community garden that not only provides food and urban agricultural education to people who lack access to enough healthy food, but also serves as a center for art, culture, and healing that flexibly responds to present and historical traumas in ways that break the cycles of violence and mass incarceration.
- 3) Urban Releaf (Urban Greening and Green Infrastructure) Quantifiable
Urban Releaf proposes to plant 3,000 trees along major corridors to reduce greenhouse gas emissions and capture carbon.
- 4) Scrapper Bike Share Program (Transit Access & Mobility, Active Transportation) Non Quantifiable
Scrapper Bike Share Program, led by the Scrapper Bike Team, is hosted by five libraries in the TCC Planning Area with repair kiosks and space for up to 12 bicycle that can be borrowed by anyone with an Oakland Public Library card.

Leverage Projects: None identified. Lists that leverage will fund leverage-funded city-wide displacement avoidance plan, homeless services, and city-wide economic and cultural development strategies.

Community Engagement: The Rooted in East Oakland Community Engagement Plan (CEP) is a preliminary plan that will be reviewed, refined, and adopted in a democratic and equitable process by a representative council ("Council") of Project Applicants and other community stakeholders rooted in East Oakland, such as members organizations of the East Oakland Congress of Neighborhoods. The Council will use a Participatory Budgeting process to develop the final CEP Budget.

Workforce Development: The Workforce Development Plan proposes an array of activities to support the targeted communities, including the siting of local career development and education/training programs, and linkages to local organizations/projects (and private-sector businesses) offering economic and employment opportunities. The Peralta Community College District will bolster this investment through an array of career technical education programs in growing high-wage industries and occupations.

Displacement Avoidance: For residents, the Displacement Avoidance Plan includes new affordable housing construction, preservation of existing units through the East Bay Asian Local Development Corporation (EBALDC) Housing Acquisition Fund and City of Oakland Measure KK, increased service awareness (e.g. financial assistance and tenants' rights outreach) and strengthening City policies such as rent control and just cause. For businesses, the Plan includes investing in East Oakland-based organizations and businesses to grow capacity, outreach and assistance to mitigate construction impacts of the Bus Rapid Transit (BRT) along International Boulevard, and increasing services to Project Area businesses.



Rooted In East Oakland - A Transformative Neighborhoods Initiative

Transformative Climate Communities 2018



Green Together: NE Valley Implementation Grant Application Summary

Project Title: Green Together: NE Valley

Lead Applicant: Community Partners

Co-Applicants: The Trust for Public Land, Pacoima Beautiful, GRID Alternatives LA, Los Angeles Business Council, Los Angeles Conservation Corps, Los Angeles Clean Tech Incubator, City of Los Angeles Department of Transportation, City of Los Angeles Bureau of Street Sanitation

Grant Funds Requested: \$23,000,000.00

Leverage Funding: \$47,675,573.60

Project Area Size: 4.36 sq. mi.

Project Description: The project seeks to create a green, socially inclusive, and climate resilient neighborhood in the northeast San Fernando Valley. The proposal integrates decarbonized energy, urban greening, active transportation, and mobility enhancements projects, in combination with equity and opportunity strategies through job training and leverage-funded displacement avoidance policies and programs.

Project Area Population & Demographics: The proposed Project Area includes the neighborhoods of central Pacoima and a portion of northern Sun Valley in the northeast San Fernando Valley with a population of 51,251. The entire Project Area is low-income as defined by AB1550, with a mean household income of \$49,519 and median household income of \$51,771.

TCC Funded Projects:

- 1) Pedestrian Mobility Improvements (Active Transportation) Quantifiable
The project, led by The Trust for Public Land, will install pedestrian improvements along 2.4 miles of streets. Improvements include 900 feet of new sidewalks, ADA ramps, bicycle sharrows, and high visibility crosswalks on Herrick Avenue and Haddon Avenue.
- 2) Pacoima Dash E-Bus (Transit and Rail Access) Quantifiable
The Los Angeles Department of Transportation will electrify the DASH Pacoima service with 14 new battery-electric buses and 7 electric chargers. A new bus route will intersect with the Metro line, planned mobility hubs, and pedestrian improvement areas.
- 3) EV Charging Stations (Car Sharing) Non-Quantifiable
The project, led by The Trust for Public Land, will implement solar-powered EV charging infrastructure within the 4 mobility hubs proposed under project #1. The project will also implement 5 air quality monitoring nodes at key locations in Project Area, and at least 1 within a mobility hub as an interactive public art element.
- 4) Single-Family Solar Installations (Decarbonized Energy) Quantifiable
GRID Alternatives and project partners will establish the Green Together Resource Center and develop an outreach strategy to enroll and install 175 solar electric energy systems. GRID will also consult with workforce partners Los Angeles Conservation Corps and the Los Angeles Business Council to develop and implement the Workforce Development Innovation Program.

- 5) Multi-Family FiT Installations (Decarbonized Energy) Quantifiable
The Los Angeles Business Council will identify available project sites and implement an outreach strategy to contract 8 Mega Watts of Feed-In Tariffs (FiT) and/or FiT/net energy metering (NEM) projects. The project will host workshops to connect local building owners with solar developers, financiers, and Los Angeles Department of Water and Power.
- 6) David M. Gonzales Park Renovation (Urban Greening) Quantifiable
The project, led by The Trust for Public Land, will renovate an existing 6.8-acre park. The project will plant 95 trees, install a small stormwater bioswale and learning garden, and install walking paths for older residents at the park.
- 7) Street Tree Planting (Urban Greening) Quantifiable
The project, led by the Los Angeles Conservation Corps, will plant 2,000 trees in the Project Area, focusing on shade for commercial and residential properties.

Leverage Projects:

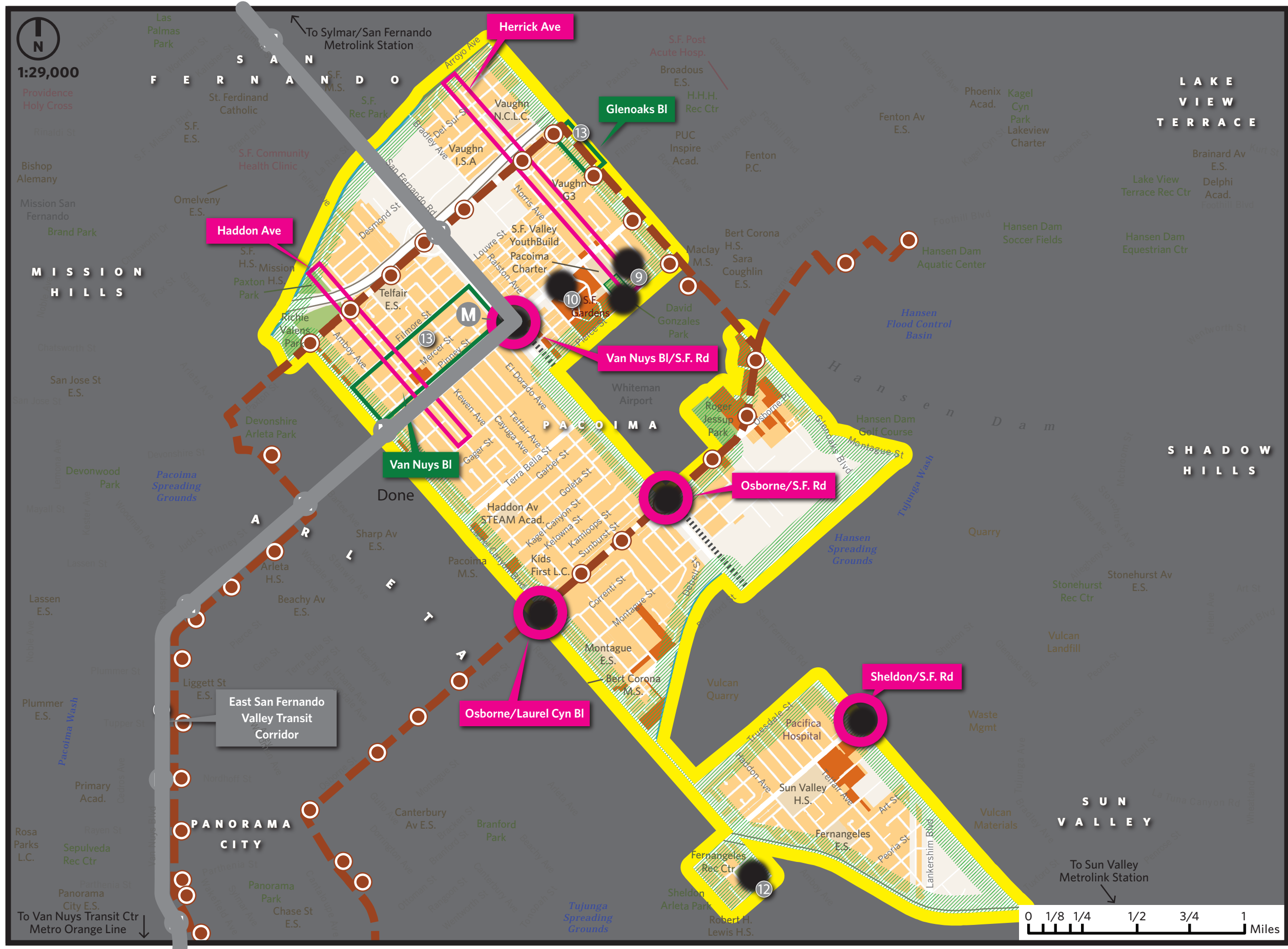
- 1) Cool Roof Retrofits
GRID Alternatives will identify roofing subcontracts to install 35 cool roofs over a 3-year period for the purpose of installing rooftop solar photovoltaic systems.
- 2) Community Resiliency Center
The project, led by GRID Alternatives, will construct a resiliency center at David M. Gonzales Park, which will include solar and energy storage and electric vehicle service equipment.
- 3) Bradley Green Alley and Plaza Renovation
The project, led by The Trust for Public Land, will transform 0.36 acres of alley space into a green alley with stormwater infiltration features (up to 5 acre-feet per year).
- 4) East San Fernando Valley Transit Corridor
The Los Angeles County Metropolitan Transportation Authority will plan and design a new light rail transit service along Van Nuys Boulevard and San Fernando Road corridors, serving the eastern San Fernando Valley with 3 proposed stations in the TCC Project Area.
- 5) Fernangeles Park Stormwater Capture
The project, led by the Los Angeles Department of Water and Power, will install a 1.6-acre underground infiltration gallery in Fernangeles Park that will capture and infiltrate stormwater with the goal of supplementing water supply for the City of Los Angeles.
- 6) Van Nuys Boulevard and Glenoaks Green Street Projects
The project, led by the Los Angeles Bureau of Sanitation, will install stormwater infrastructure at various locations around the Pacoima neighborhood. The project will capture stormwater and urban runoff from a combined 100-acre watershed, infiltrate the captured water into the ground, and capture an average of 95 acre-feet per year.
- 7) Transportation Advising
The Los Angeles Cleantech Incubator (LACI) will host Transportation Electrification Partnership (TEP) Working Group Meetings with partners to conduct further analysis of greenhouse gas emissions and regional air pollution in the Northeast Valley. LACI will also host monthly one-on-one Mobility Advisory Sessions with Pacoima Beautiful.

Community Engagement: Pacoima Beautiful and the Green Together team will open a Green Together Resource Center, which will serve as an outreach and communications center for the TCC community engagement and workforce development plans. The Resource Center, project website, and quarterly forums will have up-to-date information and solicit feedback. The Resource Center will create bilingual outreach materials, hire an outreach team, organize charrettes for each major program

and project, and organize at least 25 community meetings per year. The outreach team will focus on providing opportunities for residents to learn about the TCC project, provide input, and become involved in project implementation. Door-to-door outreach will be a central part of the engagement and be used to inform residents about solar systems, street tree plantings, and other projects.

Workforce Development: The Green Together Resource Center will serve as a recruitment and outreach center for the project's Workforce Development Innovation Program (WDIP). The program will focus on job training, placement into permanent jobs or pre-apprenticeship programs, and post placement follow-up. The program will coordinate with Pacoima Beautiful's door-to-door and other outreach activities plan to identify workforce partners, job training programs, and eligible applicants for the workforce program. The Los Angeles Conservation Corps and GRID Alternatives will also provide outreach and support to ensure an inclusive training process, access to career pathways, and equitable entry into construction and solar industries.

Displacement Avoidance: The plan will develop a Community Land Trust feasibility study and guidelines for legalizing Accessory Dwelling Units, long-term strategies for protecting and increasing the affordable housing stock. The plan will implement a Tenant Protection Support Program that will provide legal resources and tenants' rights workshops, a short-term strategy for immediate protection of existing vulnerable households. To address the displacement of small business, the plan will host annual workshops to increase the visibility of the existing One-Stop Business Source Center and Clean-up Green Up funding opportunities, host annual commercial tenant protection rights workshops, and develop a technical assistance workshop for the local artist community.



Active Transportation & Mobility Enhancements

- 1) Pedestrian Mobility Improvements**
- Neighborhood Mobility Hubs (TPL)
 - Herrick & Haddon Ave Pedestrian Safety Improvements (TPL)

Transit and Rail Access

- 2) Pacoima DASH – E-Bus Proposed Route & Stop (LADOT - New Service)**

Car Sharing and Mobility Enhancement

- 3) EV Charging Stations (TPL)**

Energy Efficiency, Energy Conservation & Renewable Energy

- 4) SF Solar Installations (GRID)**
(All Single-family Parcels)
- 5) MF FiT Installations - Eligible Parcel (LABC)**
(All Multi-family Parcels)

Urban Greening and Green Infrastructure

- 6) David M. Gonzales Park Renovation (TPL)**
- 7) Street Tree Planting (LACC) (Project Area-wide)**

Leverage Only Projects

- 9) Cool Roof Retrofits - All Single-family Parcels (GRID)
- 9) Community Resiliency Center (GRID)
- 10) Bradley Ave Green Alley & Plaza Renovation (TPL)
- 11) East San Fernando Valley Transit Corridor (LA Metro)
- 12) Fernangeles Park Stormwater Capture (LADWP)
- 13) Green Streets (LASAN)
- 14) Transportation Advising - Not Shown (LACI)

MAP FEATURES

- Project Area
- City of Los Angeles
- Unincorporated/Other Cities
- Railway (Metrolink & Freight)
- Landfill/Quarry
- School Campus
- Medical
- Park/Open Space
- Flood Control Channel/Stream
- Lake/Reservoir
- Spreading Grounds

Riverside TCC Implementation Grant Application Summary

Project Title: Pathways to Health

Lead Applicant: Riverside County Economic Development Agency

Co-Applicants: City of Riverside, Wakeland Housing Development Corporation, Grid Alternatives, Santa Ana Watershed Project Authority, Riverside Community Health Foundation, Riverside Unified School District, Riverside Transit Agency

Grant Funds Requested: \$23,000,000

Leverage Funding: \$31,236,534

Project Area Size: 3.04 sq. mi.

Project Description: The project seeks to enhance connectivity between the Downtown Riverside and the University and Eastside neighborhoods through a series of projects designed to improve health and environment. The Eastside neighborhood is one of the oldest neighborhood which has a long history of economic, environmental and public health challenges. Proposal builds upon community outreach conducted through the Riverside Healthy Eating Active Living (HEAL) zone which is located in the Eastside neighborhood. The proposal also builds upon previous planning efforts such as the Chicago-Linden Neighborhood Plan and Riverside Restorative Growth Print.

Project Area Population & Demographics: The proposed Project Area encompasses Historic Downtown, Eastside and University neighborhoods with a total population of 35,894. A majority of the Project Area residents are Latino (60%) followed by whites (16%), African-American (11%) Asian (8%) residents who identify as other (6%).

TCC Funded Projects:

- 1) Mission Heritage Plaza (Equitable Housing) Quantifiable
Affordable Housing Complex in Downtown Riverside with 72 affordable rental units, community meeting spaces, headquarters for the Fair Housing Council of Riverside County, and home of Civil Rights Institute of Inland Southern California.
- 2) Eastside Mode Shift (Active Transportation) Quantifiable
Construction of Class II and Class III bike lanes, conversion of dirt alleys into paved Art Alleys, expansion of City Bike Share Program into Eastside with 5 new stations, and 2,200 linear feet of side walk along Dwight Avenue to improve pedestrian and cyclist mobility, access and safety.
- 3) Bus Passes (Transit and Rail Access) Quantifiable
Free bus passes for individuals in low-income households within the Project Area receiving services under the Workforce Development and Economic Opportunities Plan. Expect to purchase 1,750 monthly passes over grant term for approximately 700 residents and estimate purchase of 10,800 daily passes for 2,160 project area residents.
- 4) Energy for All (Decarbonized Energy) Quantifiable
Installation of 90 kW-DC of rooftop solar for approximately 25 low-income households through third-party ownership model (pre-paid Power Purchase Agreement) and provide approximately 4 cool roofs as needed. Will focus outreach and installation to homes located in Eastside neighborhood.

- | | | | |
|----|--|-------------------------|------------------|
| 5) | WECAN Water Heaters
Replacement of inefficient water heaters with high-efficiency water heaters and water blankets to be installed in approximately 40 homes of eligible low-income residents. | (Decarbonized Energy) | Non-Quantifiable |
| 6) | WECAN Water Efficiency
Direct installation of high-efficiency/low-flow indoor fixture replacement and turf replacement for eligible –low-income residents at no cost to provide water and energy savings. Fixture replacements will be installed in approximate 50-70 homes. Approximately 70-80 homes will have high-water use turf removed and replaced with drought tolerant plants. | (Water Efficiency) | Quantifiable |
| 7) | Green Pathways Tree Planting
City of Riverside will work with Riverside County Economic Development Department and volunteers from community groups to plant 500 trees within the Project Area. A majority of the trees (80%) will be within 60 feet of a building, and 15% will be planted on the south side of buildings to further optimize shade. | (Urban Greening) | Quantifiable |
| 8) | North High School Garden
A sustainable community garden with orchard will be planted on campus of North High School in project area. Students will be encouraged to engage in garden through accompanying curriculum focused on food cycle, entrepreneurial skills, problem solving and analytical skills. | (Health and Well Being) | Non-Quantifiable |

Leverage Projects:

- 1) **Entrada Affordable Housing**
Mixed-use housing project with approximate 65 affordable units that will revitalize and enhance Chicago-Linden area of the Eastside Neighborhood with community serving space that will serve as office space for Riverside Community Health Foundation and a demonstration kitchen.
- 2) **Vine Street Mobility Hub**
Regional multi-modal transportation hub supporting interagency connectivity. Located across the street from existing Metrolink station in Downtown Riverside.

Community Engagement: City of Riverside Neighborhood Engagement Office along with the Riverside Community Health Foundation engage residents of Project Area using four main strategies: surveys and questionnaires, stakeholder focus groups, symposiums and a Steering Committee comprised of graduates of the Eastside Resident Leadership Academy. Over 250 residents attended 14 meetings and 2 neighborhood walks to help identify the projects included in the TCC Proposal. The City will also appoint 1 representative of the following groups to serve on Advisory Committee to oversee TCC Plan implementation: Community residents from Chicago-Linden and Mission-Heritage, member of the Eastside Forum, Participant or Graduate of the Resident Leadership Academy and a member of the Eastside HEAL Zone.

Workforce Development: Focused on training approximately 24 Project Area residents for careers in solar installation and NABCEP certification through Riverside City College. Participants will have access to supportive services through the Workforce Development Center. Additionally, propose Next GEN farmer training program. Workforce Development Center will also provide additional services to residents of the proposed Project Area.

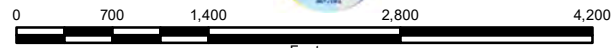
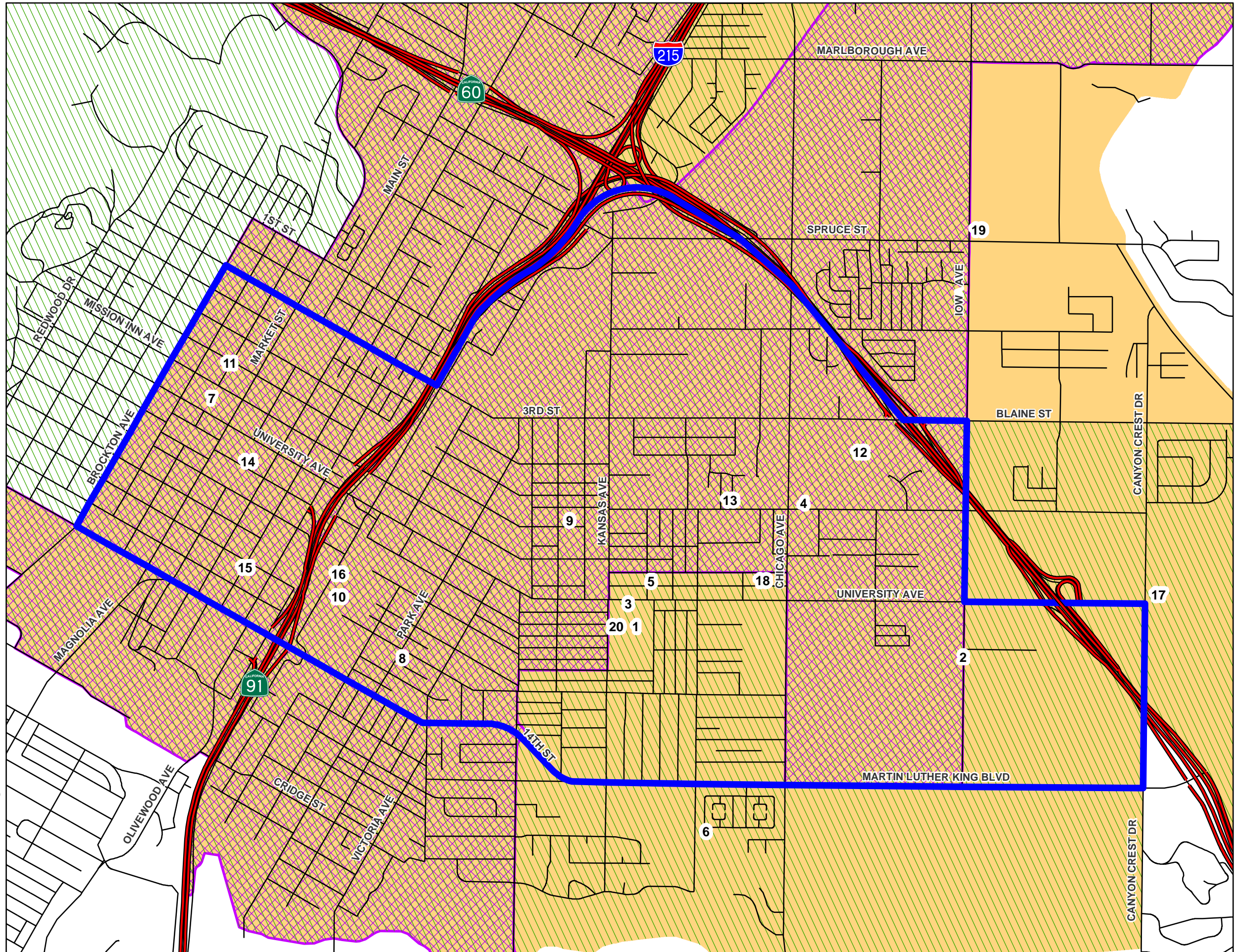
Displacement Avoidance Plan: Based on recently adopted measures by the City of Riverside to preserve and prevent displacement of affordable housing units. Includes requirement for one-to-one replacement of low and very low income housing for new development on sites that previously provided affordable rental units. Other policies are: City Density Bonus, Mobile Home Parks Rent Stabilization, and partnerships with the Fair Housing Council of Riverside County and Legal Aid of Riverside to support implementation of fair housing policies, as well as education and supportive services to residents.

Pathways to Health Project Area Map



- Highways
- Project Area
- Top 25 Percent Disadvantaged Community
- Top 5 Percent Disadvantaged Community
- AB1550 Low Income Community

1. Bobby Bonds Park
2. CARB (future site)
3. Cesar Chavez Community Center
4. Entrada Housing Project
5. Community Market (La Tapatia)
6. Emerson Elementary School
7. Library (future site)
8. Lincoln Park
9. Longfellow Elementary School
10. Metrolink Station (Downtown)
11. Mission Heritage Housing Project
12. North High School
13. Patterson Park
14. Riverside City Hall
15. RCHF Eastside Health Clinic
16. RTA Mobility Hub (future site)
17. University of California, Riverside
18. Walgreens Pharmacy
19. Workforce Development Center
20. Youth Opportunity Center



October 26, 2018

Disclaimer: Maps and data are to be used for reference purposes only. Map features are approximate, and are not necessarily accurate to surveying or engineering standards. The County of Riverside makes no warranty or guarantee as to the content (the source is often third party), accuracy, timeliness, or completeness of any of the data provided, and assumes no legal responsibility for the information contained on this map. Any use of this product with respect to accuracy and precision shall be the sole responsibility of the user.

Source : County of Riverside
 Author : Vinnie Nguyen
 rcit-Project/EDA/TCCGrand/TCCGrand/PathwaysToHealthMap.mxd

Sacramento TCC Implementation Grant Application Summary

Project Title: SIMPL: Sacramento Integrated Multi-Modal Place-Based Living

Lead Applicant: Sacramento Housing and Redevelopment Agency

Co-Applicants: Sacramento Tree Foundation, Sacramento Regional Transit District, McCormack Baron Salazar, Urban Strategies Inc.

Grant Funds Requested: \$22,999,999.65

Leverage Funding: \$125,422,496.59

Project Area Size: 2.77 miles

Project Description: The Sacramento Housing and Redevelopment Agency proposes to transform the neighborhood surrounding the Twin Rivers Housing Project in Sacramento by constructing over 480 units of affordable and market rate housing complete with solar panels and stormwater planter boxes. The grant funds will contribute to the development of 104 of the 480 units. The project will also include the development of a new light rail station that will enable residents to leave the Twin Rivers Housing area and commute downtown and to other parts of the greater Sacramento area for employment and education opportunities. Trees will be planted throughout the Project Area, and a new community garden will be installed. Residents can participate in tree planting and care and will be able to obtain a plot in the community garden to grow their own food.

Project Area Population & Demographics: There are 10,428 residents in the Project Area. Roughly 23% of the residents are Latinx and 16% are African American. Only 15% of the Project Area residents have high school diplomas. Household median income is \$26,175. There is also a sizable homeless, predominantly minority population in the Project Area.

TCC Funded Projects:

- 1) Twin Rivers Housing Development (Equitable Housing) Quantifiable
Construction of 104 multi-family, mixed-income housing units in eight buildings at the Twin Rivers housing site. Transit vouchers distributed (1 per household).
- 2) Dos Rios Light Rail Station (Transit and Rail Access) Quantifiable
Development of a new light rail station across the street from the Twin Rivers public housing project, which will also include a mobility hub with a bike share and electric vehicle car share. Provides 150 student transit vouchers to encourage ridership.
- 3) Solar Panels on Public Housing (Decarbonized Energy) Quantifiable
Solar panel system to be installed on newly developed Twin Rivers housing project, to create 143 kilowatts of power and offset more than 50% of common area utility usage. System will include roof top panels and car port locations. GRID Alternatives will conduct job training for 12 participants.
- 4) Tree Planting (Urban Greening) Quantifiable
Planting of 380 trees throughout the Project Area. Sacramento Tree Foundation will coordinate community planning activities, and Sacramento Conservation Corps will perform tree monitoring and care.

- 5) Community Garden (Health and Well-Being) Quantifiable
Construction of a 25,000 ft² community garden at the Twin Rivers housing site, which will include 8 orchard trees and 40-50 plots for residents to grow their own produce. Alchemist Certified Development Corporation will conduct outreach and organize resident participation.

Leverage Projects:

- A total of \$125,422,296 in leverage funded projects
- Comprehensive mix of projects, including:
 - Complete streets: bicycle and pedestrian improvements, traffic calming elements, streetscape improvements, pedestrian crossings
 - Electric vehicles: Electric car share with new charging stations and electric vehicles
 - Park and recreational equipment: New community park and outdoor recreational equipment

Community Engagement: Community events will include public meetings, festivals, and open houses at the public housing sites. Communications strategies and messaging will be tailored to best reach the community, such as direct mail, printed materials, digital materials, surveys and 1:1 community organizing.

Upon receiving the award, the Community Engagement lead will convene a work group and conduct outreach to solicit Resident and Stakeholder Leadership Council members. Monthly meetings will occur during the first six months of the initiative to develop protocols for the Community Engagement working group and launch CE tasks such as a digital presence, meeting responsibilities and schedules. Meetings will become quarterly after the first six months. Community Engagement plans will be developed for all projects, activities and issues that require community participation. The plans will be shared with the Lead Applicant and Leadership Council for review and feedback. All Leadership Council meetings will be open to the public and there will be an annual open house to document progress. Meetings will be held at times accessible to the community members. Outreach materials will be translated into relevant languages and will include family-friendly messages.

Members of the Leadership Council will include:

- 1 Lead Applicant
- 1 Co-applicant from each Project
- 1 Project Lead in each initiative
- 1 Workforce working group representative
- 1 Community Engagement lead
- 1 River District PBID representative
- Up to 4 sub-contractors recommended by the Co-Applicant with a maximum of one per project type
- 1 mayor's office representative
- 1 City Council member from city council District 3
- 1 Data partner
- 1 Non-displacement partner
- Up to 8 at-large seats for interested low-income residents from the project area including 2 residents from Twin Rivers public housing, 2 residents from Cannery Place and 1 resident from Washington Plaza and community stakeholders.

Workforce Development:

The workforce development plan focuses on three areas: poverty eradication and employment; social services for the employee, regulation and policies to ensure opportunities for low-income project area residents, and an employer and industry-focused strategy.

SHRA will take the lead in coordinating the workforce development partners, including SETA, Urban Strategies, GSUL, GRID Alternatives, Sacramento Tree Foundation, and Sacramento Regional Transit Agency. SETA will expand its mobile employment services into the target area to engage, prepare, and connect residents to job opportunities. The GSUL will work with youth ages 18-24 and under-represented adults to offer educational, career training and employment opportunities. GRID Alternatives

operates the Installation Basics Training program and will provide a 100-hour IBT program to Sacramento to install a 143 kw solar PV system for the new housing development, while providing paid, hands-on, skills-based training to 12 project area residents. Sacramento Tree Foundation will prepare residents for newly created jobs to support the field work necessary for the creation of tree canopies in the project area under the neighborwoods model. SacRT will engage and support residents through the hiring process for jobs at SacRT and will work with workforce development partners to identify training needs to meet potential construction demands associated with the light rail station project.

SHRA will also work closely with the workforce development partners to ensure that any new SIMPL area jobs benefit residents in the target area. Local hire requirements are one strategy toward ensuring that the SIMPL area residents directly benefit from their community transformation. Use of local hire policies will target job opportunities to low-income, disadvantaged residents and people of color who might otherwise not benefit from the new development.

Displacement Avoidance:

The applicant proposes to implement the following policies to prevent the displacement of households in the Project Area:

- Passage of a housing bond
- Creation of accessory dwelling units
- Development of a community land trust
- Production of family rental and ownership units near transit
- Implementation of a condominium conversion policy
- One to one replacement of public housing units
- Acceptance of rental subsidies to ensure people stay housed
- Acquisition/rehabilitation of existing units near transit

Adequate financing will need to be obtained to implement several of the policies, such as the Community Land Trust, the one to one replacement of public housing units, the acquisition and rehabilitation of units, and the development of family-sized housing. Adequate political support will be needed in order to implement the following policies, such as the production of family rental and ownership units near transit, the implementation of a condominium conversion policy, and the creation and allowance of accessory dwelling units.

The following policies will be implemented to prevent the displacement of small businesses in the Project Area:

- Development of no-cost and low-cost business development and retention programs
- Development of layoff aversion programs

OUR PROJECTS

1

Twin Rivers
Public Housing
Development

2

Solar Panels

3

Dos Rios Light
Rail Station

4

NeighborWoods
Program

5

Twin Rivers
Housing
Community
Garden



Jump Bikes

Affordable Housing

Streetcar Project

Recreational Equipment

NeighborWoods Urban Greening & Green Infrastructure

Low Income Weatherization in Existing Homes

Light Rail

Wide Open Walls

Project area that falls within the top 5% of disadvantaged communities*

Mobility Grid

12th & 16th Street Improvements

Project area that falls within the top 25% of disadvantaged communities*

SmaRT Ride Service Area

Electric Vehicle Charging Station

ACTION

December 20, 2018

Subject: Transformative Climate Communities Program: Post-Award Negotiation Period Policies

Reporting Period: December 2018

Staff Lead: Saharnaz Mirzazad, TCC Program Manager

Recommended Action:

Approve staff recommendation of internal policies governing the post-award negotiation period for TCC Implementation Grants.

Background:

The TCC Program Guidelines provide for a Post-Award Consultation phase after the Council makes implementation grant awards. This consultation phase is an opportunity for TCC Program Staff to address the parties concerns about the draft grant agreement and to ensure that all accompanying attachments will comply with administrative, statutory, and TCC Program requirements. The internal policies proposed here stem from staff experience negotiating changes to Round 1 implementation grants.

Proposed Policies:

The following policies would govern TCC Program Staff in finalizing the grant agreement terms of each awarded application during the Post-Award Consultation Phase as described in Section II.H of the 2018-2019 TCC Program Guidelines. All changes to proposed projects from the awarded application – including changes to proposed project scopes, activities, and associated budgets – would be reviewed by TCC Program Staff and SGC legal counsel for consistency with the relevant TCC Program Guidelines and this document.

- 1) Ineligible project costs must unconditionally be eliminated from the proposed scope of work for TCC funding. SGC cannot provide grant funds for ineligible costs.
- 2) Ineligible project costs may be reallocated to other, eligible costs within the *same originally-proposed project*, up to the total amount of the original budget request for that project, upon written approval of TCC program staff.
 - a) Example: Project A proposed \$100 in project-related costs, \$10 of which are ineligible costs. Project A must eliminate all \$10 of ineligible program activities from the proposed scope of work, but may identify up to \$10 in additional, eligible costs *for the same project*. The total budget for Project A would then remain \$100.

- 3) Reallocated budget items within the same project must be for project costs within the *same Project Type* as the originally-proposed project.
 - a) Example: Project B proposes to fund a Low-Income Weatherization Project, but includes \$10 of ineligible costs. Project B may not reallocate these \$10 to fund Urban Greening activities within the same project because that is a different Project Type than the original proposed project.
- 4) The budget for the ineligible costs in one project may be transferred to other projects, upon written approval of the TCC Program Manager.
 - a) Example: Project A has \$10 in ineligible costs. If Project A eliminates the ineligible costs from Project A's budget, \$10 could be added to the budget request for Project B, upon TCC Program Manager approval on a case-by-case basis. Project A's budget would then be \$10 less than the original budget request and Project B's budget would be \$10 more than the original budget request.
- 5) Each project with ineligible costs shall be given equal opportunity to reallocate project funds within the project.
 - a) Example: Project A and Project B both contain ineligible costs. If Project A eliminates its ineligible costs and reallocates the associated budget to new, eligible costs within the project, Project B must have the opportunity to do the same.
- 6) Upon written consent of the Grantee, Project Lead, and the SGC Executive Director, eligible project costs associated with any project may be reduced or eliminated prior to signing the Grant Agreement. The foregoing notwithstanding, no project may be eliminated that is needed to remain eligible for TCC funding per the relevant TCC Program Guidelines.
 - a) Example: Project D originally proposed to plant 10 trees for a total cost of \$100. The Project Lead for Project D no longer has the capacity to plant all ten trees, so agrees to modify the project prior to the signing of the Grant Agreement to plant 8 trees for a total of \$80.
- 7) The remainder of this document notwithstanding, SGC Council approval shall be required for any change to project costs that affects the competitiveness of an applicant's proposal by reason of changes to the applicant's greenhouse gas reduction score.
- 8) SGC Council approval shall be required for any new projects added to the Grant Agreement.



December 20, 2018

Subject: Transformative Climate Communities Planning Grant Recommendations

Reporting Period: November 2018 – December 2018

Staff Lead: TCC Program Staff

Recommended Actions:

Approve staff recommendation to award \$800,000 in FY 2018-2019 Proposition 84 funding to four (4) projects for the Transformative Climate Communities (TCC) Planning Grants Program to undertake land use planning and related activities.

The TCC Program Staff also requests the Council to authorize the SGC Executive Director to award a grant to the fifth-ranked applicant if further funds become available.

Background:

Passed by California voters in 2006, Proposition 84 appropriated funding for a variety of activities designed to protect the State's natural resources, including the Sustainable Communities Planning Grants and Incentives Program (SCPGI). The Council approved three sets of awards for SCPGI, including \$16 million at its June 3, 2014 meeting. In July 2018, The Council approved the use of reimbursed Proposition 84 funds to support TCC Round II Planning Grants.

The purpose of the TCC Planning Grant program is to assist communities in developing compelling and feasible proposals for a TCC Implementation Grant. In addition to using the funds to plan for the transformative components of the Implementation Grant application, communities are required to explain how activities are consistent with the State's Planning Priorities, identified in Section 65041.1 of the Government Code. Planning priorities focus on promoting infill development and equity by rehabilitating, maintaining and improving existing infrastructure; protecting, preserving and enhancing environmental and agricultural lands and natural and recreational resources, and encouraging location and resource efficient new development.

2018 Round II Application Process:

Updates to the TCC Round II Program Guidelines were approved by the Strategic Growth Council on July 31, 2018. The TCC Program released a Notice of Funding Availability (NOFA) on August 15, 2018, that called for planning grant applications to be submitted by Tuesday, October 30, 2018. The NOFA indicated that \$800,000 would be available for up to four (4) communities to receive planning grant awards.

Application Review Process:

A total of seven (7) planning grant applications were received for this solicitation, and a complete list of applicants can be found in Attachment B, Project Summaries and Maps.

All applications were reviewed according to the following process:

Completeness Check:

After receiving the applications, TCC Program Staff reviewed the submitted application materials for completeness. This included determining if project areas were eligible, reviewing the applications for missing documents, and ensuring that the project workbooks were completed correctly. Applicants were given two (2) business days to correct any issues identified by Program Staff.

Interagency Review Panel

Program Staff developed a scoring rubric for the planning grants by using the scoring criteria listed in the TCC guidelines. Program Staff also developed detailed instructions for the Interagency Review Panel (Panel) to provide direction on how to assign scores for the applications. The Panel was selected by Program Staff and consisted of twelve (12) reviewers from eight (8) agencies and departments. Each reviewer was assigned four (4) applications to review and each application was reviewed by at least six (6) reviewers.

Pre-Deliberation and Final Deliberation

Following the review of the applications, the Panel convened on two (2) separate days. During the Pre-Deliberation meeting, Panelists engaged in a high-level overview of each application. They discussed their findings as well as their interpretations of specific scoring criteria.

During the Final Deliberation, Program Staff facilitated a detailed analysis for each application to finalize the scores.

Recommended Awards:

After the final deliberation, the scores from each of the reviewers were averaged to determine the final score for the application. Staff is recommending that the top four scoring applications be approved by the Council for funding.

The recommended applicants to receive funding for TCC Round II are: South Los Angeles, Tulare County, McFarland, and Bakersfield.¹

In South Los Angeles, the City of Los Angeles Department of City Planning will partner with several local, community-based organizations that are also co-applicants on the grant to create the Climate Commons Collaborative. The Collaborative will develop the South Los Angeles Climate Commons Plan and refine strategies in three areas: 1) Housing and Parks, 2) Land Use and Jobs, and 3) Transportation, Air Quality and Community Health.

Tulare County proposes to develop a community-level climate adaptation plan for the rural community in the Matheny Tract. The plan will identify priorities and recommend community-specific solutions to climate adaptation, in collaboration with county agencies and community-based organizations.

The City of McFarland will work to identify projects throughout the City that will have the most environmental impact and create a healthier McFarland. They will host four public workshops with partner organizations, including the McFarland Unified School District, Cesar Chavez Foundation, Chamber of Commerce, and Kern Council of Government, to solicit input on strategies to increase housing affordability and transportation options in the project area. This engagement process is

¹ The average scores for all of the Planning Grant applications can be found in Attachment A.

intended to help McFarland develop a list of projects to include in an Implementation Grant application.

In the City of Bakersfield, the applicant and co-applicants will conduct studies and community outreach activities to develop a plan that prioritizes alternative transportation, affordable housing and workforce development projects to be included in a future TCC Implementation Grant application. Partners include the Kern Council of Governments, Center on Race, Poverty and the Environment, Bike Bakersfield, and California Walks. The proposal builds on previous planning activities conducted for the High Speed Rail Station Area Plan.

All of the selected applications had strong involvement from local community groups and clearly explained how those groups would be involved in the planning activities. The awarded applicants also explained how they will use the funds to prepare for a TCC Implementation Grant and how their project area would be an ideal location for transformation through a larger funding awarded.

As Attachment A shows, the City of Indio's application ranked fifth after the review process, very closely behind Bakersfield. The City of Indio proposes to examine existing local and regional plans, and to outline a pathway to a mixed-use, multi-modal, and multi-faceted development to improve community well-being. In the event that the Strategic Growth Council approves additional Proposition 84 funding to be spent for Round II of TCC, staff recommends that the City of Indio receive funding.

Applications Not Recommended for Funding:

In addition to the City of Indio, two additional applications were not recommended for funding: the cities of Pico Rivera and Blythe.

The City of Pico Rivera proposes to conduct two studies related to electrifying the public transportation fleet and implementing electric vehicle infrastructure. The City of Blythe proposes to develop a Downtown Climate Action Plan to identify and prioritize active transportation, green infrastructure, parks, and affordable housing projects that achieve greenhouse gas reduction goals and are competitive for future opportunities.

The three applications that are not being recommended for funding all demonstrated the need for planning activities in their particular planning area. However, they were not as strong in demonstrating how they would use the funds to prepare for the various transformational elements of a TCC implementation grant. They also did not have the same level of meaningful community engagement planned with local residents and community organizations.

Next Steps:

Following approval by the Council, TCC Program Staff (Program Staff) will enter into a Post-award Consultation phase with each awardee. During this phase, Program Staff will work with the awardee to modify and refine the submitted application materials to ensure it follows all statutory, administrative, and TCC Program requirements. Awarded applications are also subject to modifications based on input from the Council and/or application reviewers. Program Staff will work with awardees during this phase to develop a grant agreement and review grant administration procedures.

Attachment A: Planning Grant Scores

The Planning Grant scores for each of the applications averaged across all reviewers are below.

City/County	Average
South Los Angeles	92
Tulare County	83
McFarland	79
Bakersfield	78
Indio	76
Pico Rivera	68
Blythe	66

Attachment B: Project Summaries and Maps

The first four applications listed are recommended for funding.

Planning Grant Application: South Los Angeles, “South LA Climate Commons Collaborative: Aligning State and Local Priorities with a Community Vision”

Co-applicants: Brotherhood Crusade, LA Neighborhood Land Trust, Strategic Actions for a Just Economy, Strategic Concepts in Policy Organizing and Education, Slate-Z, TRUST South LA

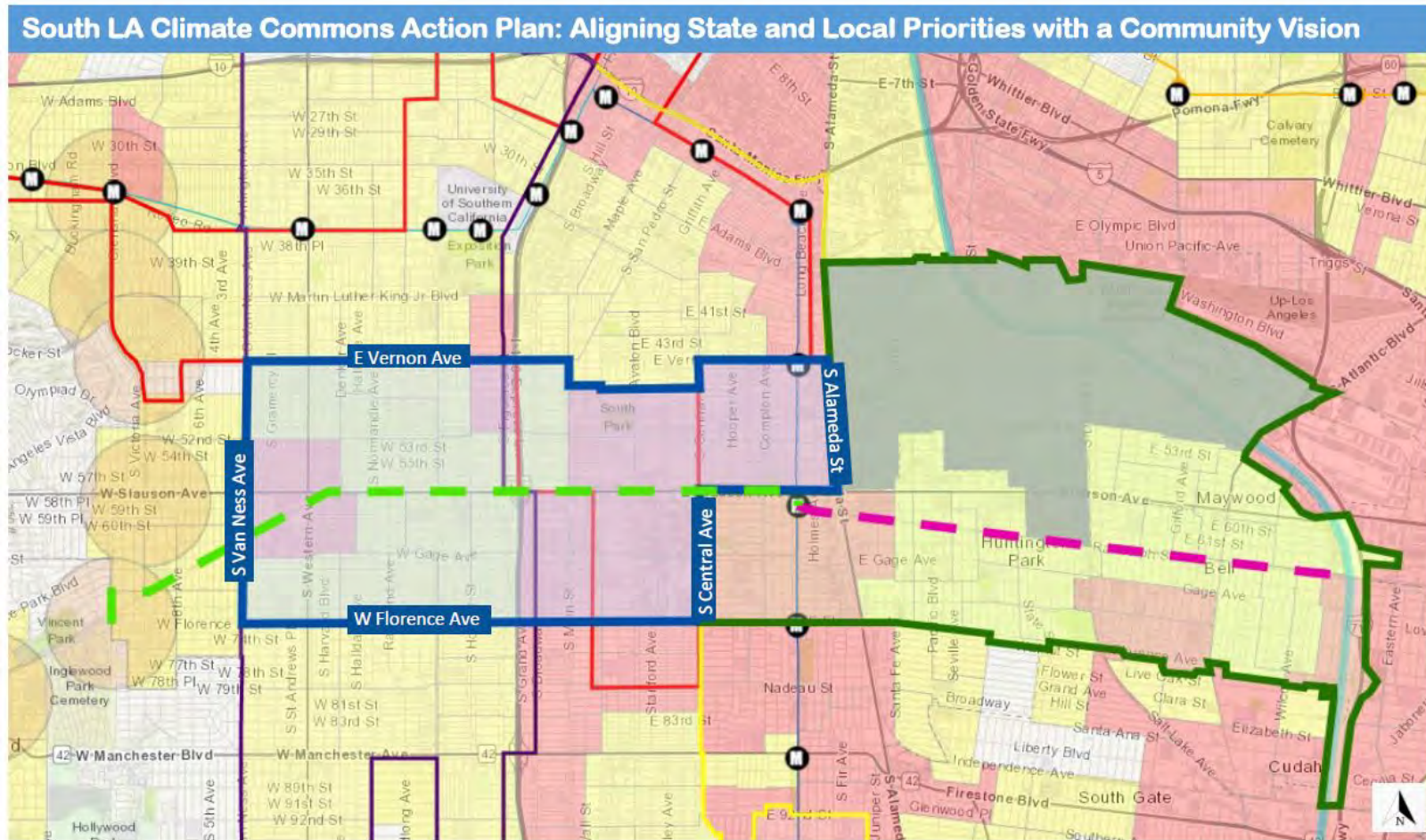
Total Request: \$200,000.12

Project Summary: The Department of City Planning will partner with several local community-based organizations to create the Climate Commons Collaborative. The Collaborative will develop the South Los Angeles Climate Commons Plan (CCP) for a Project Area that includes several neighborhoods in South Los Angeles: Hyde Park, Chesterfield Square, Manchester Square, Vermont Knolls, Harvard Park, Vermont Slauson, and Florence. The Project Area was determined after the completion of a needs assessment, asset mapping activity, identification of large-scale projects and leveraged funding opportunities in the region, and consultation with various technical assistance providers. The Plan will include strategies in three areas:

- 1) Housing and Parks;
- 2) Land Use and Jobs; and
- 3) Transportation, Air Quality and Community Health.

The proposed Climate Commons Plan is consistent with and builds upon the Slauson Corridor Transit Neighborhood Plan, the South Los Angeles Community Plan, Southeast Los Angeles Community Plan, the Vision Zero Action Plan, the City’s Housing Element, Sustainable City pLAN, and the SCAG 2012-20135 Regional Transportation Plan/Sustainable Communities Strategy.

Summary of Deliberation Discussion: The proposal is comprehensive and addresses the community’s specific needs, resources, and opportunities. The proposal also includes strong and diverse partners, deep community partnerships, and clearly defined roles for all the partners. The review panel felt the grant would help prepare the applicants for the TCC Implementation Grant.



Legend

- | | | | | |
|--|---|---------------------------------------|--|---|
| <p>Planning Activities Area, City of Los Angeles</p> | <p>SLATE-Z Promise Zone</p> | <p>Metro Rail to River (B)</p> | <p>Metro Rail Lines</p> <ul style="list-style-type: none"> Blue Line Expo Line Gold Line | <p>CalEnviroScreen 3.0</p> <ul style="list-style-type: none"> Top 5% Top 25% |
| <p>Coalition Building and Partnership Development Area, LA County + Local Jurisdictions</p> | <p>Community Plan Areas</p> <ul style="list-style-type: none"> Southeast Los Angeles South Los Angeles | <p>Los Angeles River</p> | <p>Metro Stations</p> | <p>Insufficient CES data, City of Vernon industrial area</p> |
| | | | <p>Rail Under Construction</p> <p>(1/2 mile buffer)</p> | |



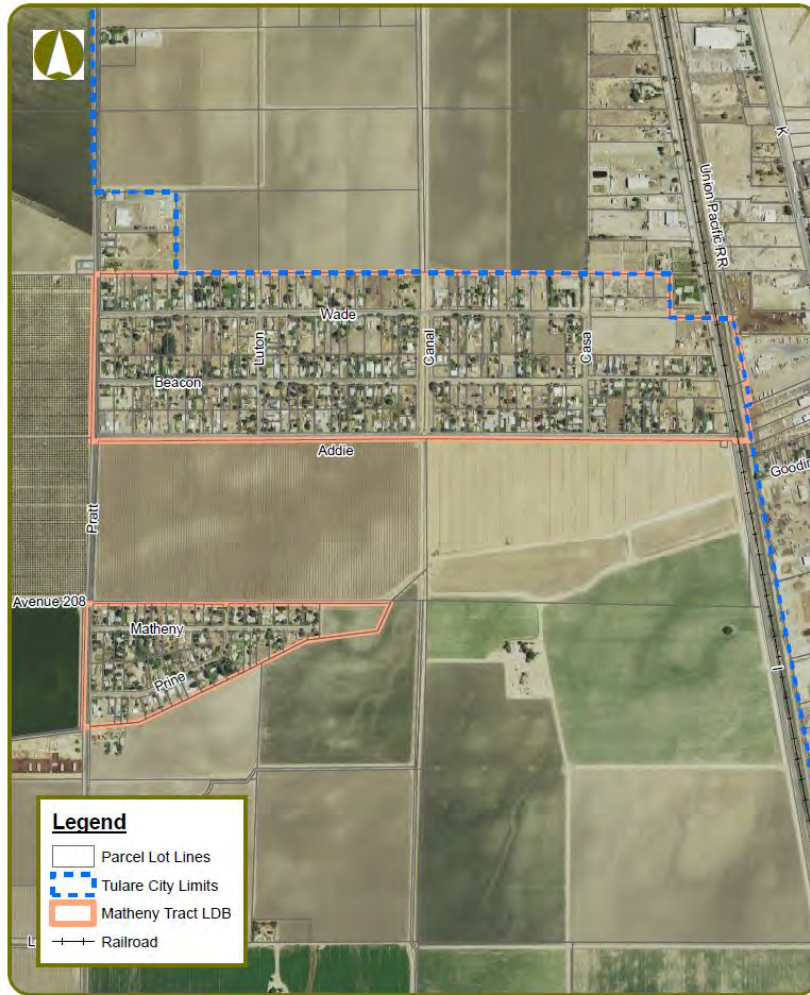
Planning Grant Application: Tulare County, “Matheny Tract Climate Adaptation Plan”

Co-applicants: Tulare Health and Human Services Agency

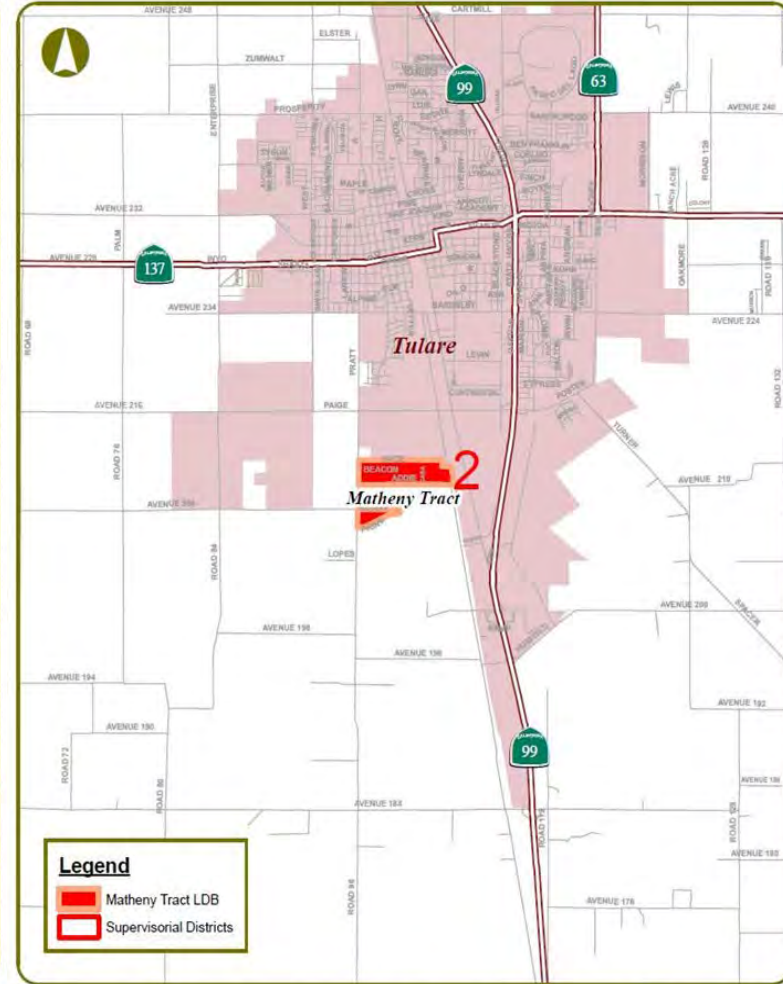
Total Request: \$200,000

Project Summary: The County of Tulare County to develop a community-level climate adaptation plan for the rural community of Matheny Tract, an area identified as 85-90% disadvantaged per CalEnviroScreen 3.0. Matheny Tract is an unincorporated community of about 188 acres with approximately 300 homes near the southwest boarder of the City of Tulare. The plan is intended to improve outcomes for the Project Area’s most vulnerable residents by providing residents to identify priorities and recommend community-specific solutions to climate adaptation, and will be developed in collaboration with county agencies, community-based organizations, and community groups. Through a series of workshops and grassroots outreach, this plan will include multiple, coordinated greenhouse gas emission reduction projects that provide local economic, environmental, and health benefits; and a list of policies and funding sources to support climate adaptation county-wide will also be developed.

Summary of Deliberation Discussion: The proposal will address the Planning Area’s specific infrastructure challenges. The partnership structure was diverse and demonstrated clear roles and responsibilities for the proposed activities. The review panel would like the planning activities to address conflicting land use issues in the area, and further develop the budget detail.



0 500 1,000 Feet
 Matheny Tract Aerial Map | Figure X.X-XX



0 1 2 Miles
 Matheny Tract Vicinity Map | Figure X.X-XX

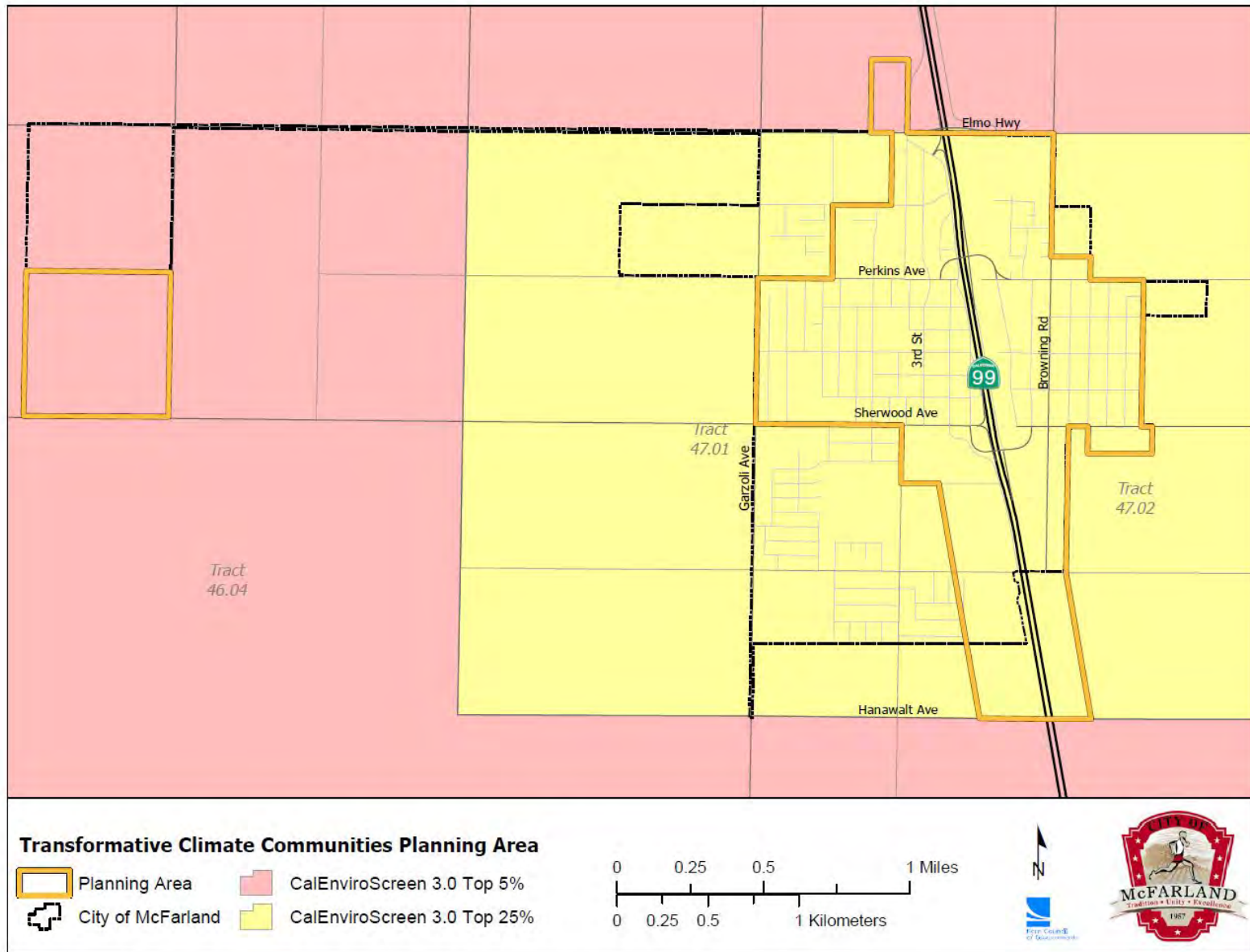
Planning Grant Application Name: City of McFarland, “McFarland Transformational Planning”

Co-applicants: McFarland Tri-Agency Partners, McFarland Unified School District, McFarland Recreation and Park District

Total Request: \$198,652.15

Project Summary: The City of McFarland is seeking a TCC Planning Grant to assist with identifying projects in the City’s disadvantaged areas that will have the most environmental impact and create a healthier McFarland. The City will host four public workshops with partner organizations, including the McFarland Unified School District, the Cesar Chavez Foundation, the Chamber of Commerce, and the Kern Council of Government. The purpose of the public meetings will be to solicit input on strategies to increase the availability of affordable housing and transportation options in the project area. During the workshops, recent planning studies and maps will be presented to help residents identify the future projects. The workshop organizers will also conduct a survey using survey monkey.

Summary of Deliberation Discussion: The panelists agreed that McFarland demonstrates a need for planning activities since it is a dense, walkable city with limited staff and planning capacity. Despite its small staff, the city completed a number of planning documents in the past few years, including the City of McFarland Bicycle Master Plan, a 2013 Complete Streets Plan, and a 2018 General Plan Amendment. Another strength of the application is that the city enlisted numerous organizations and partners when developing its plan. The review panel would like further development of the targeted transformative plan elements and proposed activities.



Planning Grant Application Name: City of Bakersfield, “Revitalizing Downtown Bakersfield: Live, Work, Play”

Co-Applicants: Housing Authority of the County of Kern, Kern County Employers’ Training Resource

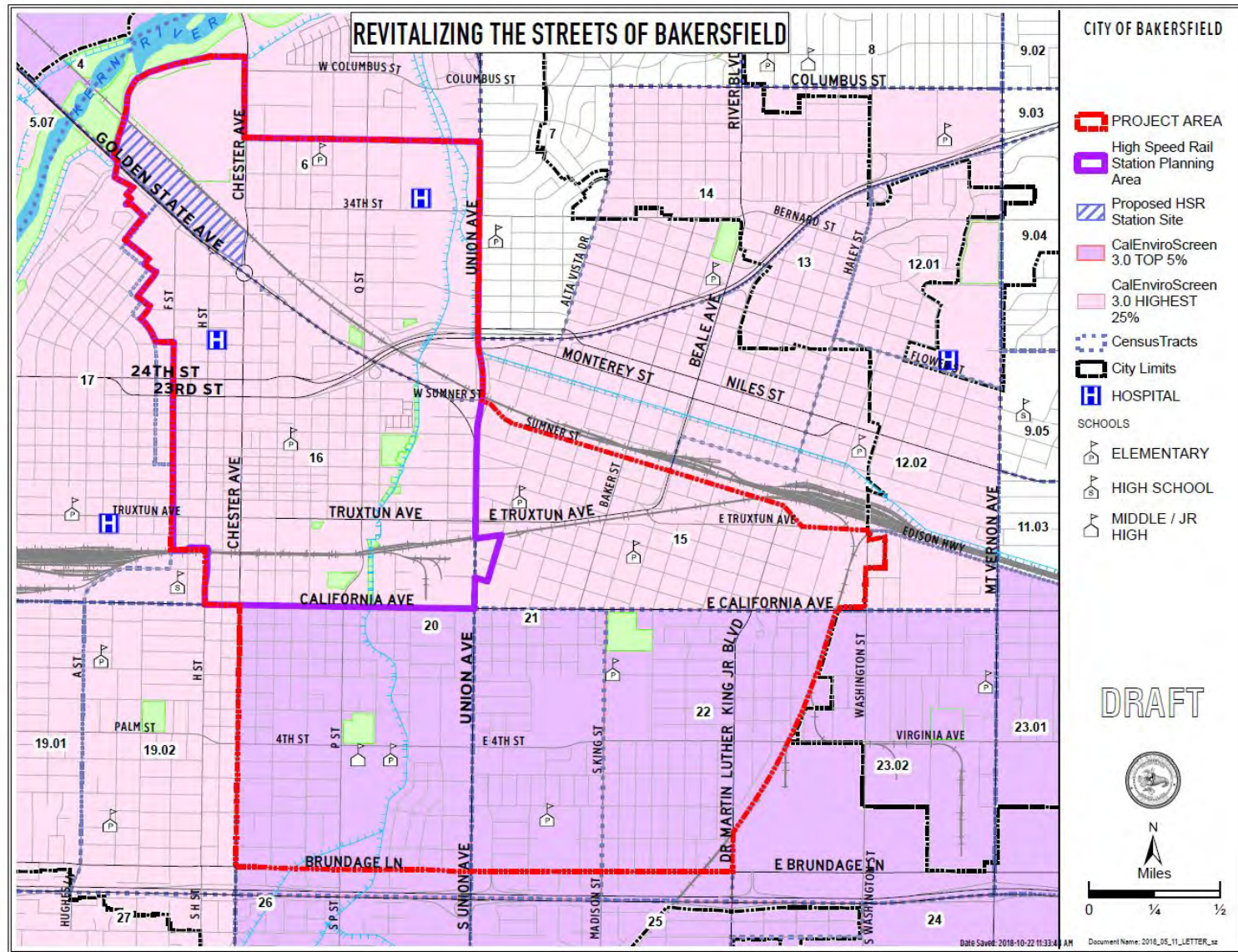
Total Request: \$200,000

Project Summary: The City of Bakersfield and its Co-applicants are seeking a TCC Planning Grant to conduct studies and community outreach activities to develop a plan that prioritizes alternative transportation, affordable housing and workforce development projects to be included in a future TCC Implementation Grant application. The Planning Area encompasses the downtown area and historic neighborhoods to the east and south and includes the High Speed Rail Station area. The proposed studies of the plan include:

- 1) Complete an Affordable Housing Site Analysis that identifies potential locations for future affordable housing projects and the steps needed to ensure that they are shovel ready for the next rounds of TCC Implementation Grant funding;
- 2) Conduct a Workforce Development Demographic and Labor Market Study that identifies workforce development needs of residents in the Planning Area, as well as potential strategies to support employment related activities beyond the Workforce Opportunities and Investment Act, and conduct community outreach on workforce development needs; and
- 3) Develop an Alternative Transportation, Housing and Workforce Development Prioritization Plan, that works with community residents to prioritize alternative transportation projects included in the High Speed Rail Station Area, to maximize connections for residents of the Planning Area to housing and workforce development activities while also reducing Greenhouse Gas emissions.

Additional project partners include the Kern Council of Governments, the Center on Race, Poverty and the Environment, Bike Bakersfield, and California Walks that will assist with community outreach and technical aspects of the grant.

Summary of Deliberation Discussion: The proposal builds upon previous planning activities such as High Speed Rail Station Area Plan, Bicycle Transportation Plan and Regional Transportation Plan and Sustainable Communities Strategy. The proposal also includes a diverse coalition of co-applicants and project partners with expertise with community outreach, active transportation and planning activities. The review panel would like clarification on how the proposal will coordinate with similar studies conducted by housing agencies and workforce development boards.



Planning Grant Application Name: City of Indio, “Indio Transformative Climate Communities Plan”

Co-applicants: Coachella Valley Association of Governments

Total Request: \$182,750

Project Summary: The City of Indio and Coachella Valley Association of Governments are seeking TCC funding for a Transformative Climate Communities Plan to identify and prioritize investments that will catalyze economic and environmental transformation in the most disadvantaged areas in the City of Indio. The Plan will facilitate strategies that maximize neighborhood-level environmental, public health, workforce, and economic benefits over the proposed Planning Area in Downtown Indio and the Jewel Community. The proposed planning activities will outline a pathway to mixed-use, multi-modal and multi-faceted development to improve community well-being. This will be done through the analyses of existing local and regional plans, and management of stakeholder and community engagement to gain input for the development of the TCC Plan.

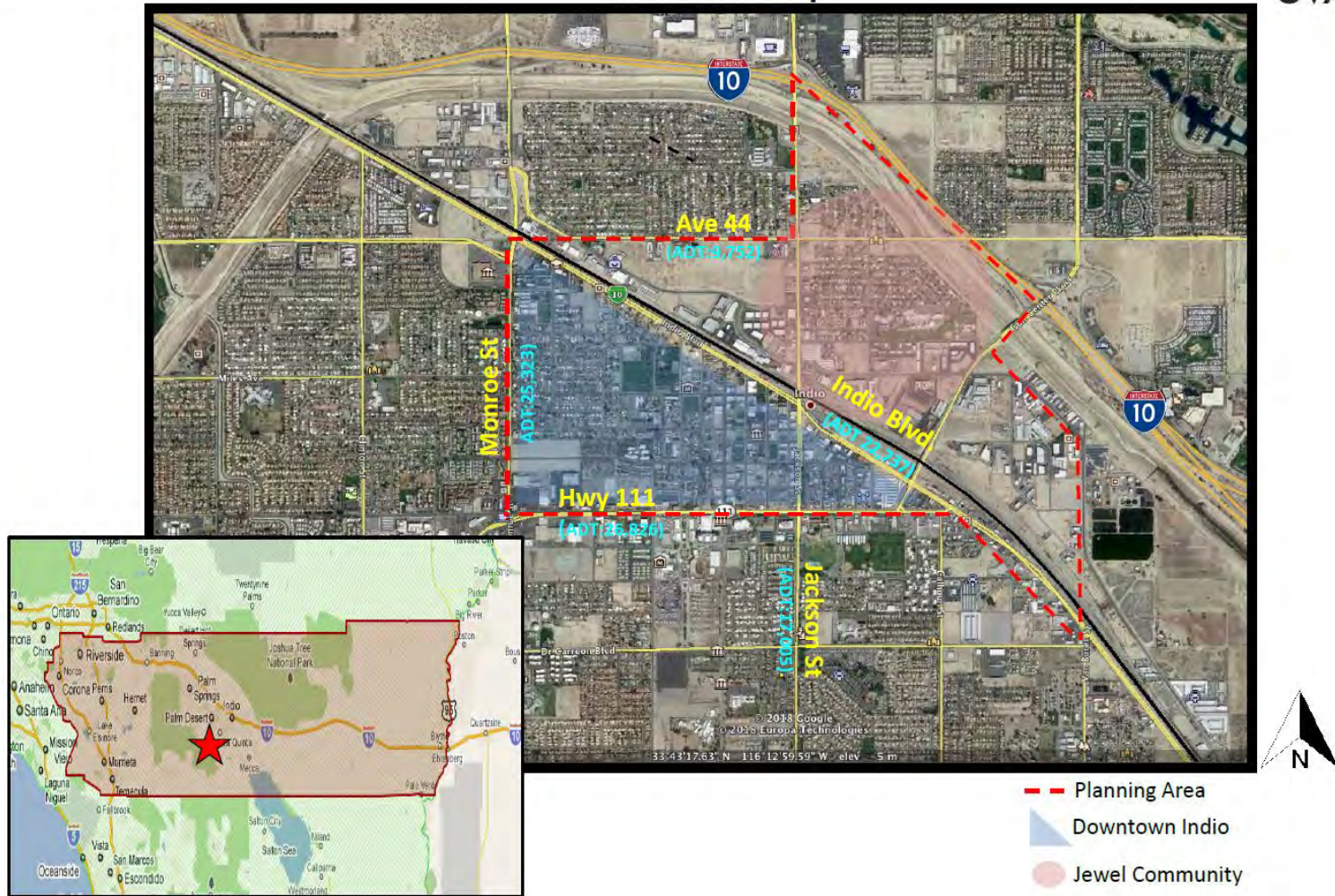
Summary of Deliberation Discussion: The proposal clearly described the needs of the community and appears to connect to the goals of the TCC Program. One strength of the application is that the local school district, which is the biggest employer in the area, is a Partner for the project. The review panel wanted clarification on the level of involvement of the Community Based Organizations and outreach groups active within the area.



2018 Transformative Climate Communities Program
City of Indio & Coachella Valley Association of Governments
Transformative Climate Communities Plan



Location Map



Planning Grant Application Name: City of Pico Rivera, “The Local Development and Sustainability Project”

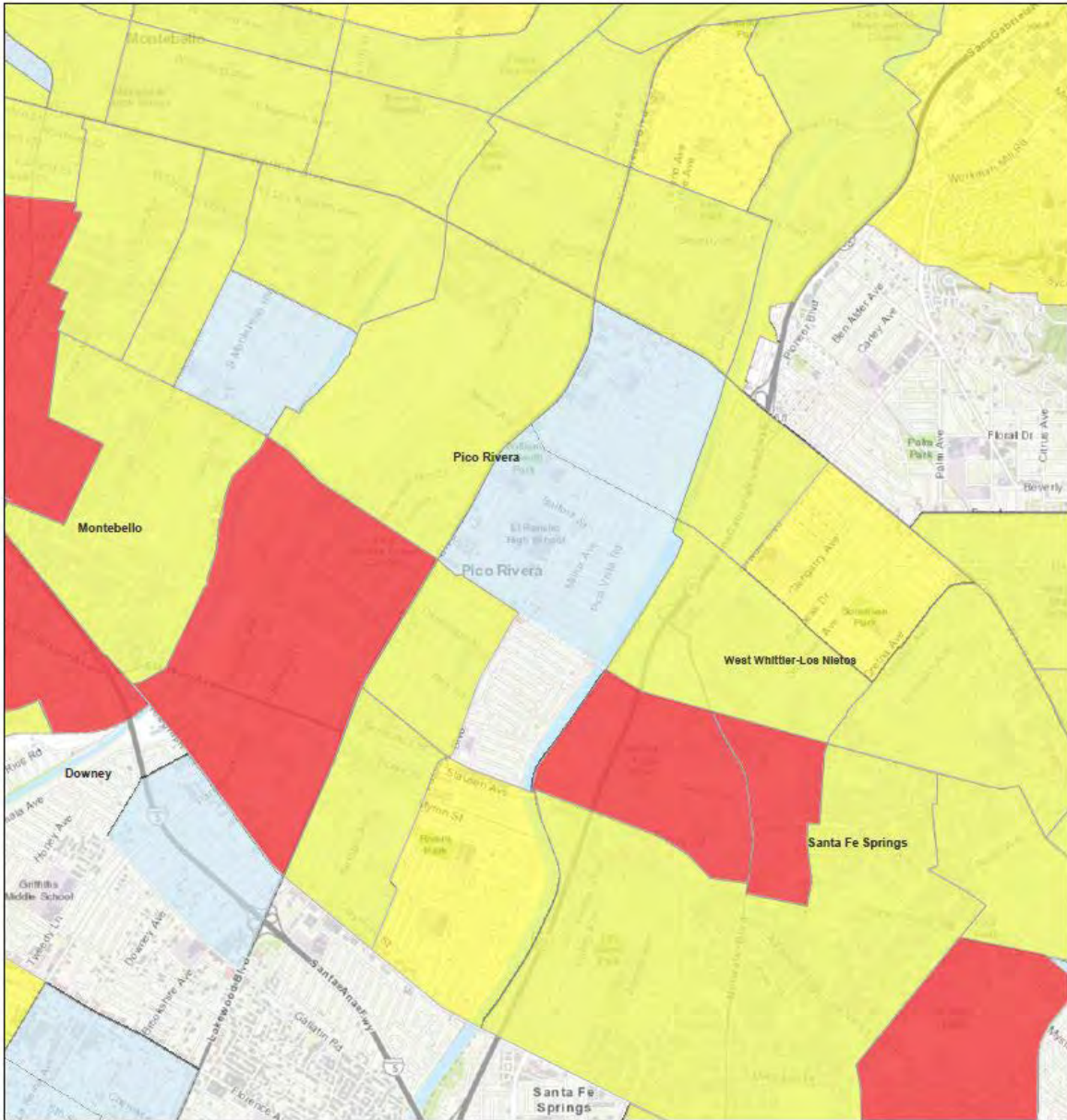
Co-applicants: City of Montebello, Gateway Cities Council of Governments

Total Request: \$200,000

Summary of Proposal: The City of Pico Rivera is seeking a TCC Planning Grant to develop and implement two sustainable transportation components within the Planning Area. The Planning Area covers the breadth of the City of Pico Rivera, approximately nine square miles. The objective of the Planning Grant is to improve the efficiency of the City’s transit system by aligning with regional efforts and reducing carbon emissions for the most frequently used transit services. The planning studies are proposed to help gather needed data to better understand baseline traffic in the city and determine the best approach to electrifying transportation in the area. The proposed transportation components are:

- 1) “Public Transportation Electrification Study” in partnership with the City of Montebello to determine the feasibility an all-electric bus fleet; and
- 2) “Electric Vehicle Infrastructure Investment Planning Study” in step with regional transportation study efforts.

Summary of Deliberation Discussion: The proposal provided specific details on how the grant funding would be spent and appeared to be feasible to complete within the 1-year timeframe. Proposal is unclear, however, on how the plans would lead to positive outcomes for the community, and if community engagement would be fully developed. The review panel commented that the proposal was not in-line with the TCC Program’s objectives.



Name: City of Blythe, “Re-envision Blythe: Downtown Climate Action Plan”

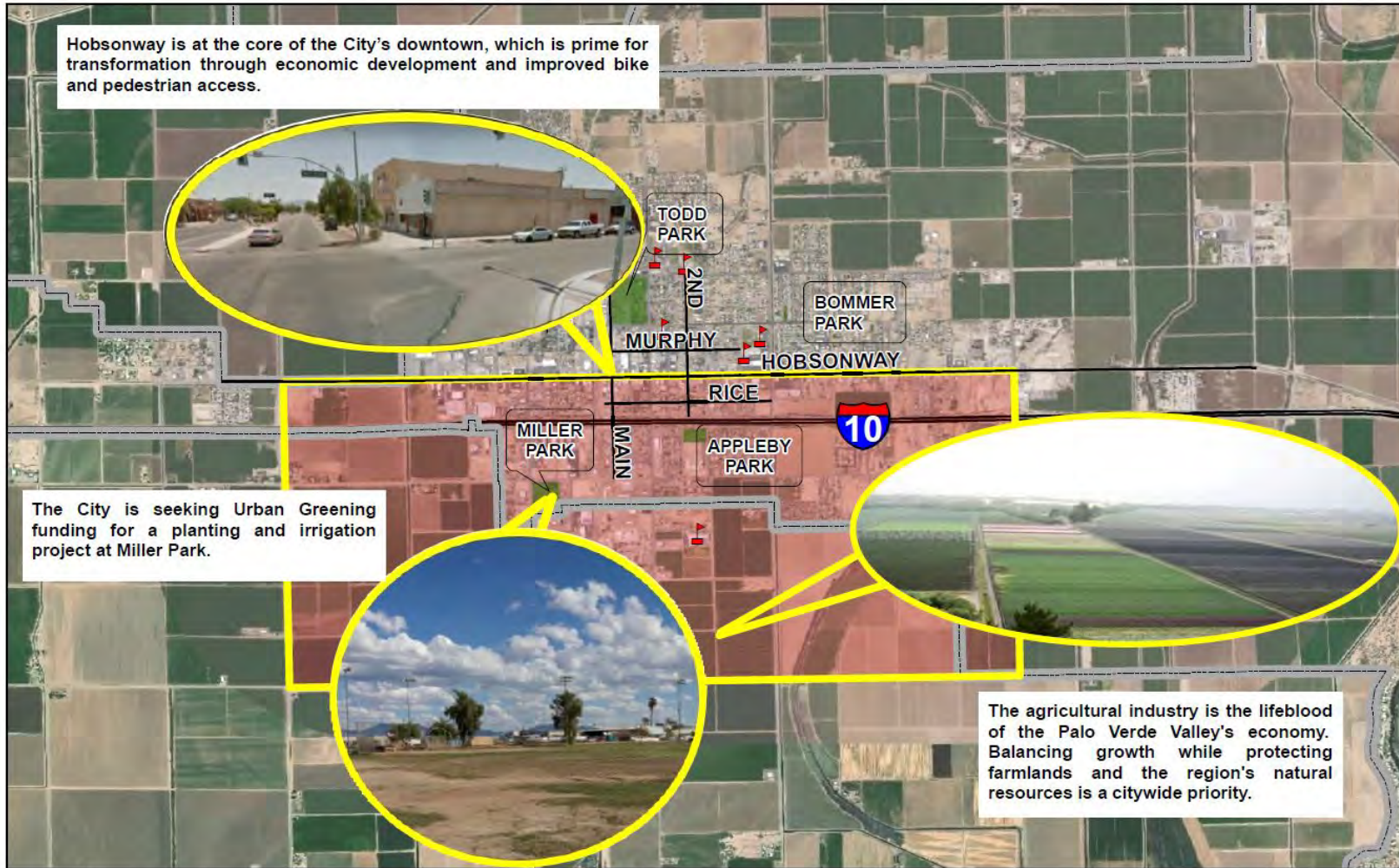
Co-applicants: Coachella Valley Association of Governments

Total Request: \$194,050

Project Summary: The City of Blythe proposes to develop the “Re-Envision Blythe: Downtown Climate Action Plan” to identify and prioritize active transportation, green infrastructure, parks, and affordable housing projects that achieve greenhouse gas reduction goals and are competitive for future climate investment opportunities. Downtown Blythe was designated an “Opportunity Zone” in 2017, and the proposed plan would build on the 2012 Climate Action Plan effort. The City proposes to host project meetings with partnering public agencies – the Palo Verde Valley Transit Agency, Blythe Area Chamber of Commerce, and regional and state elected officials – and engage downtown residents and businesses through outreach materials, online feedback surveys, and community meetings. Coachella Valley Association of Governments would provide organizational capacity support for consultant hiring, community outreach, and Geographical Information Systems work.

Summary of Deliberation Discussion: The proposal provided a suitable Planning Area that demonstrates a need for climate planning activities. The proposal also demonstrated strong public agency support and the need to re-engage the community in planning processes. The review panel wanted clarification on the general description of the targeted plan components, how the proposal would address the benefits to disadvantaged community residents, and the plan to engage residents that face barriers to engagement, such as linguistic barriers.

Re-Envision Blythe Planning Area



Hobsonway is at the core of the City's downtown, which is prime for transformation through economic development and improved bike and pedestrian access.



TODD PARK
2ND

BOMMER PARK

MURPHY

HOBSONWAY

RICE



MILLER PARK
MAIN

APPLEBY PARK

The City is seeking Urban Greening funding for a planting and irrigation project at Miller Park.



The agricultural industry is the lifeblood of the Palo Verde Valley's economy. Balancing growth while protecting farmlands and the region's natural resources is a citywide priority.

Legend

-  Blythe Planning Area
-  City Boundaries
-  Schools
-  Roads

