

# California Agricultural Land Equity Task Force



November 13, 2024 | 10:00 am – 5:00 pm

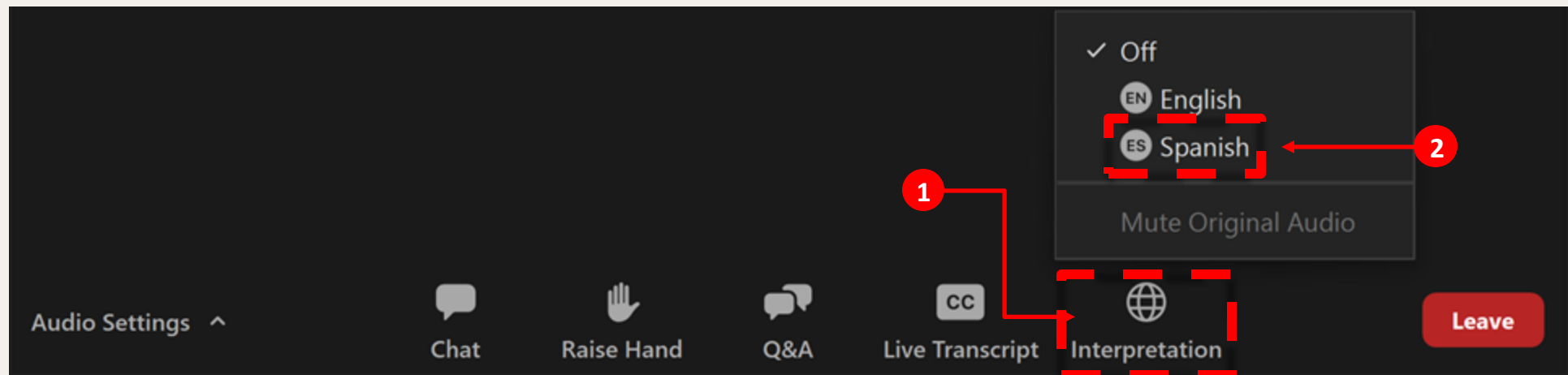
November 14, 2024 | 8:45 am – 2:30 pm

United Way, Salinas

# Listening to Language Interpretation

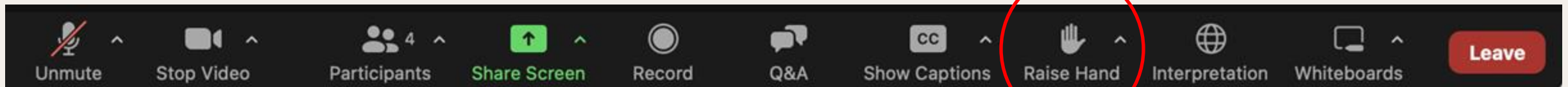
## Cómo escuchar la interpretación de un idioma

1. In your meeting controls, click **Interpretation**. It can be located at the bottom of the screen. / En los controles de la reunión, haga clic en (**Interpretation**). Esto se puede localizar en la parte de abajo.
2. Click the language that you would like to hear. For this meeting, you will have English and Spanish as your options. / Haz clic en el idioma que desee escuchar. Para esta reunión, hay las opciones de Inglés y Español.
3. To only hear the interpreted language (Spanish), click **Mute Original Audio**. / Para escuchar solo el idioma interpretado (español), haz clic en (**Mute Original Audio**).



# Zoom Tips

- All participants are **muted** upon entry.
  - You will be unmuted when it is your time to speak.
  - Please remember to mute yourself after speaking.
- Cameras are optional.
- Use “Raise Hand” feature during public comment periods.





# Public Comment Process

## IN PERSON

- Submit the public comment card on the front table
- Separate form for each item
- Listen for your name and line up by the podium
- Staff will call your name to the podium
- Please adhere to **2-minute** time limit

## VIRTUAL

- Complete form at [sgc.ca.gov/meetings-events](https://sgc.ca.gov/meetings-events)
- Separate form for each item
- Listen for your name and “raise your hand” on Zoom
- Staff will unmute your microphone
- Please adhere to **2-minute** time limit

# Participation Guidelines



**Share, Listen,  
Learn**



**Respect Different  
Perspectives**



**Stay on Point**

# Role Call

# **Welcome Remarks**

Chairwoman Louise J. Miranda Ramirez,  
Ohlone Costanoan Esselen Nation

# Agenda Review

## Wednesday, November 13

- Approval of Meeting Summary from 08.14/15.2024
- Staff Report
- **Action:** Per Diem Allowances
- **Discussion:** One year review and check in
- **Presentation and Discussion:** Land Governance and Cooperative Ownership Models
- General Public Comment



# Agenda Review

Thursday, November 14

- **Working Session:** Interactive small group discussions
- **Work Planning and Next Steps**
- **General Public Comment**

# **Meeting Summary from August 14-15, 2024**

# Staff Report

# Staff Report

## Overview:

- Announcements and updates
- Responses to questions from previous meetings

# Announcements & Updates

## **Proposition 4 Section 93550:**

1. Of the funds made available by Section 93500, thirty million dollars (\$30,000,000) shall be available, upon appropriation by the Legislature, to the Department of Conservation, in consultation with the California Agricultural Land Equity Task Force at the Strategic Growth Council, to improve land access and tenure for socially disadvantaged farmers or ranchers, tribal producers, and beginning farmers and ranchers.
2. The Department of Conservation may make low-interest loans to qualified entities, which shall include land trusts, nonprofit organizations, public agencies, farmer cooperatives, tribal governments, or tribal entities, for the purpose of acquiring agricultural lands to transfer or provide long-term leases to socially disadvantaged farmers or ranchers and beginning farmers and ranchers.



# Announcements & Updates, continued

- SB 1448 signed into law Sep. 2024
  - Per diem allowances for public members
  - Requires SGC post ALETF's final report on its website
- Travel reimbursement: As of Oct. 1, State follows federal standard rates. See CalHR website for details.
- Land access experience survey is now live! Open through Jan. 31, 2025
- Seeking Advisory Committee members. Interest form open through Dec. 1, 2024
- ALETF website updates
- Updates from ALETF members

# Responses to Questions

## What is the process for requesting photo permissions from site visit hosts?

May and Aug. site visit hosts provided written or verbal permission. From Nov. onward, staff will provide a photo permission form to site visit hosts.

## Can Task Force members send feedback on materials in between meetings?

Yes. Task Force members may communicate directly with staff on an individual basis. Staff will compile Task Force members' feedback for further consideration by the Task Force.

# Public Comment Process

## IN PERSON

- Submit the public comment card on the front table
- Separate form for each item
- Listen for your name and line up by the podium
- Staff will call your name to the podium
- Please adhere to **2-minute** time limit

## VIRTUAL

- Complete form at [sgc.ca.gov/meetings-events](https://sgc.ca.gov/meetings-events)
- Separate form for each item
- Listen for your name and “raise your hand” on Zoom
- Staff will unmute your microphone
- Please adhere to **2-minute** time limit

# **ACTION: Per Diem Allowances**

# Action: Per Diem Allowances

## Overview:

- SB 1448 (Hurtado) signed by Governor Newsom in Sep. 2024
- Per section 75129.5 (a), SGC may “provide public members of the California Agricultural Land Equity Task Force...a reasonable per diem allowance as specified in Section 11564.5 of the Government Code [\$100], or at a higher rate that may be established by the task force, for each day’s attendance at a noticed meeting of the task force.”

## Staff proposal:

- Establish reasonable per diem allowance for public members of \$500 per day’s attendance at a noticed Task Force meeting



# **One Year Review and Check-in**

# One Year Review and Check-in

## Overview:

- Provide overview of work accomplished to-date
- Contextualize the work of the Task Force
- Reflections from Task Force members and strategic thinking about the year ahead

# One Year Review and Check-in

## Five Quarterly Task Force Meetings:

- **October 2023:**
  - Established governance
  - Shared foundational research
- **February 2024:**
  - Key themes and topics of importance
  - Preliminary Work Plan
- **May 2024:**
  - Learned from site visits
  - Discussed resource landscape from provider and farmer perspectives
  - Formed Subcommittees: SNCR, Grants & Resources, Community Outreach

# One Year Review and Check-in

## Five Quarterly Task Force Meetings:

- **August 2024:**
  - Learned from site visits
  - Discussed SGMA and land and water market impacts
  - Heard from subcommittees
  - Formed three new Subcommittees: LUGS, Land Tenure, LA3
- **November 2024:** Today!
  - Discuss land governance and cooperative ownership models
  - Subcommittee & Work Group updates
  - Working Session & Work Planning

# One Year Review and Check-in

## Research, Resources & Materials:

Year	Month	Meeting Title	Location	Facilitator	Key Topics/Outcomes
2024	May	California Agricultural Land Equity Task Force Meeting	Virtual	Nelson Hawkins	Priority for small-scale farmers, farmers of color and beginning farmers and ranchers. To be eligible for certain programs, current management must be a farm or ranch. Review of management of farming operations, including financial and physical. Review of land use, and appropriate regulations and contributions for the business, industry.
2024	February	Small Business Roundtable	Virtual	Small Business Roundtable	A program designed to support small businesses in California through participating entities approved by the U.S. Department of Agriculture. Focus on agriculture and food-related businesses up to 50% of revenue.
2024	February	Small Business Roundtable	Virtual	Small Business Roundtable	Small Business Roundtable
2024	February	Small Business Roundtable	Virtual	Small Business Roundtable	Small Business Roundtable
2024	February	Small Business Roundtable	Virtual	Small Business Roundtable	Small Business Roundtable

### California Agricultural Land Equity Task Force Meeting Summary: May 9, 2024

DRAFT until approved at subsequent meeting

#### Meeting Called to Order

Chair Nelson Hawkins called the meeting to order at 8:05 am, with special thanks to the public and invited guest speakers for joining the meeting.

#### Roll Call

Roll call was conducted by Meagan Wylie, Facilitator. Members present:

- Nelson Hawkins, Chair
- Emily Burgueno, Vice Chair
- Irene Barralca
- Nathaniel Brown
- Ruth Dalquist-Willard
- Darlene Franco
- Lawrence Harlan
- James Nakahara
- Dorian Payán
- Thea Rittenhouse
- Doria Robinson
- Liya Schwartzman
- Qi Zhou

#### Welcome and Housekeeping

Meagan Wylie provided information on Zoom policies, interpretation services offered for in-person and online attendees, and the public comment process. She discussed the meeting plan and code of conduct. Slides and materials presented during the meeting are available on the Strategic Growth Council [SGC website](#).

#### ACTION: Approval of Summary

Approval of February 19, 2024 Meeting Summary.

#### Task Force Discussion:

no discussion.

## Briefing Materials

### Prepared for the California Agricultural Land Equity Task Force Meeting on February 16, 2024

The California Agricultural Land Equity Task Force (Task Force) was established in the Budget Act of 2022 (SB 123) to develop recommendations to equitably increase access to agricultural land for food production and traditional tribal agricultural uses. The Task Force consists of a regionally diverse group of individuals representing socially disadvantaged farmers and ranchers, land trusts, agricultural finance and real estate, and the State of California.

This briefing packet, developed by Strategic Growth Council (SGC) staff, includes three components:

1. A staff report to share updates and answer Task Force members' questions;
2. A summary of the introductory conversations the SGC facilitator conducted with Task Force members;
3. Examples of policy recommendations with a summary that defines and explains different components of making recommendations.

#### Table of Contents

Strategic Growth Council Staff Report	2
Summary of Introductory Conversations with Task Force Members	5
Examples of Policy Recommendations	14

Topic(s)	Title (hyperlinked)	Authors, Sponsors, & Publishers	Year	Summary
urban, Models for success learning	<a href="#">Urban Edge: A New Model for Success</a>	Sustainable Agriculture Education (SMAE)	2005	Sustaining cities and sustaining their regional agriculture are part of a common goal. In this effort, the urban-rural interface is a critical economic, urban influence site. The solution posed in this book's urban-rural model and plan is a new concept: the urban edge agricultural park. This concept from the perspective that the most critical place to create common ground is urban and rural interface is in the interface between the two, on available urban edge. This region of interface is a place of creativity, ripe for new ideas, with the potential to foster a rich intermingling of urban and rural activities. As an urban-rural model, food production, and agricultural learning—a facet of activities is economic, food-related, educational and recreational needs—create multi-faceted places that are urban residents and farmers for their mutual benefit.
urban, Typing Models for success	<a href="#">Model of Land Return: Land Return to Urban Agriculture Land from the Agricultural Sector and Urban to Agriculture of Urban Agriculture</a>	Sustainable Economies Lab Center	N/A	<a href="#">We created this Toolkit to help you work with your local, state, and federal agencies to land return. This Toolkit has been developed by Sustainable Economies Lab Center. It is a guide to help you understand the various ways to return land to agriculture, from urban agriculture to rural agriculture.</a>
urban	<a href="#">Sustainable Groundwater Management in the San Joaquin Valley</a>	Ellen Hanak, Andrew James, Caitlin Peterson, Alvar Escobedo-Bon, Jennifer Cole, and Dana Joerges-Horvath, Public Policy Institute of California	2022	Successful implementation of the 2014 Sustainable Groundwater Management Act (SGMA) is vital to the long-term health of the San Joaquin Valley's community, agriculture, environment, and economy. But the transition will be challenging: robust efforts to align water supplies through various like groundwater as a significant land-filling will be necessary. How the valley manages that falls paramount to protecting the region's residents—including the growers and income communities who will be most directly impacted by the changes. An coordinated planning and robust investment, the valley can navigate the shifts and uncertainties coming to us and put itself on a path to a productive, sustainable future.
urban	<a href="#">Sustainable Groundwater Management in the San Joaquin Valley</a>			Agriculture in the San Joaquin Valley is a key driver of the regional economy and an important contributor to the nation's food supply—but it faces a future with no region. By 2042, average annual water supplies could decline by 20 per cent compared to 2015, due to the reduction in groundwater availability under the Groundwater Management Act, but exacerbated by climate change and increased environmental regulations. In the worst-case scenario, nearly 900,000 acres would be fallowed, almost 50,000 jobs would be lost, and regional economic output would decline by 1.3 percent. But adaptations such as water trading and new water supplies—along with continued growth in agricultural productivity—could economic losses. New supplies could also significantly reduce the need to fallow



# One Year Review and Check-in

## Resources & Materials:

- **Research**
  - Trends in California Agricultural Land Ownership and Access (10/2023)
  - Overview of the Legislative Process (10/2023)
  - Overview of Land Use Policies Shaping Agricultural Land Access (10/2023)
  - Recent State Legislation Addressing Farmer and/or Land Equity (10/2023)
  - Grants, Loans, and Financial Incentive Programs Targeting Agricultural Land Access and/or Farmer Equity (10/2023)
  - Overview of Sustainable Groundwater Management Act (SGMA) (08/2024)
  - Parallel State Efforts Related to Land Equity (11/2024)

# One Year Review and Check-in

## Resources & Materials:

- **Resources**
  - Compendium of Additional Informational & Resources as Hyperlinks (10/2023)
  - Summary of Introductory Conversations with Task Force Members (02/2024)
  - Examples of policy recommendations (02/2024)
  - Table + Narrative: Existing Resources Related to Ag Land Access in CA (05/2024)
  - Table + Narrative: Reports and Guides concerning Ag Land Access and Equity (08/2024)
  - Work Plan (08/2024 + 11/2024)
  - Outreach Plan (09/2024)
  - Approaches to Designing Policy Recommendations (11/2024)
- **Staff Reports**
- **Meeting Summaries**
- **Meeting PPT Slide Decks**

# One Year Review and Check-in

## Focused Discussion Sessions with Guest Speakers:

- **Resource Landscape** - May 2024
  - Anthony Chang, Manzanita Capital and People's Land Fund
  - Essence Oyos, Golden Eagle Farm
  - Idzai Mubaiwa, African Sisters Produce
  - Josiah Griffin, USDA Office of Tribal Relations
  - Lena Ortega, Intertribal Agriculture Council
  - Mai Nguyen, Farmer Mai
  - Shanna Atherton-Bauer, CA Department of Conservation

# One Year Review and Check-in

## Focused Discussion Sessions with Guest Speakers:

- **Sustainable Groundwater Management Act (SGMA) and Land and Water Market Impacts on Equitable Land Access in the San Joaquin Valley** – August 2024
  - Janaki Anagha, 11th Hour Project
  - Ngodoo Atume, University of California Agriculture and Natural Resources
  - Ruth Dahlquist-Willard, UC Sustainable Agriculture Research & Education Program and ALETF member
- **Land Governance and Cooperative Ownership Models** – November 2024
  - Carmen and Hugo, Tierras Milperas
  - Dorian Payán, Sustainable Economies Law Center and ALETF member
  - Neil Thapar, Minnow

# One Year Review and Check-in

## Outreach & Engagement:

- **Site Visits**
  - San Diego – 5 sites
  - Fresno – 5 sites
  - Salinas – 3 sites
- **Ways to engage:**
  - Project website
  - Email list
  - Public comment and written communications
  - Event attendance
  - Materials: Two-pager, business cards
  - Survey
  - Listening sessions to come!
  - Advisory Committee to come!

# One Year Review and Check-in

Work Now Organized Under Three Dimensions:

**Land Access,  
Acquisition, and  
Ancestral Land  
Return**

**Land Use  
Governance and  
Sovereignty**

**Secure Land  
Tenure**

# One Year Review and Check-in

## Six Subcommittees:

- **Community Outreach:** 4 members
- **Grants & Resources:** 5 members
- **Land Access, Acquisition, and Ancestral Land Return:** 9 members
- **Land Tenure:** 2 members
- **Land Use Governance and Sovereignty:** 2 members
- **Sustaining Natural and Cultural Resources:** 4 members

## Nine Work Groups of 1 or 2 Members

Each Subcommittee has its own suite of associated research and materials, to be discussed after lunch!



Great Work!





# One Year Review and Check-in

## Contextualizing the work and scope of the Ag Land Equity Task Force

**Brief presentations on parallel State bodies and initiatives:**

**Racial Equity Commission:** Camille Randolph, Program Analyst, Governor's Office of Land Use and Climate Innovation

**Farmer Equity Act and related initiatives:** Thea Rittenhouse, Farm Equity Advisor, California Department of Food & Agriculture and ALETF member



STATE OF CALIFORNIA  
**RACIAL EQUITY  
COMMISSION**



"We are not ranking priorities or oppression. We are advancing strategies that impact all communities."

- Multnomah County (OR), Office of Diversity and Equity

# Executive Order N-16-22

*“Administration shall appoint... individuals who have demonstrated expertise and meet criteria in at least one of the following areas: ... land use, environment, agriculture... that may have an impact on racial equity or racial disparities”*

- Authority:
  - Hold hearing and perform acts necessary to carry out duties
  - Engage with advisors or advisory committees
  - Develop resources, best practices, and tools
- Output:
  - Statewide Racial Equity Framework (December 1, 2025)
  - Technical Assistance
  - Annual report

# Why Lead with Race

- The creation and perpetuation of racial inequities is baked into our culture and government.
- Racial inequities across all indicators for success are deep and pervasive.
- Other groups experience deep marginalization, including those living with a variety of abilities.
- Like race, ableism is a social construct and is often siloed from other issues and experiences.
- Leading with race helps us take an intersectional approach to better understand people's experiences and outcomes.
- Focusing on racial equity provides the opportunity to build methodologies, frameworks, and tools that can be applied to other areas of marginalization.

# Contact Us



Camille Randolph

*Program Analyst*

[camille.randolph@opr.ca.gov](mailto:camille.randolph@opr.ca.gov)

**Website:** [racialequity.opr.ca.gov](http://racialequity.opr.ca.gov)

# One Year Review and Check-in

## Reflections from Task Force Members

- Discussion questions:
  - What are you proud of from the past year?
  - What are you looking forward to in the year ahead?
  - What aspects of your work together as a Task Force have felt effective so far?
  - What could be improved, or what changes do you suggest to move forward more effectively over the next year?
- Pair and share (5 min)
- Group conversation and reflection (remaining time)
  - Share what was discussed in pairs

# Public Comment Process

## IN PERSON

- Submit the public comment card on the front table
- Separate form for each item
- Listen for your name and line up by the podium
- Staff will call your name to the podium
- Please adhere to **2-minute** time limit

## VIRTUAL

- Complete form at [sgc.ca.gov/meetings-events](https://sgc.ca.gov/meetings-events)
- Separate form for each item
- Listen for your name and “raise your hand” on Zoom
- Staff will unmute your microphone
- Please adhere to **2-minute** time limit



**Lunch Break**

# Presentation: **Land Governance and Cooperative Ownership Models**

---

**Dorian Payán**, Sustainable Economies Law Center

**Carmen and Hugo**, Tierras Milperas

**Niel Thapar**, Minnow

# Public Comment Process

## IN PERSON

- Submit the public comment card on the front table
- Separate form for each item
- Listen for your name and line up by the podium
- Staff will call your name to the podium
- Please adhere to **2-minute** time limit

## VIRTUAL

- Complete form at [sgc.ca.gov/meetings-events](https://sgc.ca.gov/meetings-events)
- Separate form for each item
- Listen for your name and “raise your hand” on Zoom
- Staff will unmute your microphone
- Please adhere to **2-minute** time limit

**15 Minute Break**

# **Subcommittee Updates**

# Subcommittee Updates

## Subcommittees:

- Community Outreach
- Grants & Resources
- Land Access, Acquisition, and Ancestral Land Return
- Land Tenure
- Land Use Governance and Sovereignty
- Sustaining Natural and Cultural Resources

# Community Outreach (Outreach)

**Members:** Burgueno, Franco, Hawkins, Zhou

## Updates:

- Met in July and October
- Developed subcommittee goals
- Discussed outreach events and activities
  - Conference attendance
  - Survey
  - Listening sessions

## Tasks:

- Develop Community Outreach Plan (complete)
- Develop multilingual survey (complete)
- Outreach toolkit

# Community Outreach (Outreach)

**Members:** Burgueno, Franco, Hawkins, Zhou

## Next Steps:

- Attend Latino Farmers Conference
- Continue developing community partner outreach list
- Organize listening sessions for 2025
  - Explore compensation mechanisms for listening sessions
- Dec/Jan meeting to discuss:
  - 2025 outreach plans
  - Recommendations related to community outreach
- Distribute survey: Support from full Task Force



# Land Access, Acquisition, & Ancestral Land Return (LA3)

**Members:** Brown, Burgueno, Dahlquist-Willard, Franco, Harlan, Hawkins, Nakahara, Robinson, Schwartzman

## Updates:

- Met in September
- Established 4 working groups:
  - Public Lands
  - Land Markets
  - Land Back
  - Land Succession Strategies

# Land Access, Acquisition, & Ancestral Land Return (LA3)

**Members:** Brown, Burgueno, Dahlquist-Willard, Franco, Harlan, Hawkins, Nakahara, Robinson, Schwartzman

## Research Tasks:

- Explore Shuumi Land Tax of the Sogorea Te' Land Trust
- Review work of California Reparations Task Force in context of this subcommittee

## Next Steps:

- Invite Dr. Risling Baldy as guest speaker
- Move priorities of each working group forward

# Grants & Resources (G&R)

**Members:** Barraicua, Nakahara, Rittenhouse, Robinson, Schwartzman

## Updates:

- Met in July and September
- Guest presentation by David Mancera re: financing land acquisition
- Established 3 working groups:
  - Financing
  - Grant Program Outcome
  - Tax Law & Incentives

# Grants and Resources, Continued

## Research Tasks in Progress:

- Tax incentive models from outside CA
- Analysis of 12 selected grant programs
- Case studies and analysis of programs that support land back

## Next Steps:

- Working groups continue working between meetings
- Subcommittee meeting in Jan. 2025

# Land Tenure (LT)

**Members:** Burgueno, Schwartzman

## Overview:

- Met in September
- Established one working group:
  - Land Tenure

## Research Tasks:

- Subdivision Map Act

# Land Tenure, Continued

## Next Steps:

- Highlight the connection between land tenure, conservation, and climate mitigation
- Focus on increasing access to legal resources and funding for TA providers
- Address insurance
- Invite Indian Land Tenure Foundation as a guest speaker

# Land Use Governance & Sovereignty (LUGS)

**Members:** Burgueno, Payán

## **Updates:**

- Met in September and formed LUGS working group
- Beginning to define key terms and develop recommendations in working group

## **Research Tasks:**

- Urban growth boundaries and urban agriculture
- Easement and grant program land improvement limitations
- Co-management agreements with the State
- Cultural fire
- CNRA Tribal Nature Based Solutions Program

# LUGS Continued

## Next Steps:

- Continue recommendations development and meet to hear from guest speakers
- Invite members from The Circle Law Group as guest speakers



# Sustaining Natural & Cultural Resources (SNCR)

**Members:** Burgueno, Franco, Harlan, Rittenhouse

## Updates:

- Met on July 2 and Oct 4

## Research Tasks:

- Existing policies and their impact on sovereignty, including regarding cultural fire, ancestral land return, and protection of Native sites, remains and artifacts
- Develop a summary of ratified and unratified treaties
- Map ancestral lands in relation to contemporary ownership, along with other mapping requests

# SNCR Continued

## Next Steps:

- Invite as guest speaker/workshop host: Redbud Resource Group
- Will meet again to clarify subcommittee scope and receive preliminary research findings

# **General Public Comment**

# Public Comment Process

## IN PERSON

- Submit the public comment card on the front table
- Separate form for each item
- Listen for your name and line up by the podium
- Staff will call your name to the podium
- Please adhere to **2-minute** time limit

## VIRTUAL

- Complete form at [sgc.ca.gov/meetings-events](https://sgc.ca.gov/meetings-events)
- Separate form for each item
- Listen for your name and “raise your hand” on Zoom
- Staff will unmute your microphone
- Please adhere to **2-minute** time limit

# Agenda Review

Thursday, November 14 from 8:45 am – 2:30 pm

- **Working Session:** Interactive small group discussions
- **Work Planning and Next Steps**
- **General Public Comment**

# **Thank You!**

The ALETF reconvenes tomorrow 11/14 at 8:45 am



# California Agricultural Land Equity Task Force



November 13, 2024 | 10:00 am – 5:00 pm

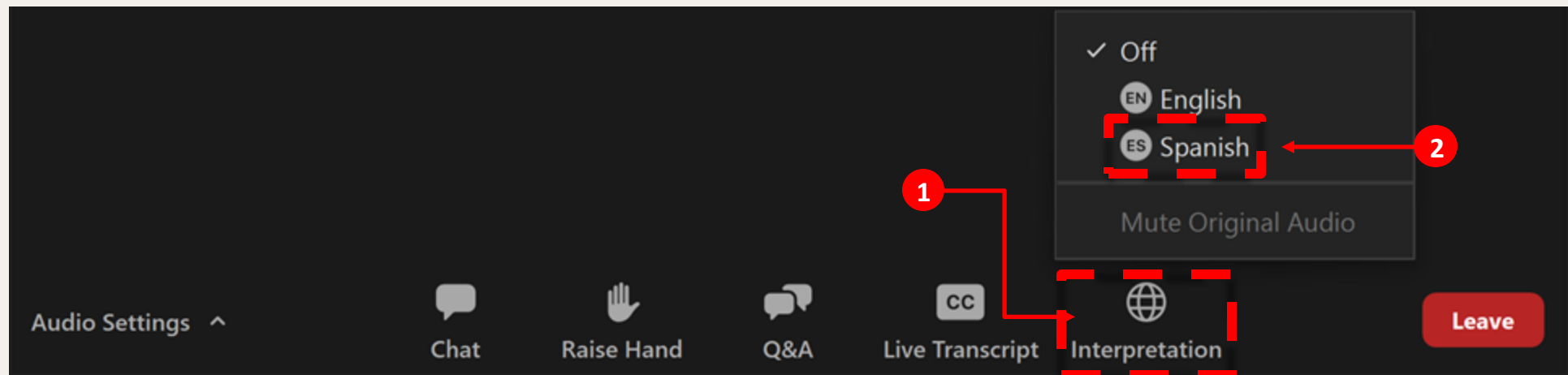
November 14, 2024 | 8:45 am – 2:30 pm

United Way, Salinas

# Listening to Language Interpretation

## Cómo escuchar la interpretación de un idioma

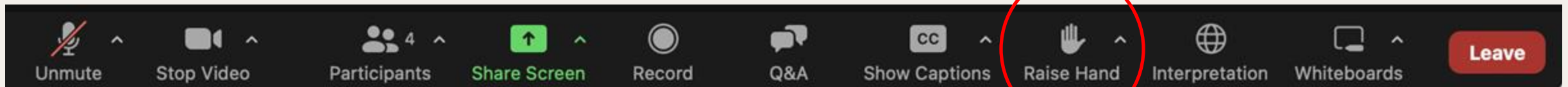
1. In your meeting controls, click **Interpretation**. It can be located at the bottom of the screen. / En los controles de la reunión, haga clic en (**Interpretation**). Esto se puede localizar en la parte de abajo.
2. Click the language that you would like to hear. For this meeting, you will have English and Spanish as your options. / Haz clic en el idioma que desee escuchar. Para esta reunión, hay las opciones de Inglés y Español.
3. To only hear the interpreted language (Spanish), click **Mute Original Audio**. / Para escuchar solo el idioma interpretado (español), haz clic en (**Mute Original Audio**).





# Zoom Tips

- All participants are **muted** upon entry.
  - You will be unmuted when it is your time to speak.
  - Please remember to mute yourself after speaking.
- Cameras are optional.
- Use “Raise Hand” feature during public comment periods.



# Public Comment Process

## IN PERSON

- Submit the public comment card on the front table
- Separate form for each item
- Listen for your name and line up by the podium
- Staff will call your name to the podium
- Please adhere to **2-minute** time limit

## VIRTUAL

- Complete form at [sgc.ca.gov/meetings-events](https://sgc.ca.gov/meetings-events)
- Separate form for each item
- Listen for your name and “raise your hand” on Zoom
- Staff will unmute your microphone
- Please adhere to **2-minute** time limit

# Participation Guidelines



**Share, Listen,  
Learn**



**Respect Different  
Perspectives**



**Stay on Point**

# Role Call

# Agenda Review

Thursday, November 14

- **Working Session:** Interactive small group discussions
- **Work Planning and Next Steps**
- **General Public Comment**

# **Working Session**

# Working Session Overview

**Goal:** Explore key questions and advance development of draft recommendations through small groups

**Timeframe:** 3 hours total

- 4 rounds of conversation (4 table rotations ~30 mins each)
- Synthesis and sharing group insights

**Organization:**

- 3 Dimensions from Work Plan + Guiding Principles
  - Land Access, Acquisition, and Ancestral Land Return
  - Land Use Governance and Sovereignty
  - Secure Land Tenure
  - Guiding Principles & Commitments

# Working Session Context: Approaches to Designing Policy Recommendations

- Goals and Vision Setting
- Institutionalize Progress
- Knowledge Building
- Modify or Implement Existing Programs or Legislation
- New Programs and Ideas
- Incentives and Regulatory Actions



# Working Session Context: Draft Report Outline

- Introduction; Overview of:
  - ALETF, key terms, & summary of recommendations
- Agricultural Land Equity Crisis in California; Sections on:
  - current trends in access and ownership, drivers and effects of inequity, & existing policies and strategies
- 3 dimensions of land equity. Each section includes:
  - Context and key challenges
  - Recommendations
  - Case studies
- Conclusion
- Appendix: Glossary

# Working Session Overview

## Round 1 (~30 minutes)

- 3-4 Task Force Members discuss the topic at your table
- Share your ideas and insights
- Table facilitator (SGC staff) will take notes on key points
- Task Force members take notes for full group discussion

## Table Rotation (~2-3 minutes)

- Move to a different table (SGC staff remains)

## Rounds 2 – 4 (~30 minutes each)

- Discuss the topic at your table
- Build on, share new insights, offer counter ideas, etc.

# Working Session Overview

## Shared Expectations:

- Share and listen
- Make space for each other
- Build on each other's contributions
- All contributions are valued
- Public can listen in; please wait for public comment to contribute

# Working Session Overview

## Tables:

- Guiding Principles and Commitments | **Camille**
- Land Access, Acquisition, and Ancestral Land Return | **Tessa**
- Land Use Governance and Sovereignty | **Caleb**
- Secure Land Tenure | **Sean**

# Working Session Prompting Questions:

- Who is served by this solution?
- Who is responsible for enacting this solution?
- What would need to happen for this solution to be feasible and effective?
- Should this solution be turned into a recommendation, and if so, how? What approach might be most effective?

# **Synthesis: Guiding Principles & Commitments**

# **Synthesis: Land Access, Acquisition, and Ancestral Land Return**

# **Synthesis: Land Use Governance and Sovereignty**



# Synthesis: Land Tenure

# Public Comment Process

## IN PERSON

- Submit the public comment card on the front table
- Separate form for each item
- Listen for your name and line up by the podium
- Staff will call your name to the podium
- Please adhere to **2-minute** time limit

## VIRTUAL

- Complete form at [sgc.ca.gov/meetings-events](https://sgc.ca.gov/meetings-events)
- Separate form for each item
- Listen for your name and “raise your hand” on Zoom
- Staff will unmute your microphone
- Please adhere to **2-minute** time limit

**Lunch Break**

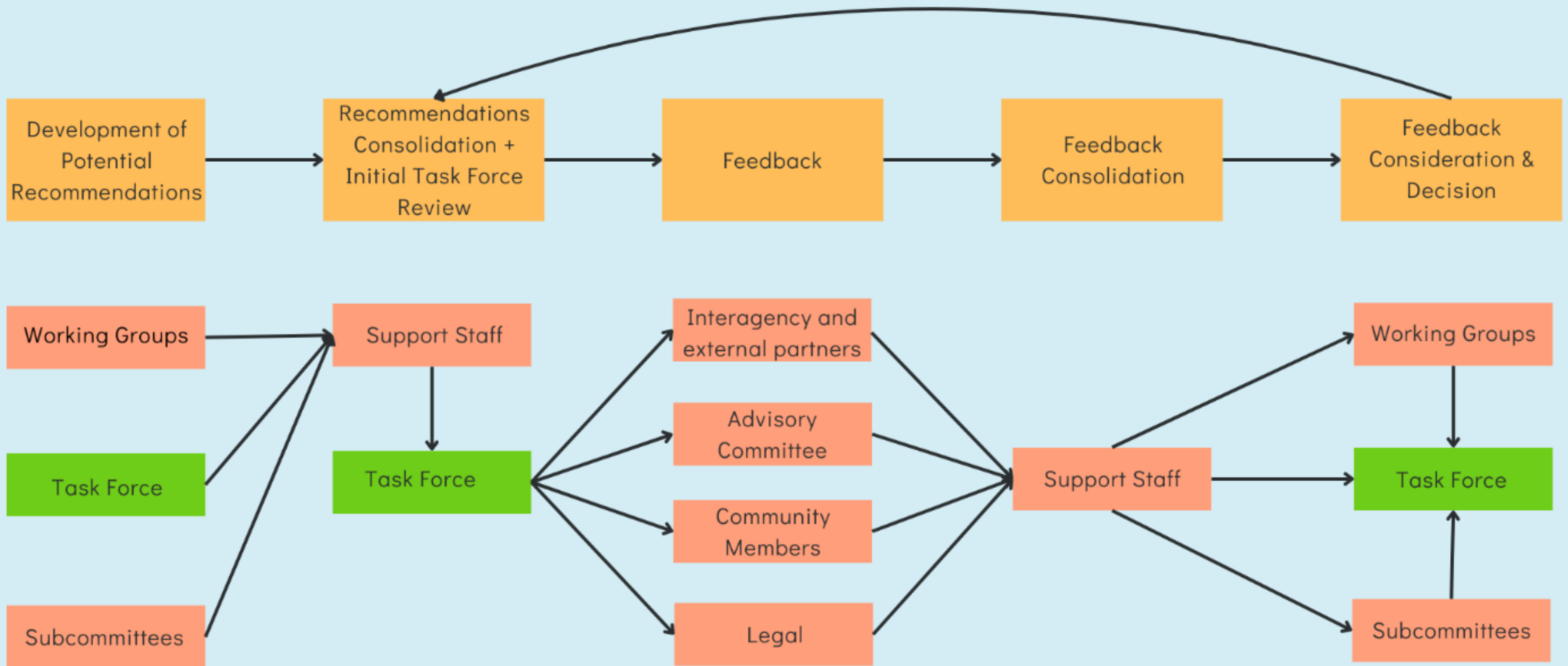
# **Work Planning and Next Steps**

# Work Planning and Next Steps

## Overview:

- Final report processes and timelines
- Advisory Committee
- Upcoming ALETF meetings
- Subcommittees and work groups
- Next steps

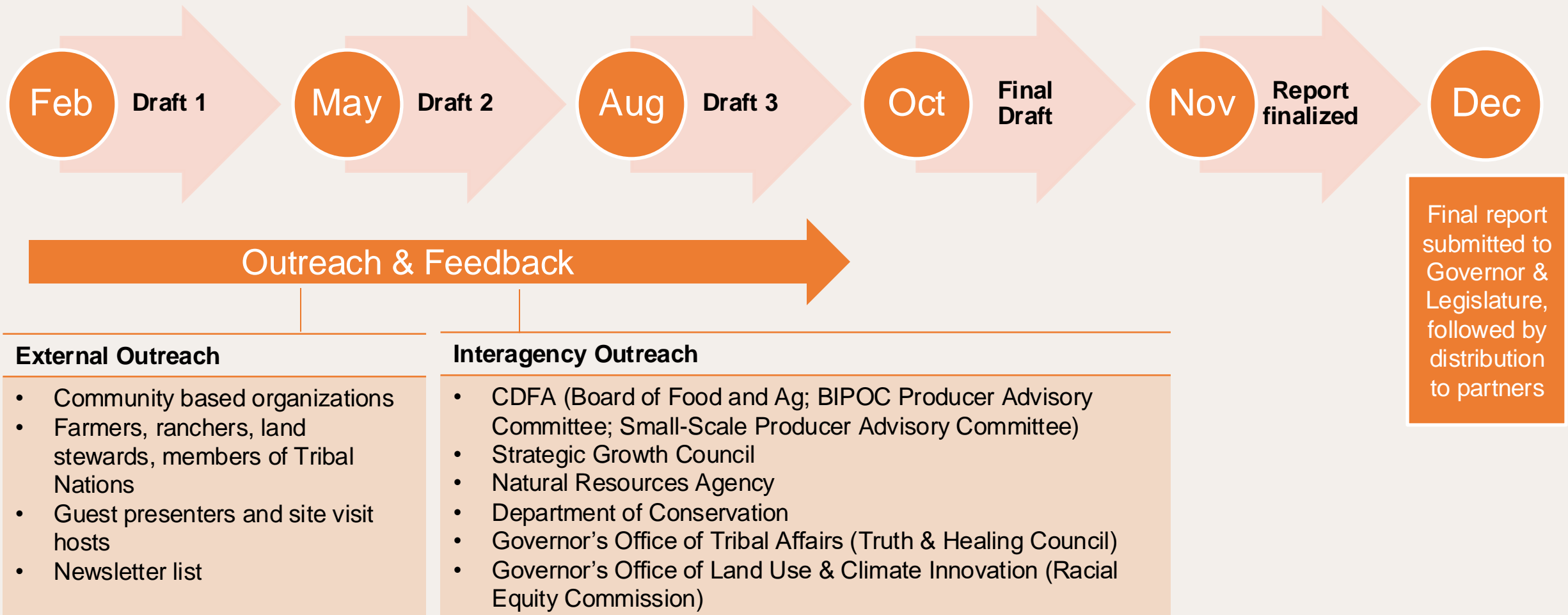
# ALETF Final Report Drafting Process



# Advisory Committee

- Goal to complement Task Force members' knowledge, experiences, and capacities
- 6-10 members with diverse backgrounds and skills
- Advisory Committee interest form currently open through Dec. 1, 2024

# Report drafting & outreach timeline: 2025





# ALETF Meetings

Meeting Dates in 2025	Location	Topics, Presenters, Materials
February 12 & 13	Southern CA	<ul style="list-style-type: none"><li>• Agricultural land markets and models to address barriers for under-resourced farmers and ranchers</li><li>• Review and discuss first draft of report</li></ul>
May 14 & 15	Northern CA	<ul style="list-style-type: none"><li>• Topics to address?</li><li>• Review and discuss second draft of report</li></ul>
August 13 & 14	TBD	<ul style="list-style-type: none"><li>• Review and discuss third draft of report</li></ul>
October	TBD	<ul style="list-style-type: none"><li>• Review and discuss final draft of report</li></ul>
November 13	TBD	<ul style="list-style-type: none"><li>• Finalize report</li></ul>
December	Sacramento	<ul style="list-style-type: none"><li>• Approve final report for submission</li></ul>

# Subcommittees & Working Groups

Subcommittee	Members	Working group(s) + members
Community Outreach	Burgueno, Franco, Hawkins, Zhou	None
Grants & Resources	Barraicua, Nakahara, Rittenhouse, Robinson, Schwartzman	<ul style="list-style-type: none"> <li>• Financing: Nakahara, Robinson</li> <li>• Grant program outcomes: Rittenhouse, Robinson</li> <li>• Tax laws and incentives: Nakahara, Schwartzman</li> </ul>
Land Access, Acquisition, & Ancestral Land Return	Brown, Burgueno, Dahlquist-Willard, Franco, Harlan, Hawkins, Nakahara, Robinson, Schwartzman	<ul style="list-style-type: none"> <li>• Land Back: Burgueno</li> <li>• Public lands: Harlan, Schwartzman</li> <li>• Land markets: Brown</li> <li>• Land succession strategies: Hawkins</li> </ul>
Land Tenure	Burgueno, Schwartzman	Land Tenure: Burgueno, Schwartzman
Land Use Governance & Sovereignty	Burgueno, Payán	Land Use Governance & Sovereignty: Burgueno, Payán
Sustaining Natural & Cultural Resources	Burgueno, Franco, Harlan, Rittenhouse	None

# Next Steps

- Staff begin first draft of final report based on Task Force conversations and guidance
- Continue work through subcommittees and working groups
- Outreach and engagement
  - Survey and interviews
  - Attend relevant events and distribute outreach materials
  - Begin planning listening sessions for February – September 2025
- ALETF meeting in February
  - Review first draft of final report

# **General Public Comment**

# Public Comment Process

## IN PERSON

- Submit the public comment card on the front table
- Separate form for each item
- Listen for your name and line up by the podium
- Staff will call your name to the podium
- Please adhere to **2-minute** time limit

## VIRTUAL

- Complete form at [sgc.ca.gov/meetings-events](https://sgc.ca.gov/meetings-events)
- Separate form for each item
- Listen for your name and “raise your hand” on Zoom
- Staff will unmute your microphone
- Please adhere to **2-minute** time limit

# Summarize, Action Items, Next Steps

- Summary of Actions taken
- Review of Action Items and follow up items
- Meeting notes, recording, and materials posted to:

<https://sgc.ca.gov/meetings/caletf/>

**Thank You!**