

## Project Area Mapping Tool Instructions

### Overview

Applicants must submit a map that indicates the Region within which they propose to work and the Communities of Focus within that regional boundary where they plan to focus their place-based activities. This document offers instructions on how to use the [Regional Climate Collaboratives \(RCC\) mapping tool](#) to select your Communities of Focus and Region and develop a map to submit with your RCC application. Email [CACE@sgc.ca.gov](mailto:CACE@sgc.ca.gov) if you need support or have questions about the mapping tool.

### How to Use the Regional Climate Collaboratives Mapping Tool

This mapping tool is meant to help applicants select a Region and Communities of Focus that meet RCC project area eligibility requirements and develop a map to submit with the RCC application. For more information on RCC project eligibility, see page 15 of the [RCC Round 2 Program Guidelines](#).

Please note that the project area selected in this tutorial is only meant to be an example and does not indicate any preference on SGC's behalf for the size, shape, or location of RCCs.

### Step 1: Selecting your Communities of Focus

The RCC mapping tool provides information on which census tracts meet the RCC under-resourced communities definition to help applicants select their Communities of Focus. The under-resourced communities definition for the RCC Program includes: CalEnviroScreen 4.0 Disadvantaged Communities; SB 535 Tribal Area Boundaries; AB 1550 Low Income Communities; and Disadvantaged Communities from the California Department of Water Resources. A Community of Focus could be a single census tract or tribal area or a cluster of census tracts or tribal areas. Please see pages 15-16 of the [RCC Round 2 Program Guidelines](#) for more information about RCC Project Area Requirements.

## Identifying and Analyzing Your Communities of Focus

Select the “**Census Tracts and Tribal Area Boundaries**” layer from the **Layer List**

**Regional Climate Collaboratives Mapping Tool**  
a mapping tool to select Communities of Focus for the RCC application

Layer List

- Layers
- Sub-Basins from the U.S Geological Survey's Watershed Boundary Dataset
- Integrated Regional Water Management Regions from the California Department of Water Resources
- Counties
- Regional Transportation Planning Agencies Regions
- Community Economic Resilience Fund Regions
- Air Basins from the California Air Resources Board
- Air Districts from the California Air Resources Board
- Sacramento - San Joaquin Primary and Secondary Delta
- Metropolitan Planning Organizations (MPOs)
- Council of Governments (COGs)
- AB1550 Low Income Communities
- Disadvantaged Communities from the California Department of Water Resources
- CalEnviroScreen 4.0 Disadvantaged Communities
- SB535 Tribal Area Boundaries
- Census Tracts and Tribal Area Boundaries**

Communities of Focus Calculator

Communities of Focus

- Not Under-resourced ...
- Tribal Under-resourc...
- Under-resourced Cens...

Category	Color
Under-resourced Census Tracts	Blue
Not Under-resourced Census Tracts	Orange
Tribal Under-resourced Areas	Red
Under-resourced Census Tracts	Green

## Regional Climate Collaboratives Program Round 2 Application Resource

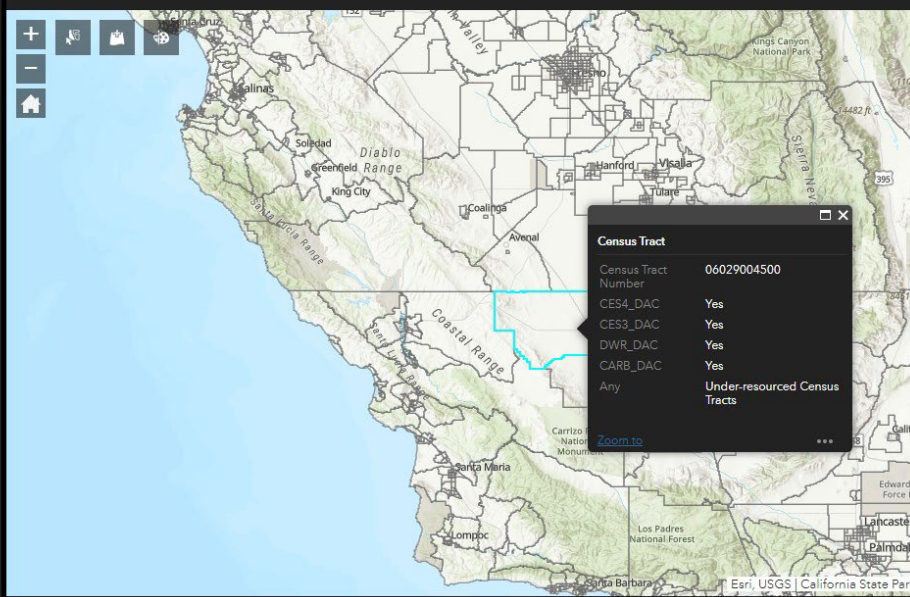
- You can click on the census tract or tribal area boundary to learn more information about it.

**Regional Climate Collaboratives Mapping Tool**  
a mapping tool to select Communities of Focus for the RCC application

Layer List

**Layers**

- Sub-Basins from the U.S Geological Survey's Watershed Boundary Dataset
- Integrated Regional Water Management Regions from the California Department of Water Resources
- Counties
- Regional Transportation Planning Agencies Regions
- Community Economic Resilience Fund Regions
- Air Basins from the California Air Resources Board
- Air Districts from the California Air Resources Board
- Sacramento - San Joaquin Primary and Secondary Delta
- Metropolitan Planning Organizations (MPOs)
- Council of Governments (COGs)
- AB1550 Low Income Communities
- Disadvantaged Communities from the California Department of Water Resources
- CalEnviroScreen 4.0 Disadvantaged Communities
- SB535 Tribal Area Boundaries
- Census Tracts and Tribal Area Boundaries



**Census Tract**

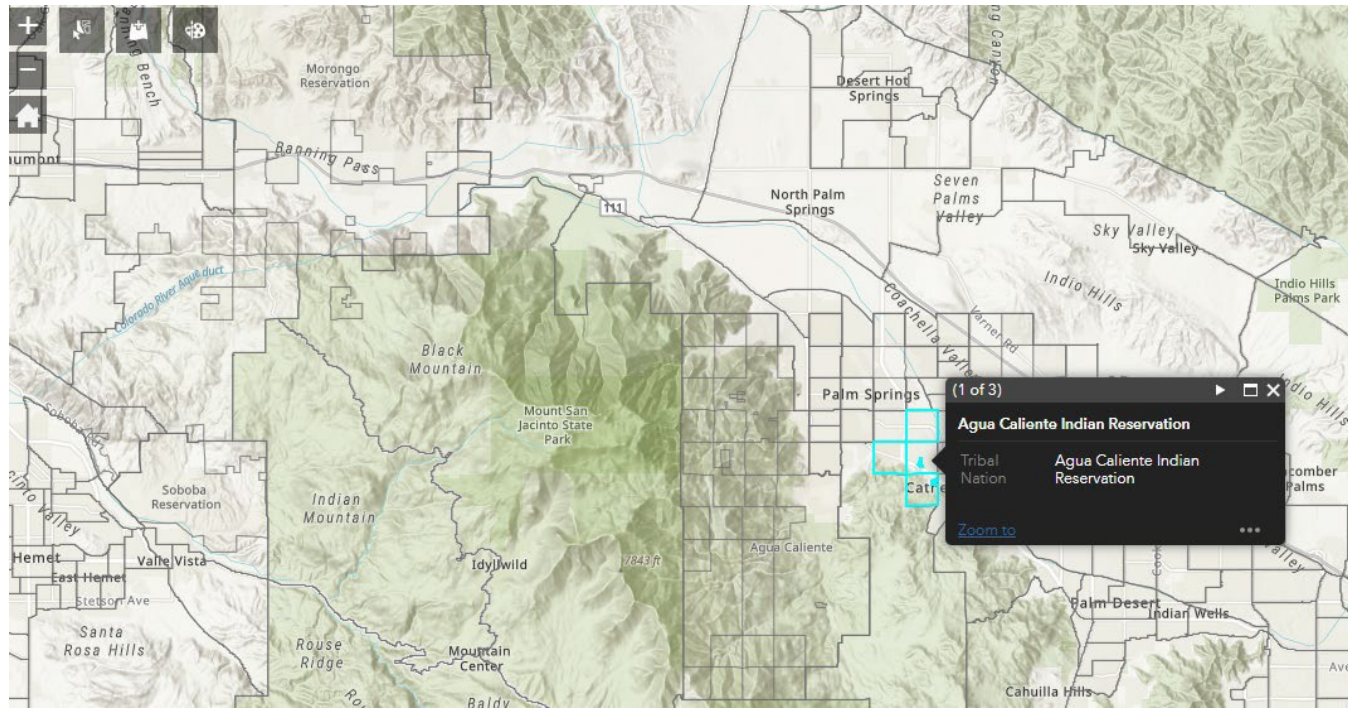
Census Tract Number	06029004500
CES4_DAC	Yes
CES3_DAC	Yes
DWR_DAC	Yes
CARB_DAC	Yes
Any	Under-resourced Census Tracts

Zoom to

Communities of Focus Calculator

Communities of Focus

## Regional Climate Collaboratives Program Round 2 Application Resource





## Regional Climate Collaboratives Program Round 2 Application Resource

Use the search bar in the upper right-hand corner of the map to locate your project area. You can also use the zoom tools in the upper left-hand corner to locate your project area.

Open the select tool located in the upper-left hand corner (circled in red below).

- You can use your mouse to move the select toolbox around.

**Regional Climate Collaboratives Mapping Tool**  
a mapping tool to select Communities of Focus for the RCC application

The screenshot displays the Regional Climate Collaboratives Mapping Tool interface. On the left, there is a Layer List with various categories and their corresponding checkboxes. The main map area shows a geographical view of California with various regions and communities highlighted. A red circle highlights the select tool icon in the upper-left corner of the map area. Below the map, there is a Communities of Focus Calculator section with a pie chart and a legend.

**Layer List**

- Sub-Basins from the U.S. Geological Survey's Watershed Boundary Dataset
- Integrated Regional Water Management Regions from the California Department of Water Resources
- Counties
- Regional Transportation Planning Agencies Regions
- Community Economic Resilience Fund Regions
- Air Basins from the California Air Resources Board
- Air Districts from the California Air Resources Board
- Sacramento - San Joaquin Primary and Secondary Delta
- Metropolitan Planning Organizations (MPOs)
- Council of Governments (COGs)
- AB1550 Low Income Communities
- Disadvantaged Communities from the California Department of Water Resources
- CalEnviroScreen 4.0 Disadvantaged Communities
- S8535 Tribal Area Boundaries
- Census Tracts and Tribal Area Boundaries

**Communities of Focus Calculator**

Communities of Focus

Under-resourced Census Tracts    Not Under-resourced Census Tracts

Not Under-resourced ...    Tribal Under-resourced...    Under-resourced Cens...    Tribal Under-resourced Areas

# Regional Climate Collaboratives Program Round 2 Application Resource

## Regional Climate Collaboratives Mapping Tool

a mapping tool to select Communities of Focus for the RCC application

**Layer List**

- Sub-Basins from the U.S Geological Survey's Watershed Boundary Dataset
- Integrated Regional Water Management Regions from the California Department of Water Resources
- Counties
- Regional Transportation Planning Agencies Regions
- Community Economic Resilience Fund Regions
- Air Basins from the California Air Resources Board
- Air Districts from the California Air Resources Board
- Sacramento - San Joaquin Primary and Secondary Delta
- Metropolitan Planning Organizations (MPOs)
- Council of Governments (COGs)
- AB1550 Low Income Communities
- Disadvantaged Communities from the California Department of Water Resources
- CalEnviroScreen 4.0 Disadvantaged Communities
- SB535 Tribal Area Boundaries
- Census Tracts and Tribal Area Boundaries

**Select**

Layer

- Air Basins from the California Air Resources Board
- Air Districts from the California Air Resources Board
- Sacramento - San Joaquin Primary and Secondary Delta
- Metropolitan Planning Organizations (MPOs)
- Council of Governments (COGs)
- SB535 Tribal Area Boundaries
- Census Tracts and Tribal Area Boundaries

Communities of Focus Calculator

Communities of Focus



## Regional Climate Collaboratives Program Round 2 Application Resource

Click the rectangular button that says “select” within the select toolbox and choose “select by rectangle” or “select by polygon”.

- Select by rectangle allows you to draw a rectangular shape over your desired Communities of Focus.
- Select by polygon allows you to draw your own shape over your desired Communities of Focus.

**Regional Climate Collaboratives Mapping Tool**  
a mapping tool to select Communities of Focus for the RCC application

**Layer List**

**Layers**

- Sub-Basins from the U.S Geological Survey's Watershed Boundary Dataset
- Integrated Regional Water Management Regions from the California Department of Water Resources
- Counties
- Regional Transportation Planning Agencies Regions
- Community Economic Resilience Fund Regions
- Air Basins from the California Air Resources Board
- Air Districts from the California Air Resources Board
- Sacramento - San Joaquin Primary and Secondary ...
- Metropolitan Planning Organizations (MPOs) Delta
- Metropolitan Planning Organizations (MPOs)
- Council of Governments (COGs)
- AB1550 Low Income Communities
- Disadvantaged Communities from the California Department of Water Resources
- CalEnviroScreen 4.0 Disadvantaged Communities
- SB535 Tribal Area Boundaries
- Census Tracts and Tribal Area Boundaries

**Select**

Select

Clear

Layer

- Select by rectangle
- Select by polygon

**Communities of Focus Calculator**

**Communities of Focus**

Under-resourced Census Tracts

Not Under-resourced Cens

Tribal Under-resourced Areas

Under-resourced Cens

Tribal Under-resourced Areas



## Regional Climate Collaboratives Program Round 2 Application Resource

Select the **“Census Tract and Tribal Area Boundaries”** layer from the select toolbox (underlined in red below).

**Regional Climate Collaboratives Mapping Tool**  
a mapping tool to select Communities of Focus for the RCC application

Layer List

Layers

- Sub-Basins from the U.S Geological Survey's Watershed Boundary Dataset
- Integrated Regional Water Management Regions from the California Department of Water Resources
- Counties
- Regional Transportation Planning Agencies Regions
- Community Economic Resilience Fund Regions
- Air Basins from the California Air Resources Board
- Air Districts from the California Air Resources Board
- Sacramento - San Joaquin Primary and Secondary Delta
- Metropolitan Planning Organizations (MPOs)
- Council of Governments (COGs)
- AB1550 Low Income Communities
- Disadvantaged Communities from the California Department of Water Resources
- CalEnviroScreen 4.0 Disadvantaged Communities
- SB535 Tribal Area Boundaries
- Census Tracts and Tribal Area Boundaries

Select

Select Clear

Layer

- Air Basins from the California Air Resources Board
- Air Districts from the California Air Resources Board
- Sacramento - San Joaquin Primary and Secondary Delta
- Metropolitan Planning Organizations (MPOs)
- Council of Governments (COGs)
- SB535 Tribal Area Boundaries
- Census Tracts and Tribal Area Boundaries

Communities of Focus Calculator

Communities of Focus

Under-resourced Census Tracts Not Under-resourced Census Tracts



## Regional Climate Collaboratives Program Round 2 Application Resource

Click, hold down, and drag your mouse over your desired census tracts and/or tribal areas. Double click to complete your selection.

- You can hold down the shift key while selecting your census tracts or tribal areas and to use that are not contiguous.

**Regional Climate Collaboratives Mapping Tool**  
A mapping tool to select Communities of Focus for the RCC application

Layer List

Layers

- Sub-Basins from the U.S Geological Survey's Watershed Boundary Dataset
- Integrated Regional Water Management Regions from the California Department of Water Resources
- Counties
- Regional Transportation Planning Agencies Regions
- Community Economic Resilience Fund Regions
- Air Basins from the California Air Resources Board
- Air Districts from the California Air Resources Board
- Sacramento - San Joaquin Primary and Secondary Delta
- Metropolitan Planning Organizations (MPOs)
- Council of Governments (COGs)
- AB1550 Low Income Communities
- Disadvantaged Communities from the California Department of Water Resources
- CalEnviroScreen 4.0 Disadvantaged Communities
- SB535 Tribal Area Boundaries
- Census Tracts and Tribal Area Boundaries

Communities of Focus Calculator

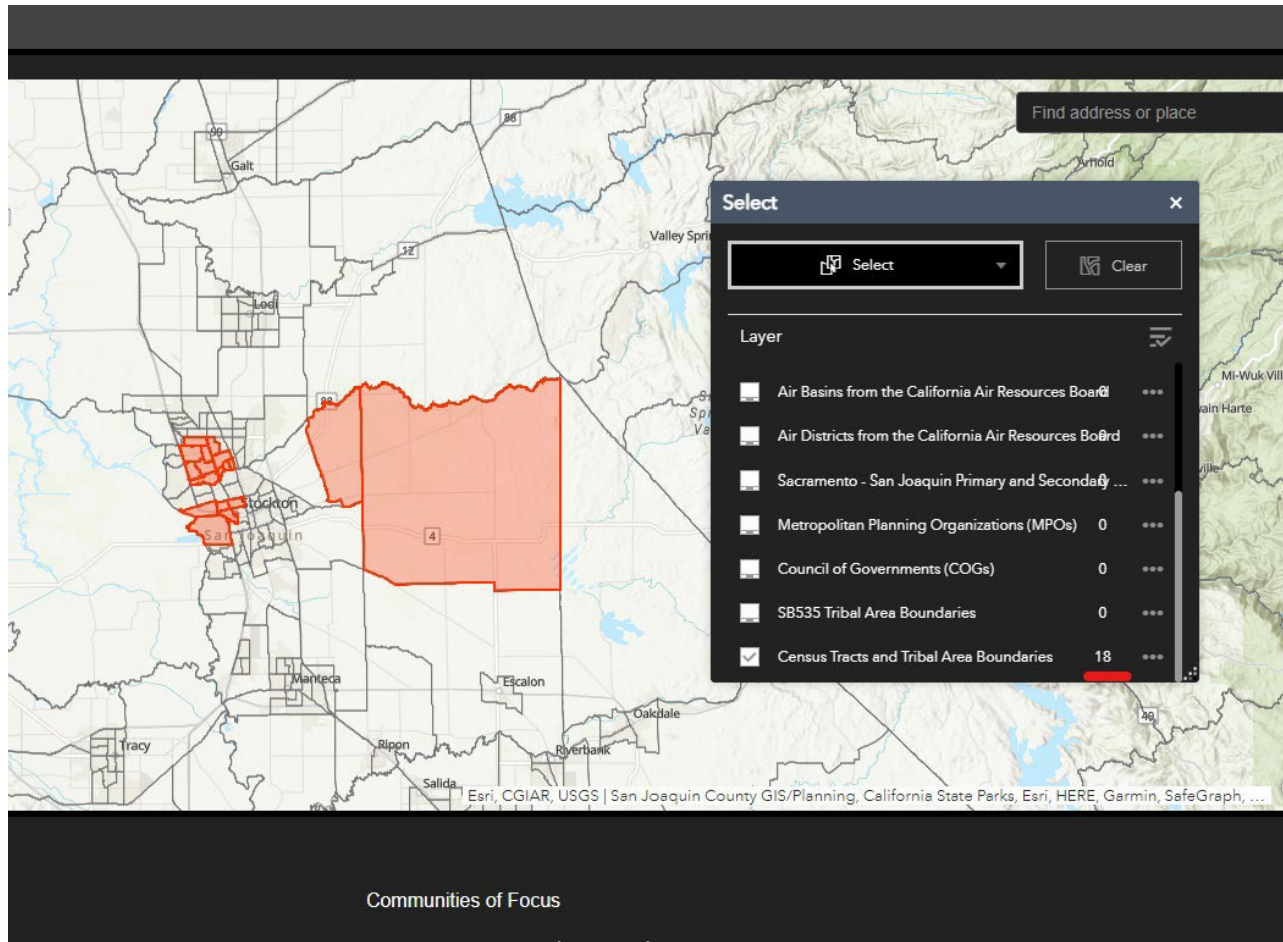
Communities of Focus

- Not Under-resourced ...
- Under-resourced Cens...

Under-resourced Census Tracts

## Regional Climate Collaboratives Program Round 2 Application Resource

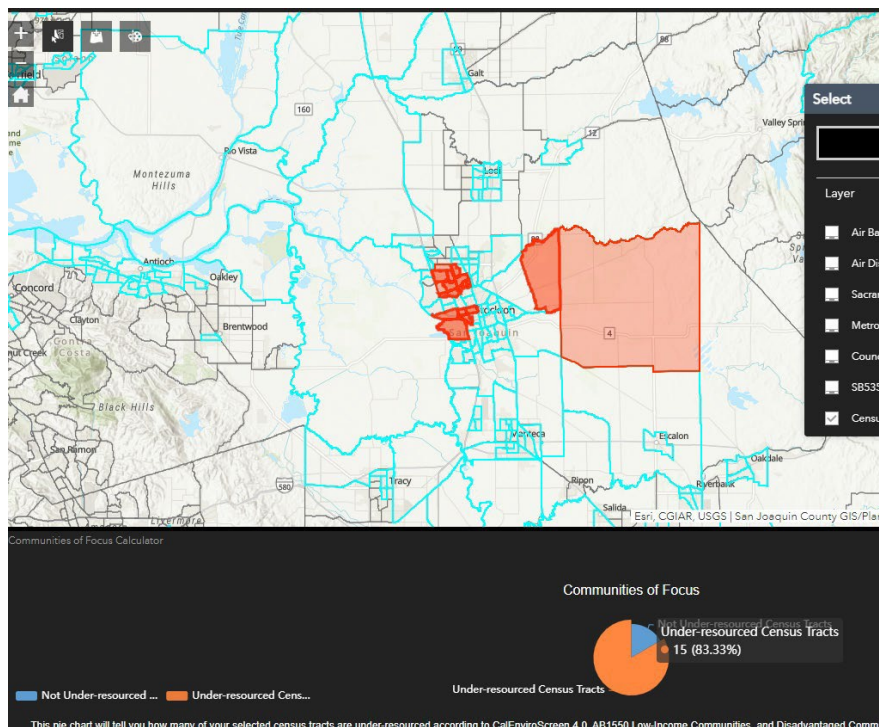
Check the select toolbox to see how many census tracts and/or tribal lands you selected to indicate in your RCC Application. The number of Communities of focus you selected will be to the right of the **“Census Tracts and Tribal Area Boundaries”** layer in the select toolbox (underlined in red below).



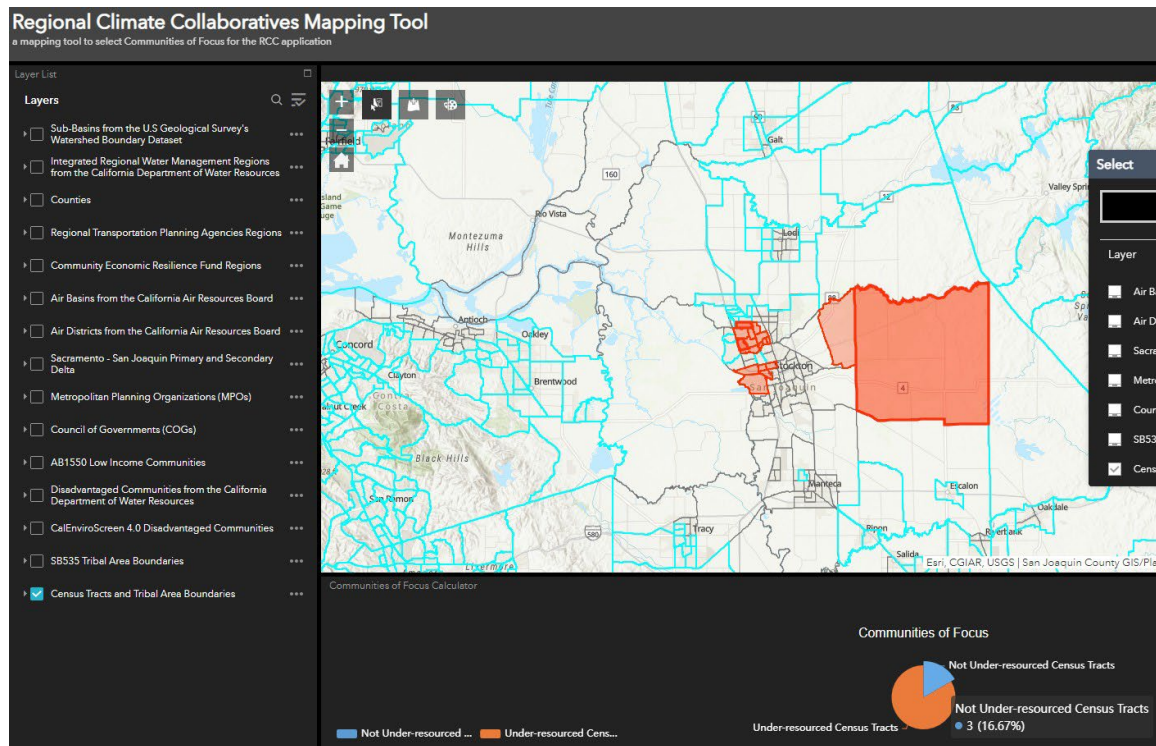
## Regional Climate Collaboratives Program Round 2 Application Resource

Once you have selected all your Communities of Focus, hover your mouse over the “**Communities of Focus Calculator**” pie chart underneath the map and use your mouse to toggle between the amount of under-resourced and not under-resourced communities within your selection.

- Hovering over or clicking on the under-resourced and not under-resourced census tracts in the pie chart or legend will highlight the outlines of unselected census tracts and/or tribal area boundaries in blue. Your selection will appear shaded in red.
- Tribal area boundaries that are included in this tool are considered under-resourced communities and will count towards the total 75% project area threshold for eligibility criteria #1 found on page 9 in the RCC Round 2 Guidelines.
- If you would like to select Tribal Lands that are not included in the SB535 Tribal Area Boundaries layer and wish to use eligibility criteria #2 to meet the RCC project area thresholds, you can select the census tracts that correspond most closely to the Tribal Lands you wish to include. You will then need to indicate in your RCC application how the selected area meets the definition of Tribal Lands on pages 16-17 of the RCC Round 2 Guidelines in order for those lands to count towards the RCC Project Area threshold.



## Regional Climate Collaboratives Program Round 2 Application Resource



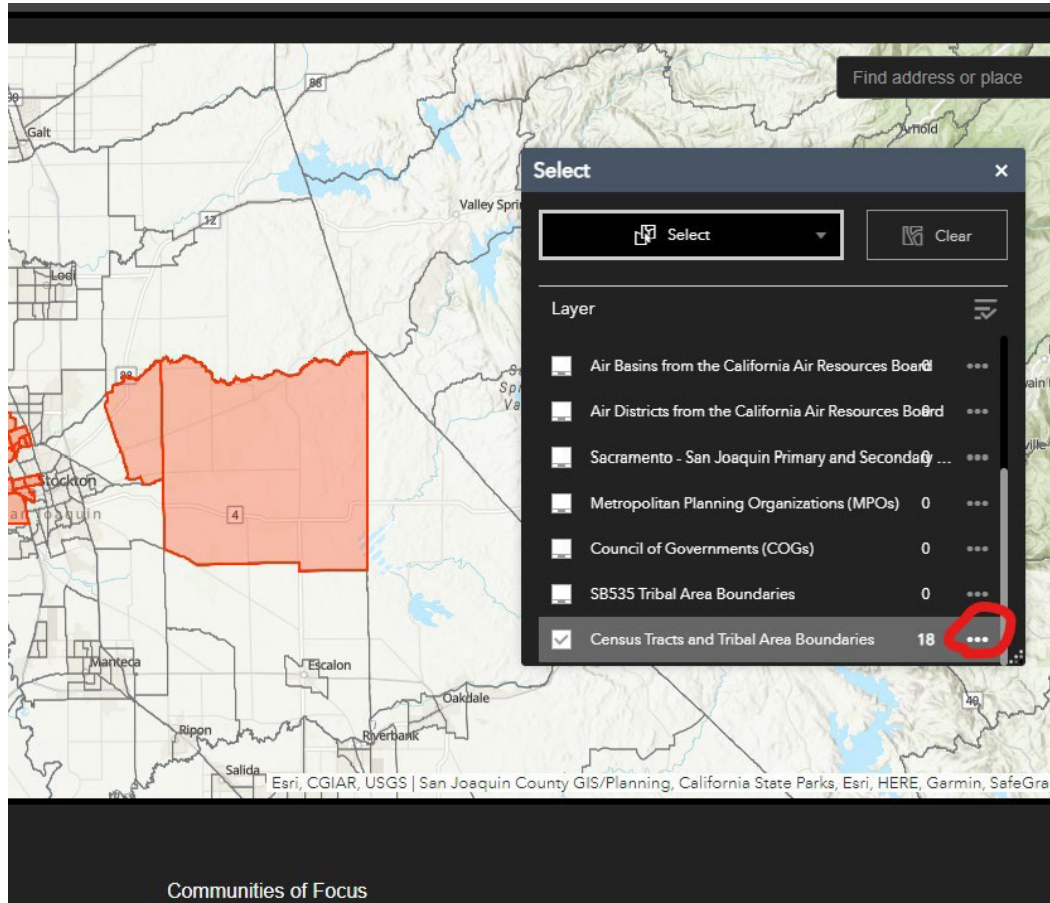
It is recommended that you screenshot your results on the “**Communities of Focus Calculator**” pie chart to submit with your application materials.

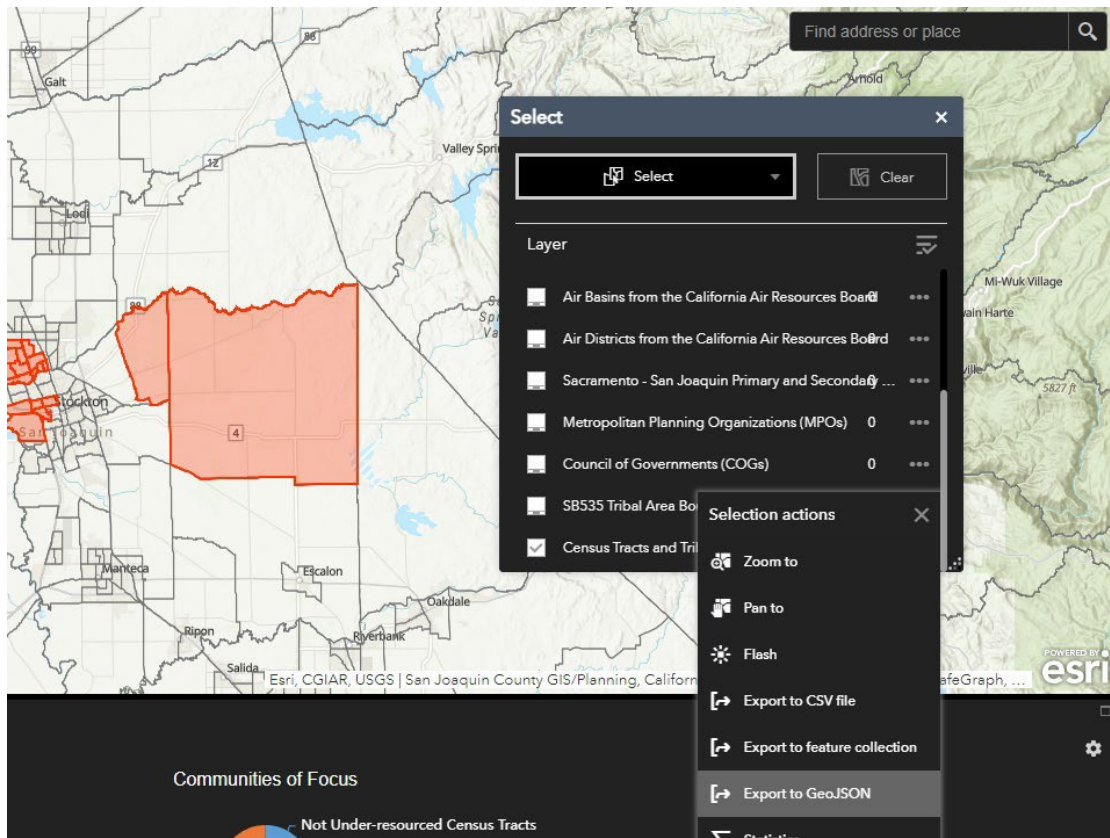


### Exporting Your Communities of Focus for Your Application

Click the three dots (circled in red below) next to the “**Census Tract and Tribal Area Boundaries**” layer in the select toolbox to open the Select drop down menu.

- Choose Export to GeoJSON from the menu. You will submit this GeoJSON file as a part of your application materials. We recommend renaming the file with a descriptive name when saving it to ensure it is easy to find.





Go to the Add Data tool (circled in red below) and select File.

### Regional Climate Collaboratives Mapping Tool

a mapping tool to select Communities of Focus for the RCC application

**Layer List**

- Sub-Basins from the U.S Geological Survey's Watershed Boundary Dataset
- Integrated Regional Water Management Regions from the California Department of Water Resources
- Counties
- Regional Transportation Planning Agencies Regions
- Community Economic Resilience Fund Regions
- Air Basins from the California Air Resources Board
- Air Districts from the California Air Resources Board
- Sacramento - San Joaquin Primary and Secondary Delta
- Metropolitan Planning Organizations (MPOs)
- Council of Governments (COGs)
- AB1550 Low Income Communities
- Disadvantaged Communities from the California Department of Water Resources
- CalEnviroScreen 4.0 Disadvantaged Communities
- SB535 Tribal Area Boundaries
- Census Tracts and Tribal Area Boundaries

Communities of Focus Calculator

Communities of Focus

## Regional Climate Collaboratives Program Round 2 Application Resource

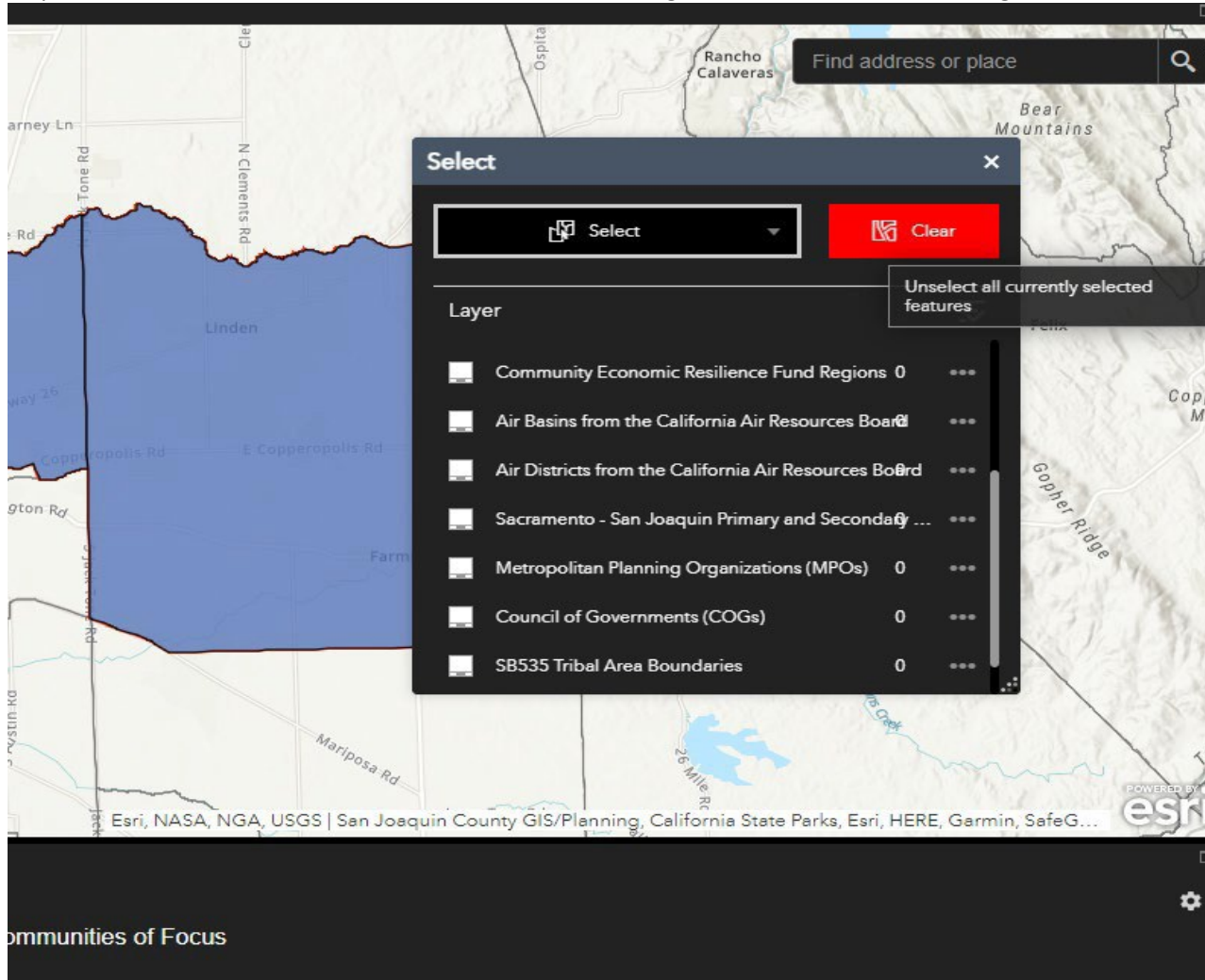
The screenshot displays a GIS application interface. On the left, a 'Layer List' panel shows various data layers. The 'Census Tracts and Tribal Area Boundaries' layer is selected with a checkmark. The main map area shows a geographic region with several layers overlaid, including a red-shaded area. An 'Add Data' dialog box is open in the center, with the 'File' tab selected. The dialog includes a search bar, a 'Generalize features for web display' checkbox (checked), and a 'DROP OR BROWSE' section with a 'BROWSE' button. The map background shows labels for cities like Concord, San Ramon, and Tracy, and features like the 580 highway.



## Regional Climate Collaboratives Program Round 2 Application Resource

Drop in or browse your files to add your Communities of Focus GeoJSON file.

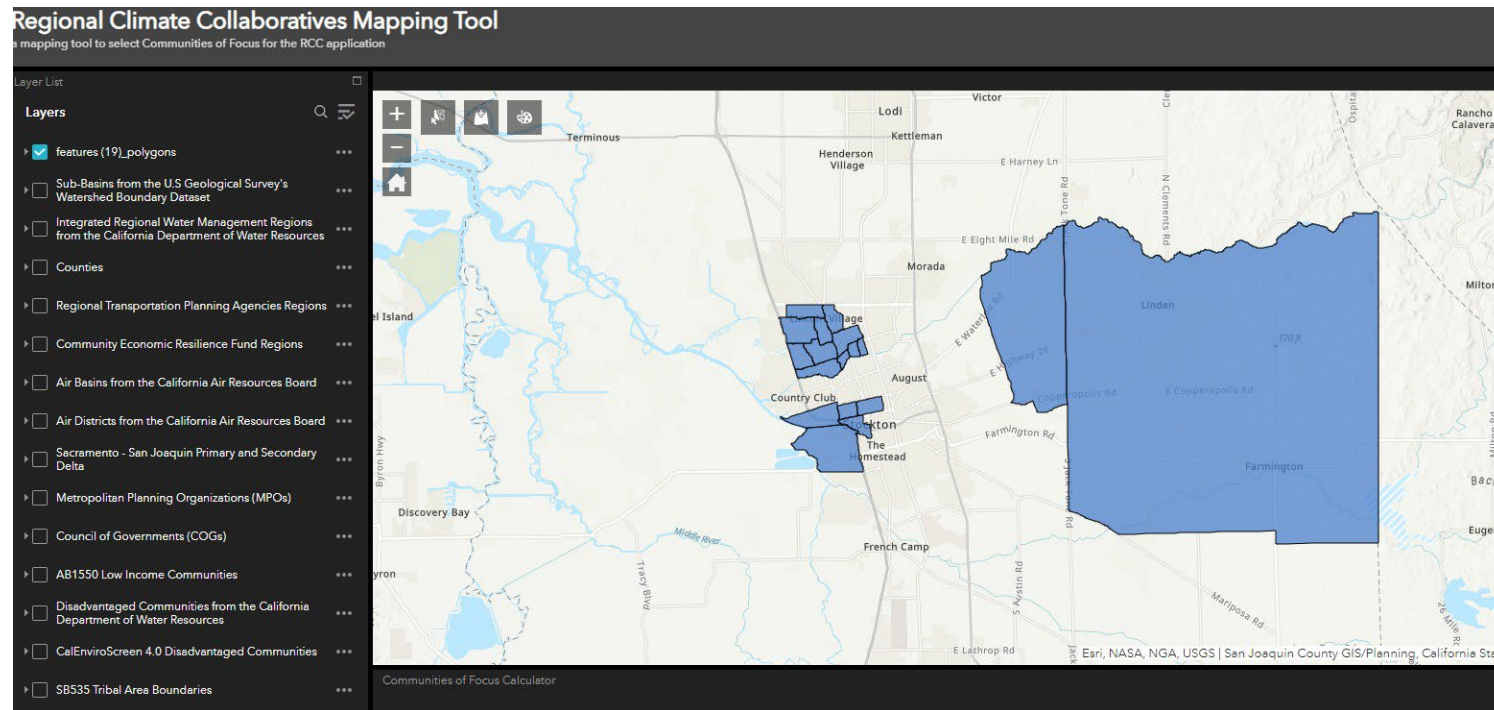
Open the select tool and click the “clear selection” rectangle next to the “select” rectangle.



## Regional Climate Collaboratives Program Round 2 Application Resource

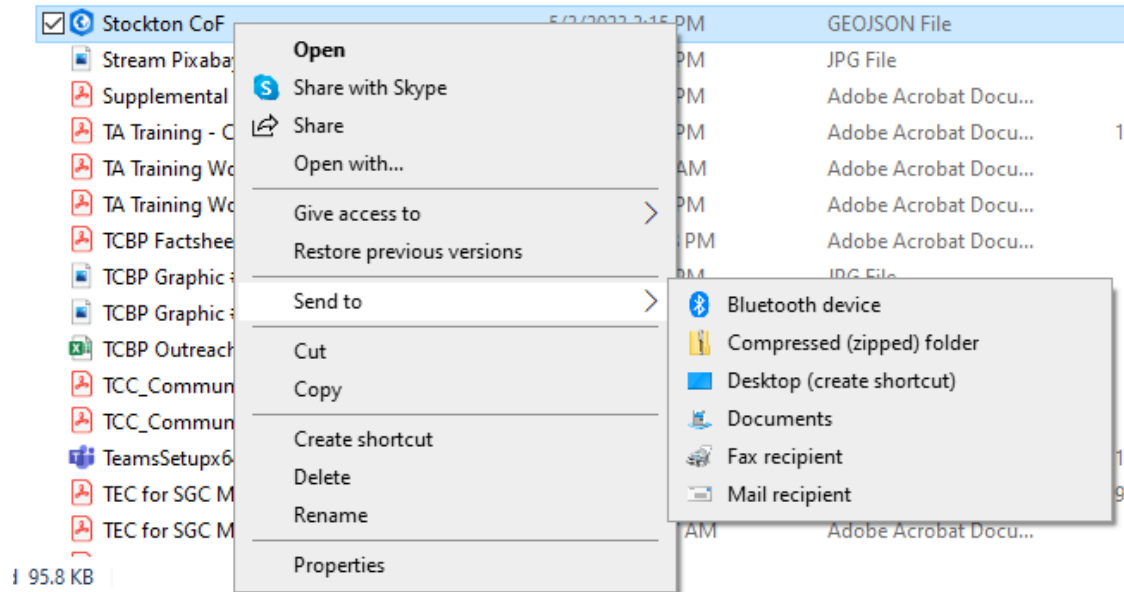
Unselect the “**Census Tracts and Tribal Area Boundaries**” layer from the select toolbox.

Congratulations! You have selected your Communities of Focus.



To submit your Communities of Focus in your final application, you will need to add your Communities of Focus GeoJSON file into a zip file.

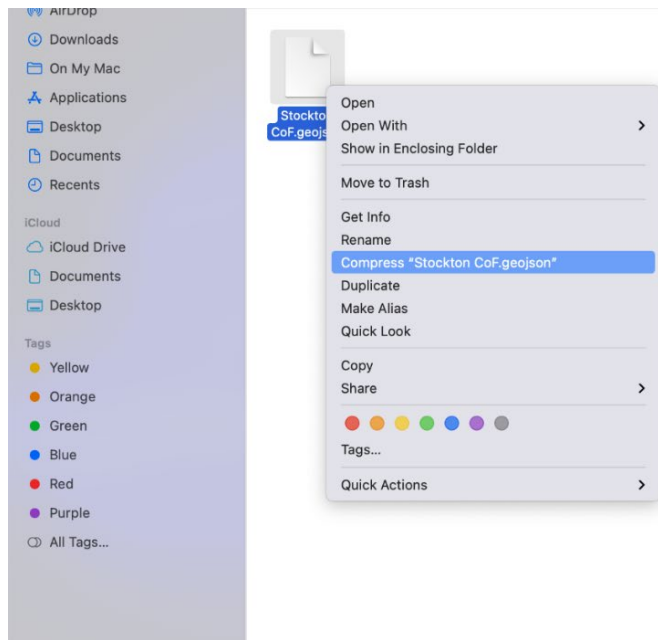
- For windows users, find your Communities of Focus GeoJSON file and right click it. Choose “send to” from the drop-down menu and then choose compressed (zipped) folder.



- For Mac users, find your Communities of Focus GeoJSON file and right click it. Chose “compress” from the drop-down menu.

## Regional Climate Collaboratives Program Round 2 Application Resource

---





## Step 2: Selecting Your Region

The RCC mapping tool offers a selection of data layers that applicants can use to define the Region for their RCC. Please note that applicants are not limited to using the data layers offered in this tool and may select any regional boundary that meets the RCC program project area eligibility criteria (See [RCC Round 2 Program Guidelines](#) page 15).

The optional regional boundaries that the RCC mapping tool offers include:

- Air Basins from the California Air Resources Board
- Air Districts from the California Air Resources Board
- Community Economic Resilience Fund Regions
- Councils of Governments
- Counties
- Integrated Regional Water Management Regions from the California Department of Water Resources
- Metropolitan Planning Organizations
- Regional Transportation Planning Agencies Regions
- Sacramento – San Joaquin Primary and Secondary Delta
- Sub-Basins from the U.S. Geological Survey’s Watershed Boundary Dataset

Applicants who wish to select a regional boundary that is not included in this tool’s data layers may upload their own regional boundary to this tool or draw their own boundaries using the draw tool. See below for guidance on all these methods for selecting a regional boundary.

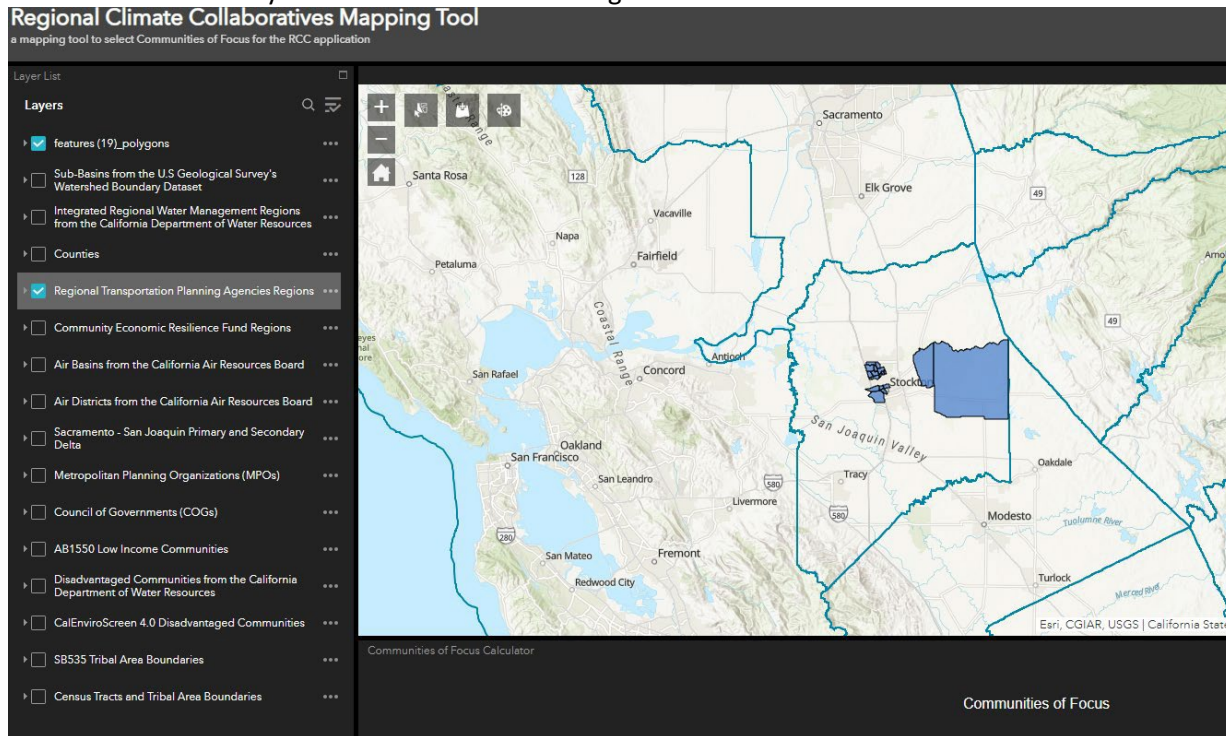
**If you are using a Pre-Set Regional Boundary in the RCC Mapping Tool:**

Go to the Layer List on the left and unselect the “Census Tract and Tribal Area Boundaries” layer.

- Ensure that your Communities of Focus GeoJSON file is still selected on the layer list.

Select the regional boundary layer from the **Layer List** that corresponds to the type of boundary you would like to use for your RCC Region.

- You can use your mouse to click on the regional boundaries for more information.



## Regional Climate Collaboratives Program Round 2 Application Resource

### Regional Climate Collaboratives Mapping Tool

a mapping tool to select Communities of Focus for the RCC application

Layer List

**Layers**

- features (19\_polygons)
- Sub-Basins from the U.S Geological Survey's Watershed Boundary Dataset
- Integrated Regional Water Management Regions from the California Department of Water Resources
- Counties
- Regional Transportation Planning Agencies Regions
- Community Economic Resilience Fund Regions
- Air Basins from the California Air Resources Board
- Air Districts from the California Air Resources Board
- Sacramento - San Joaquin Primary and Secondary Delta
- Metropolitan Planning Organizations (MPOs)
- Council of Governments (COGs)
- AB1550 Low Income Communities
- Disadvantaged Communities from the California Department of Water Resources
- CalEnviroScreen 4.0 Disadvantaged Communities
- SB535 Tribal Area Boundaries
- Census Tracts and Tribal Area Boundaries

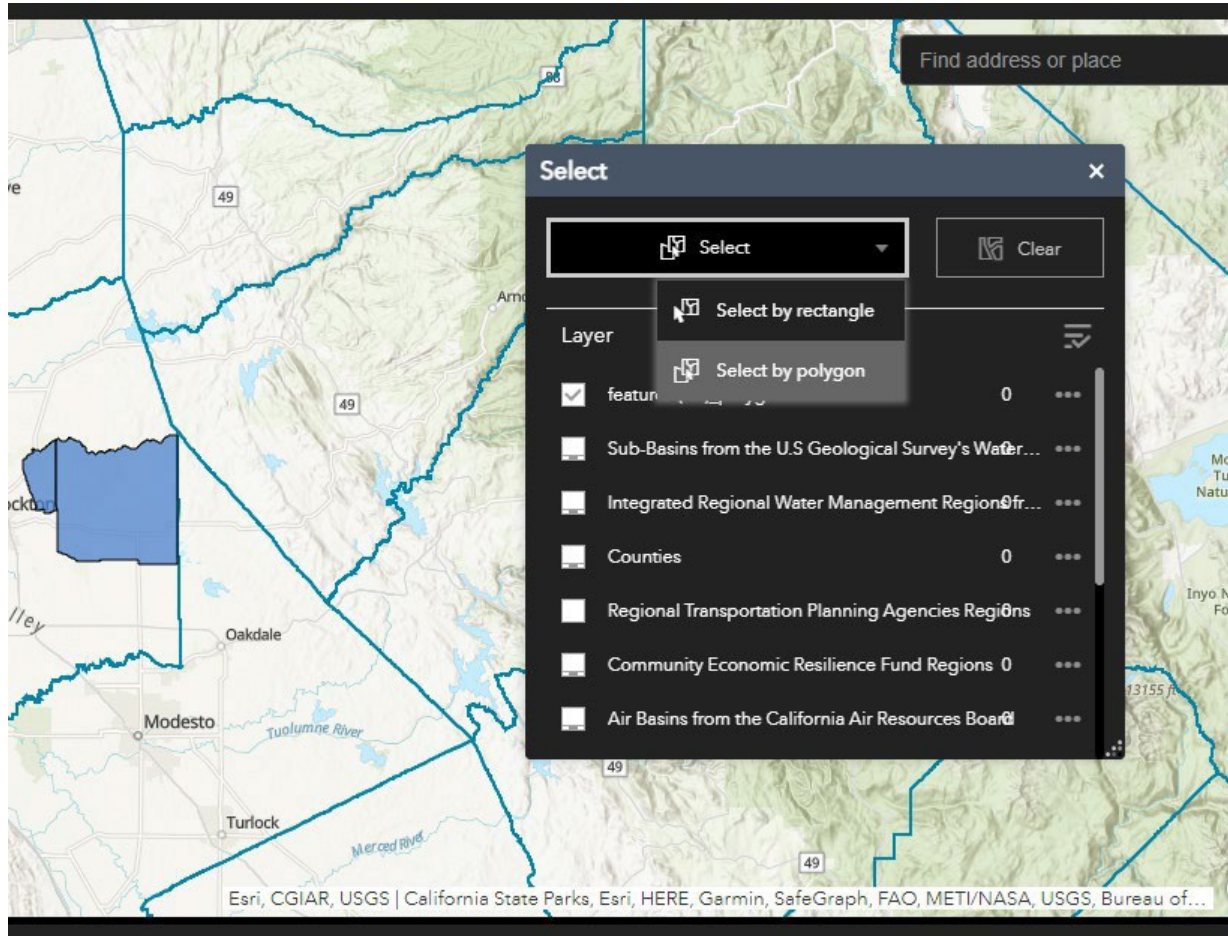
Communities of Focus Calculator

Communities of Focus

## Regional Climate Collaboratives Program Round 2 Application Resource

Open the select tool in the upper left-hand corner and click the rectangular button that says "select".

- Click on the dropdown arrow to choose either select by rectangle, which allows you to draw a rectangular shape to select your Region, or select by polygon, which allows you to draw your own kind of shape to select your Region.

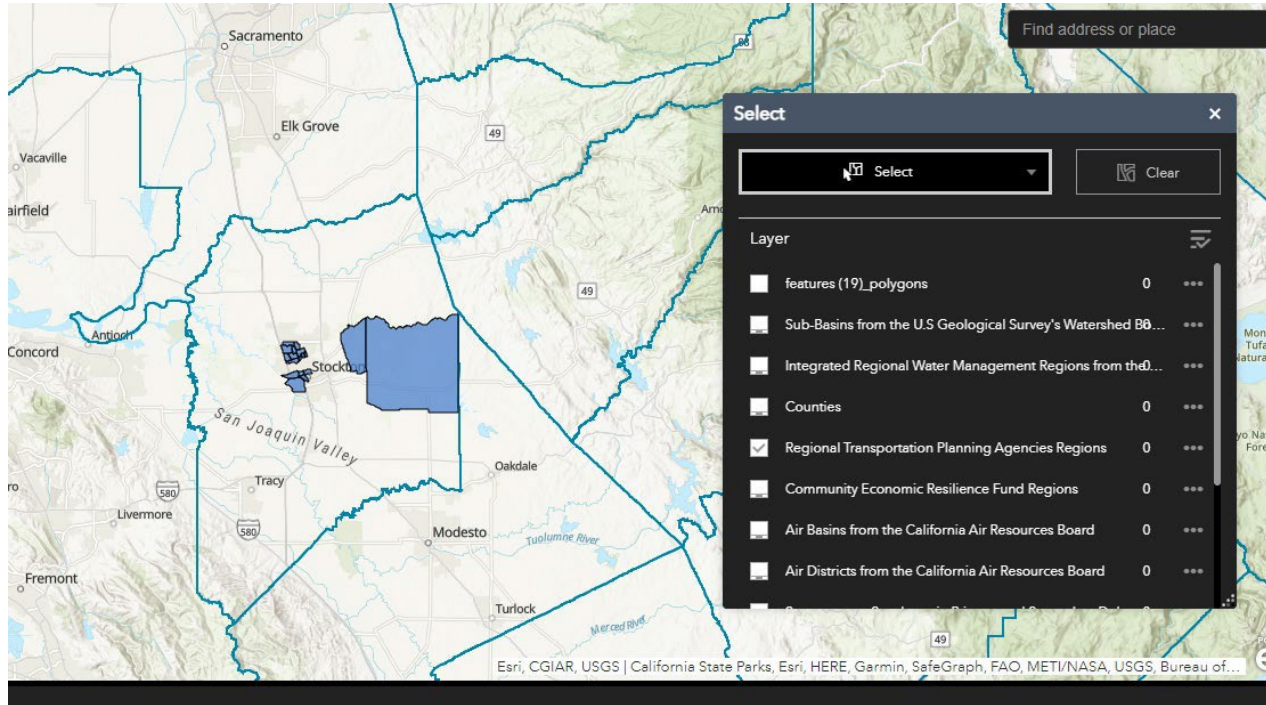


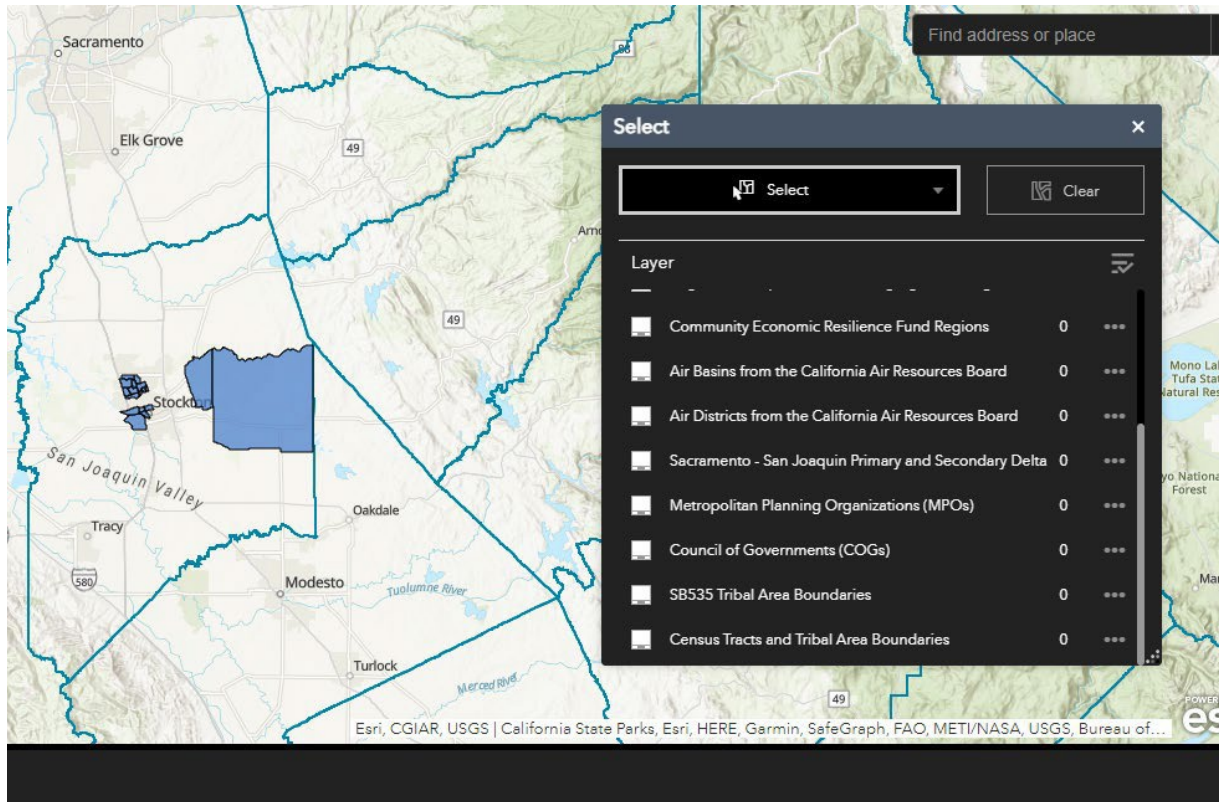


## Regional Climate Collaboratives Program Round 2 Application Resource

From the **Layer List** in the Select toolbox, select the pre-set regional boundary that you would like to use. In the Select toolbox, ensure that:

- the “Census Tracts and Tribal Area Boundaries” layer is unselected.
- your Communities of Focus GeoJSON file is unselected.

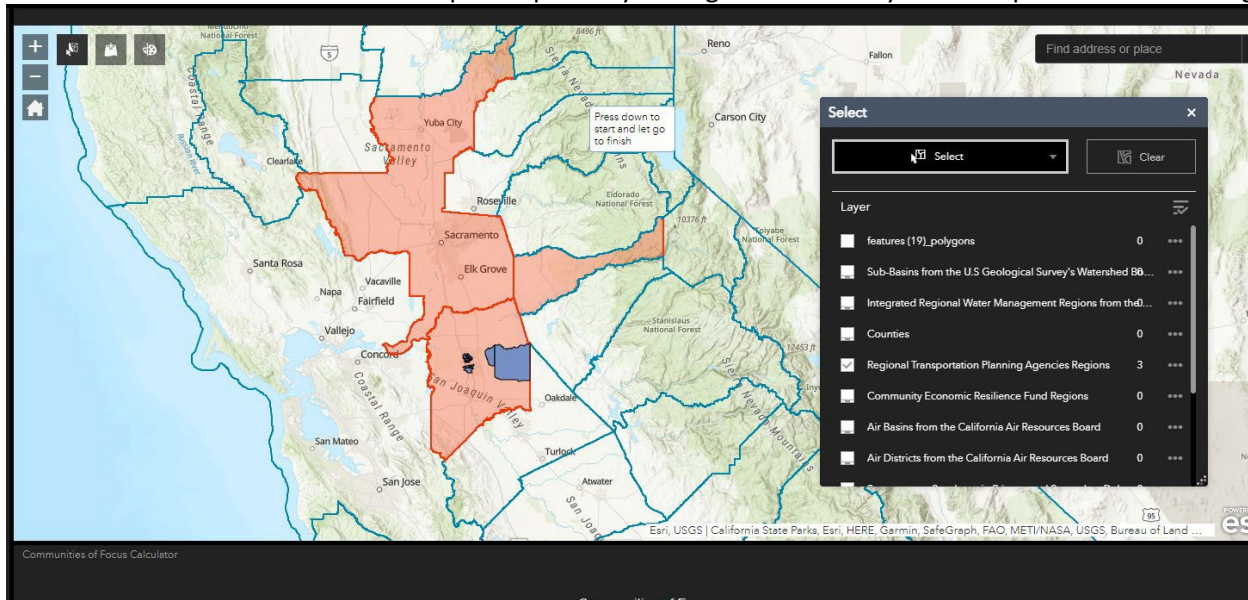




## Regional Climate Collaboratives Program Round 2 Application Resource

Click on your selected Region and use your mouse to click and drag the selection tool over your region. Your selection will light up red.

- You can select multiple shapes for your regional boundary if the shapes make one contiguous region.



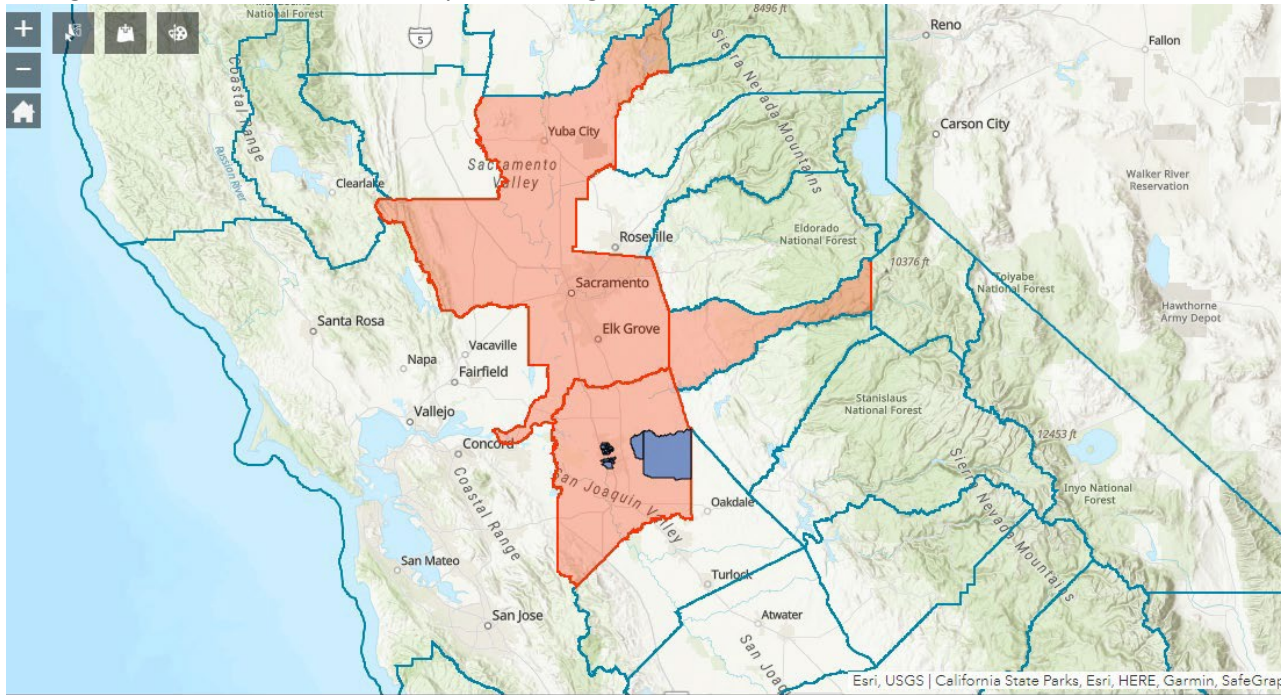
To hide the Select toolbox, click the X at the top right of its pop-up window or click the select tool in the top left of the map window.

Screenshot your Region and Communities of Focus. This will serve as your project area map.

- For Windows users: Press and hold shift, Windows key, and S key at once to screenshot.
- For Mac users: Press and hold shift, command, 3 at once to screenshot.



Congratulations! You have selected your RCC Region.

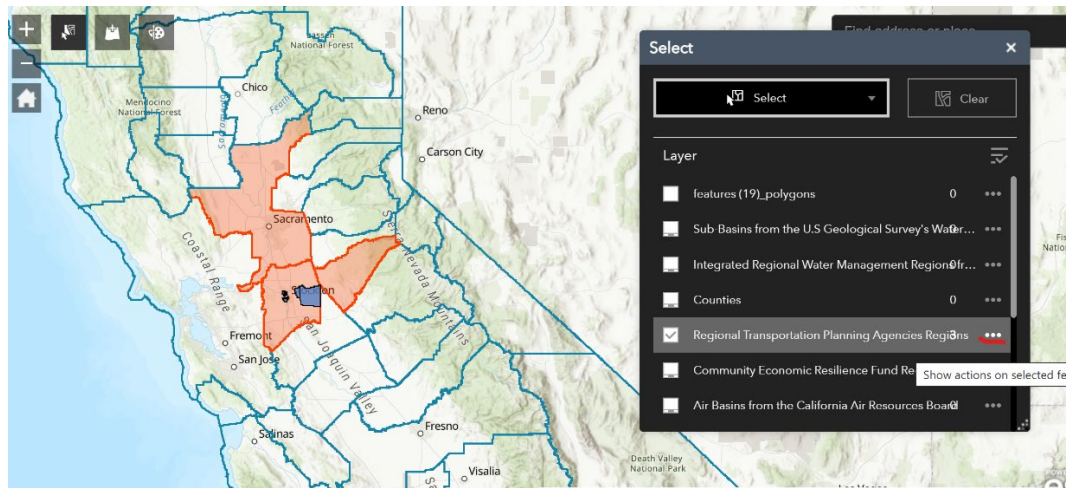


You will need to submit your regional boundaries as a GeoJSON file within a zip file for your final application.

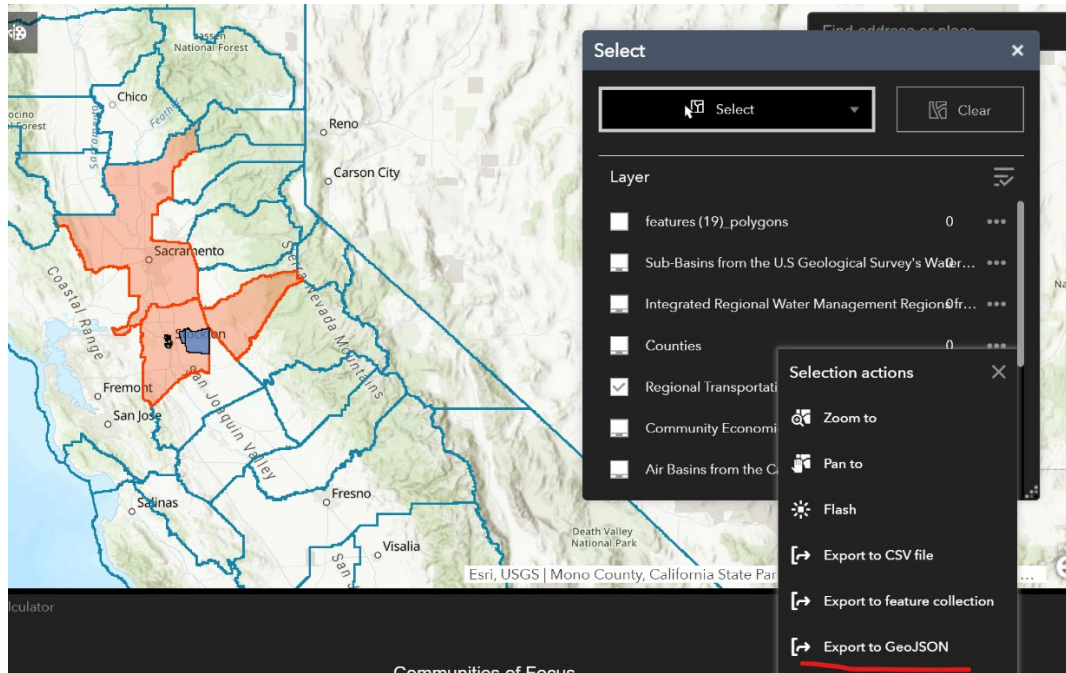
- To do this, find your regional boundary in a dialogue box of the select tool and click the three dots to the right to open the drop-down menu.



## Regional Climate Collaboratives Program Round 2 Application Resource

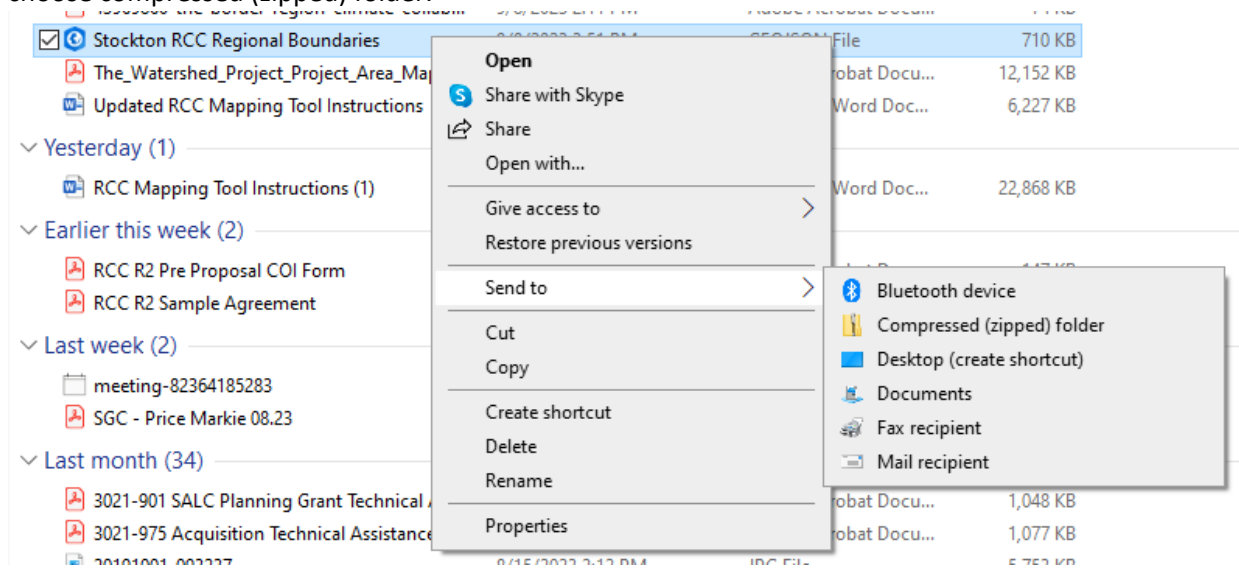


- Then choose export to GeoJSON from the drop-down menu. It's important to name your GeoJSON file something like “[Insert RCC Name] Regional Boundaries” so you can easily locate the file later.



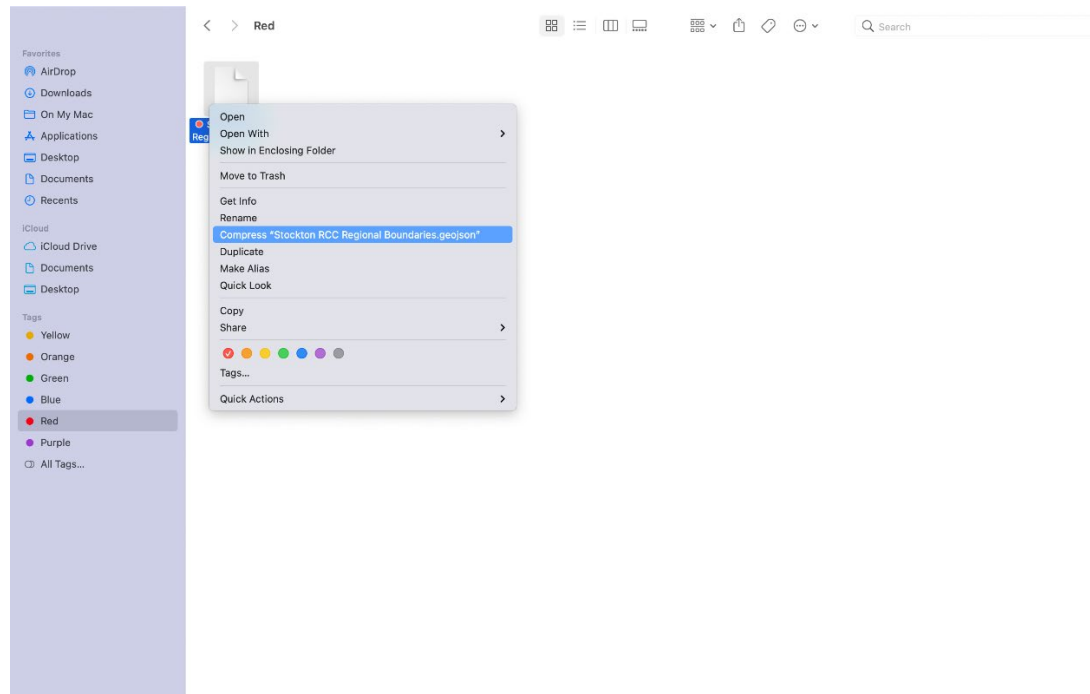
## Regional Climate Collaboratives Program Round 2 Application Resource

- For windows users, find your regional boundary GeoJSON file and right click it. Choose “send to” from the drop-down menu and then choose compressed (zipped) folder.



- For Mac users, find your regional boundary GeoJSON file and right click it. Chose “compress” from the drop-down menu.

## Regional Climate Collaboratives Program Round 2 Application Resource



### If you are using your own Regional Boundary in the RCC Mapping Tool:

You can use the add data tool to add in any regional boundaries you have access to that are not a part of the regional layers we provided.

Click the Add Data tool (circled in red below).

## Regional Climate Collaboratives Program Round 2 Application Resource

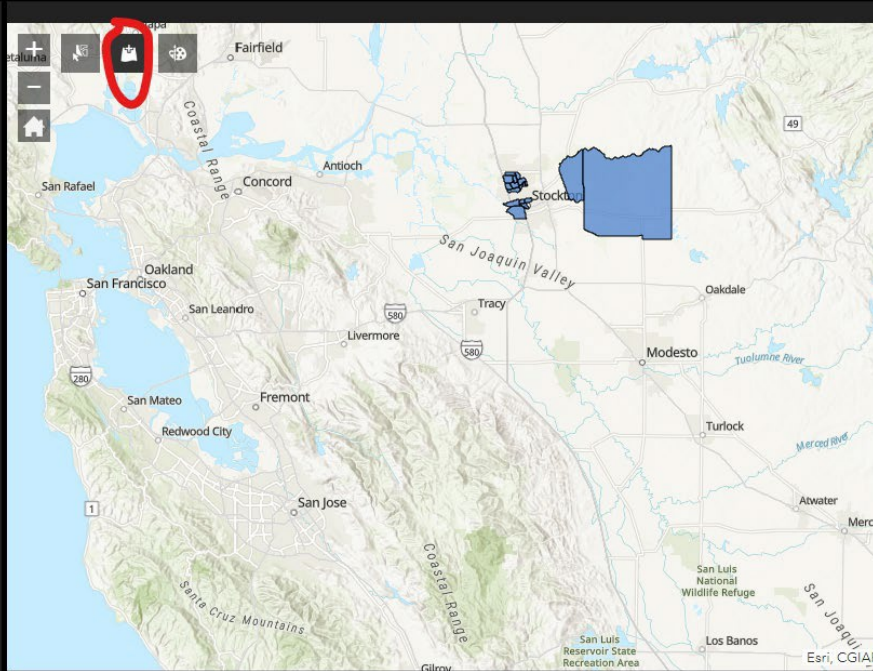
### Regional Climate Collaboratives Mapping Tool

a mapping tool to select Communities of Focus for the RCC application

Layer List

Layers

- features (19\_polygons) ...
- Sub-Basins from the U.S Geological Survey's Watershed Boundary Dataset ...
- Integrated Regional Water Management Regions from the California Department of Water Resources ...
- Counties ...
- Regional Transportation Planning Agencies Regions ...
- Community Economic Resilience Fund Regions ...
- Air Basins from the California Air Resources Board ...
- Air Districts from the California Air Resources Board ...
- Sacramento - San Joaquin Primary and Secondary Delta ...
- Metropolitan Planning Organizations (MPOs) ...
- Council of Governments (COGs) ...
- AB1550 Low Income Communities ...
- Disadvantaged Communities from the California Department of Water Resources ...
- CalEnviroScreen 4.0 Disadvantaged Communities ...
- SB535 Tribal Area Boundaries ...
- Census Tracts and Tribal Area Boundaries ...



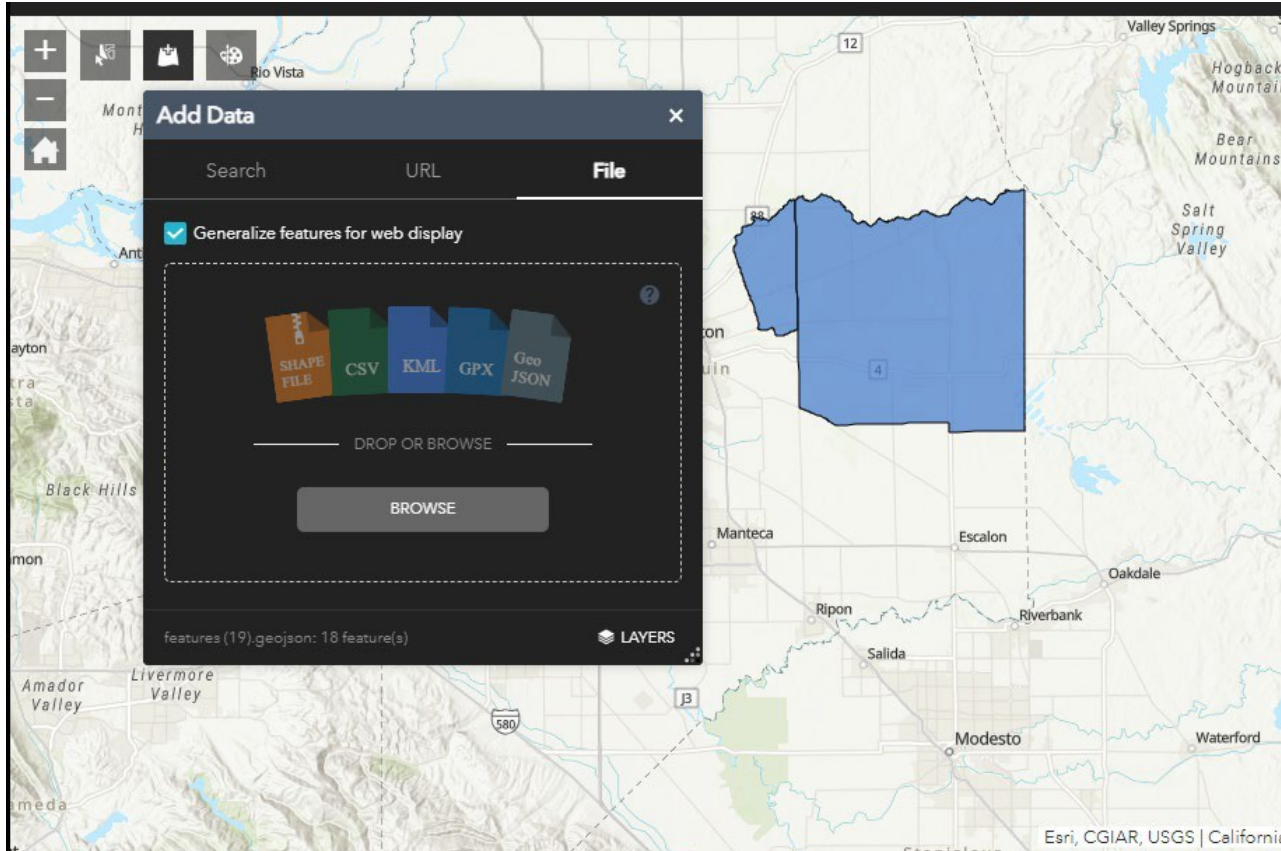
Communities of Focus Calculator

Communities of Focus





Select the file option.

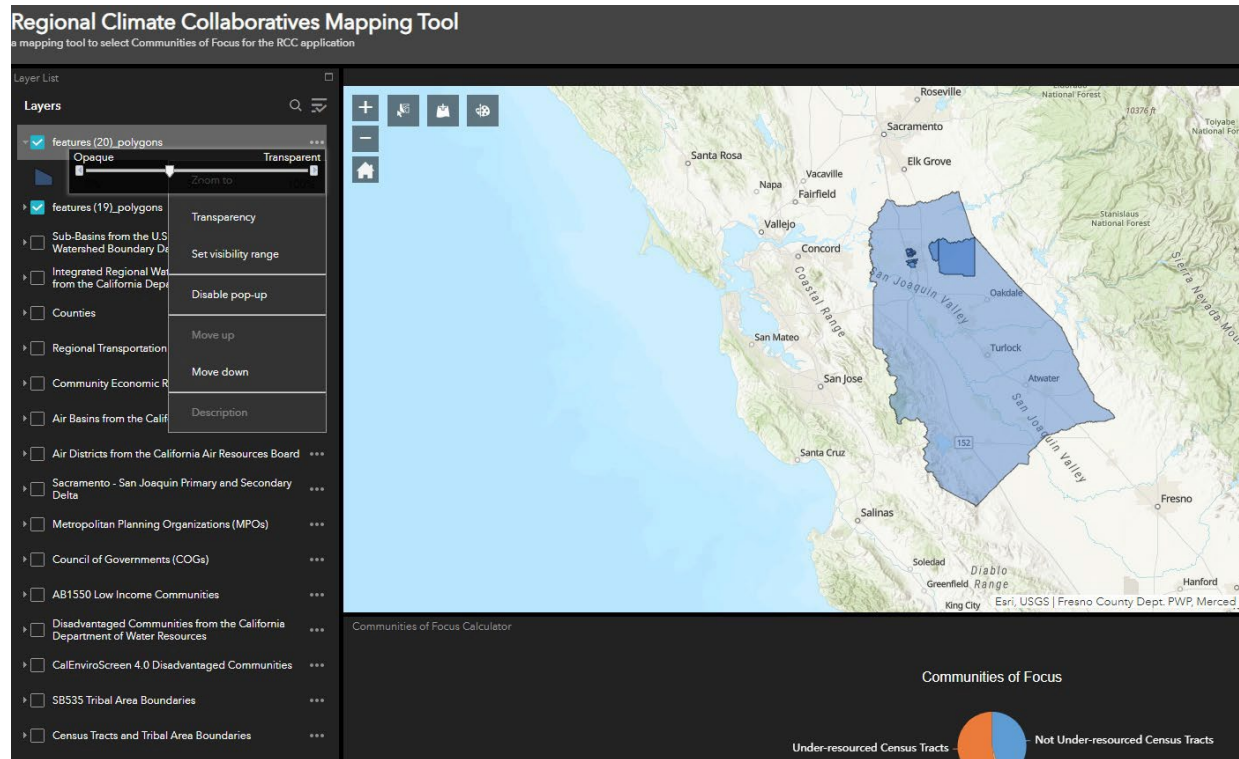


## Regional Climate Collaboratives Program Round 2 Application Resource

Drag your regional boundary into the add data toolbox or browse your computer for the file.

Your regional boundary will be added to the **Layer List**. Click the three grey dots to the right of your regional boundary and click on transparency.

- Use the slider that appears to adjust the transparency so your Communities of Focus and Regional Boundary look distinct from each other.

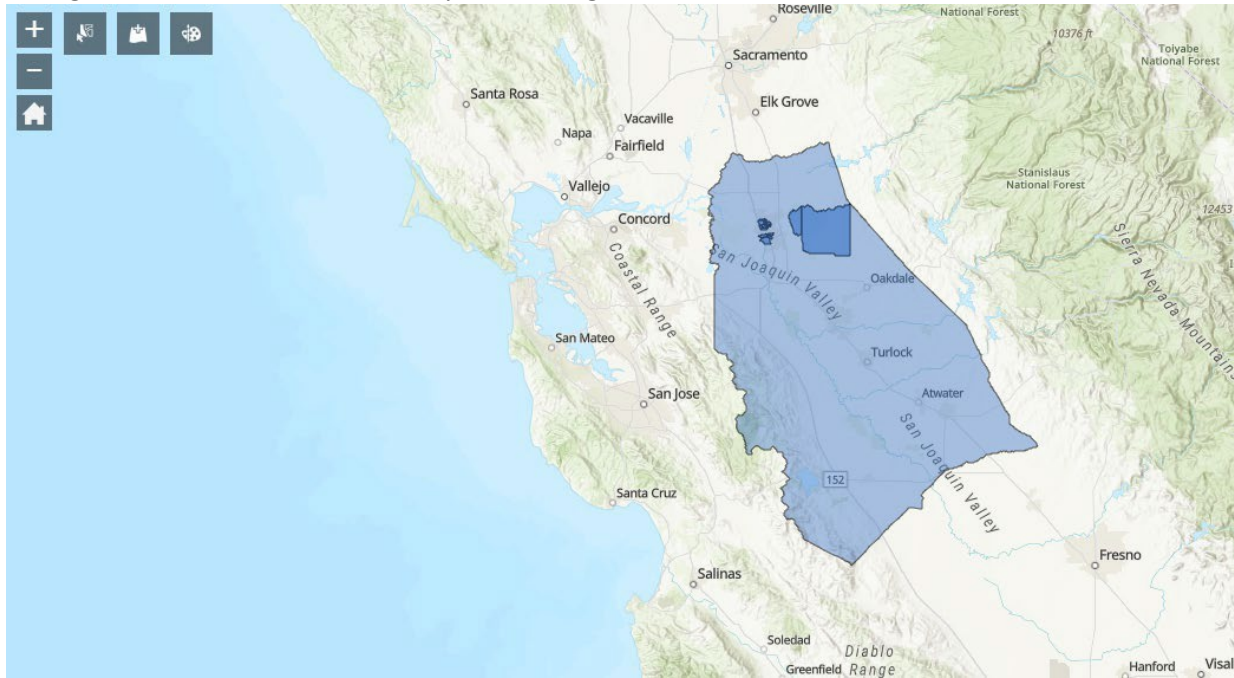


Screenshot your Region and Communities of Focus. This will serve as your project area map.

- For Windows users: Press and hold shift, Windows key, and S key at once to screenshot on Windows.
- For Mac users: Press and hold shift, command, 3 at once to screenshot on Mac.

## Regional Climate Collaboratives Program Round 2 Application Resource

Congratulations! You have selected your RCC Region.



You will need to submit your existing regional boundary in a zip file for your final application.

- For Windows users, locate your regional boundary file and right click it. Choose “send to” from the drop-down menu and then choose compressed (zipped) folder.
- For Mac users, locate your regional boundary file and right click it. Choose “compress” from the drop-down menu.

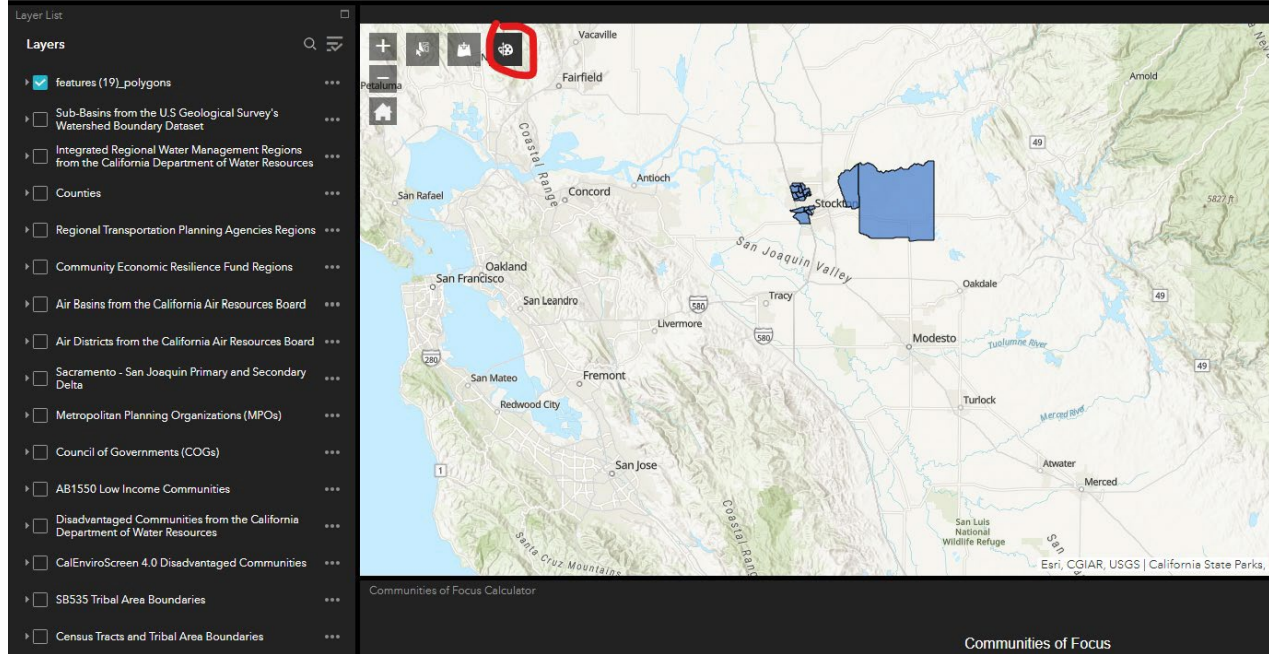
**If you would like to Draw Your Own Regional Boundary:**

You can use the draw tool to draw custom regional boundaries.

Click the Draw tool (circled in red below).

**Regional Climate Collaboratives Mapping Tool**

a mapping tool to select Communities of Focus for the RCC application





## Regional Climate Collaboratives Program Round 2 Application Resource

Choose the polygon or freehand polygon drawing modes (underlined in red below).

**Regional Climate Collaboratives Mapping Tool**  
a mapping tool to select Communities of Focus for the RCC application

Layer List

Layers

- features (19)\_polygons
- Sub-Basins from the U.S Geological Survey's Watershed Boundary Dataset
- Integrated Regional Water Management Regions from the California Department of Water Resources
- Counties
- Regional Transportation Planning Agencies Regions
- Community Economic Resilience Fund Regions
- Air Basins from the California Air Resources Board
- Air Districts from the California Air Resources Board
- Sacramento - San Joaquin Primary and Secondary Delta
- Metropolitan Planning Organizations (MPOs)
- Council of Governments (COGs)
- AB1550 Low Income Communities
- Disadvantaged Communities from the California Department of Water Resources
- CalEnviroScreen 4.0 Disadvantaged Communities
- SB535 Tribal Area Boundaries
- Census Tracts and Tribal Area Boundaries

Draw

Select draw mode

- Point
- Line
- Polyline
- Polygon
- Freehand Polygon
- Arrow
- Text

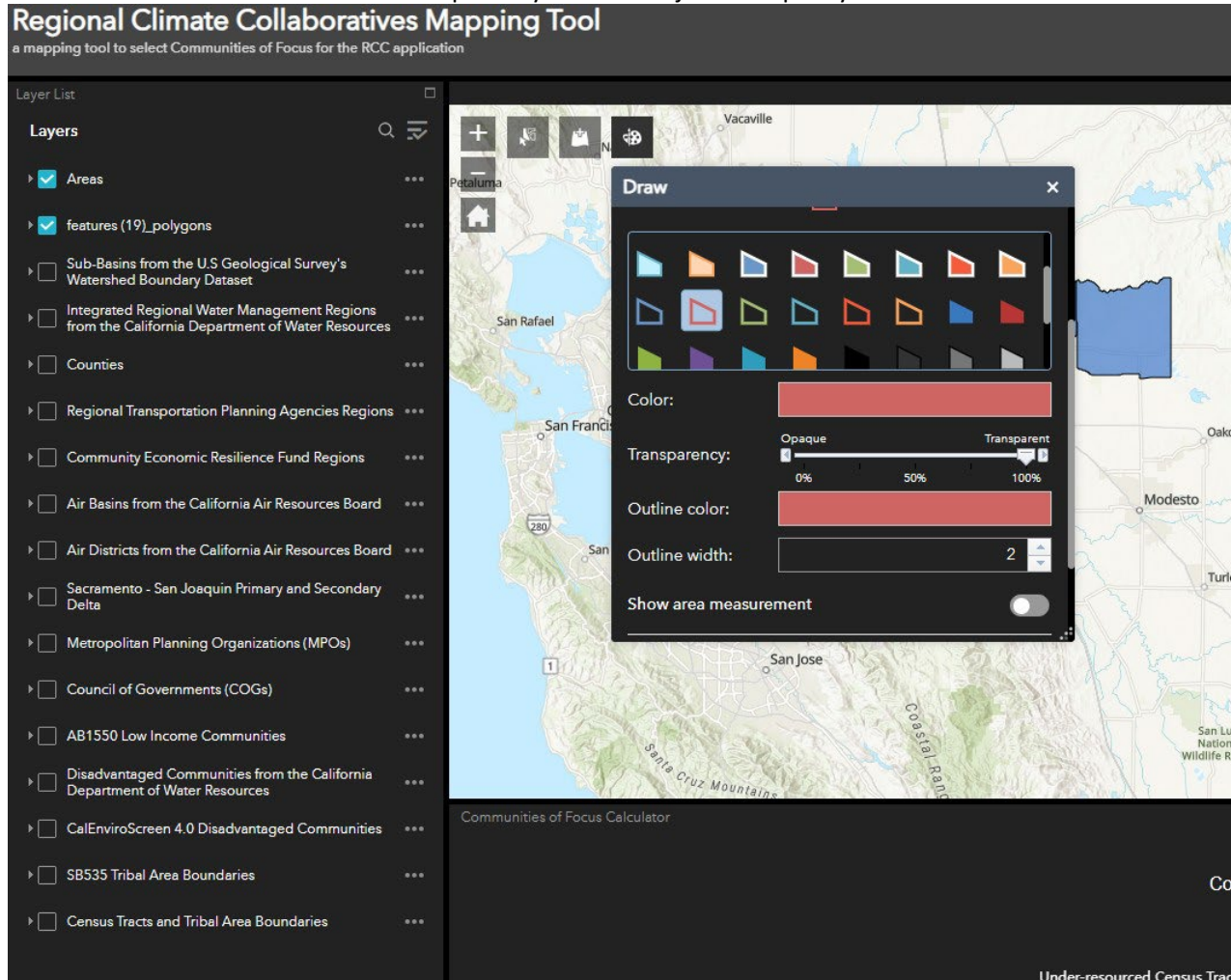
Undo Redo Clear

Communities of Focus Calculator

Communities of Focus

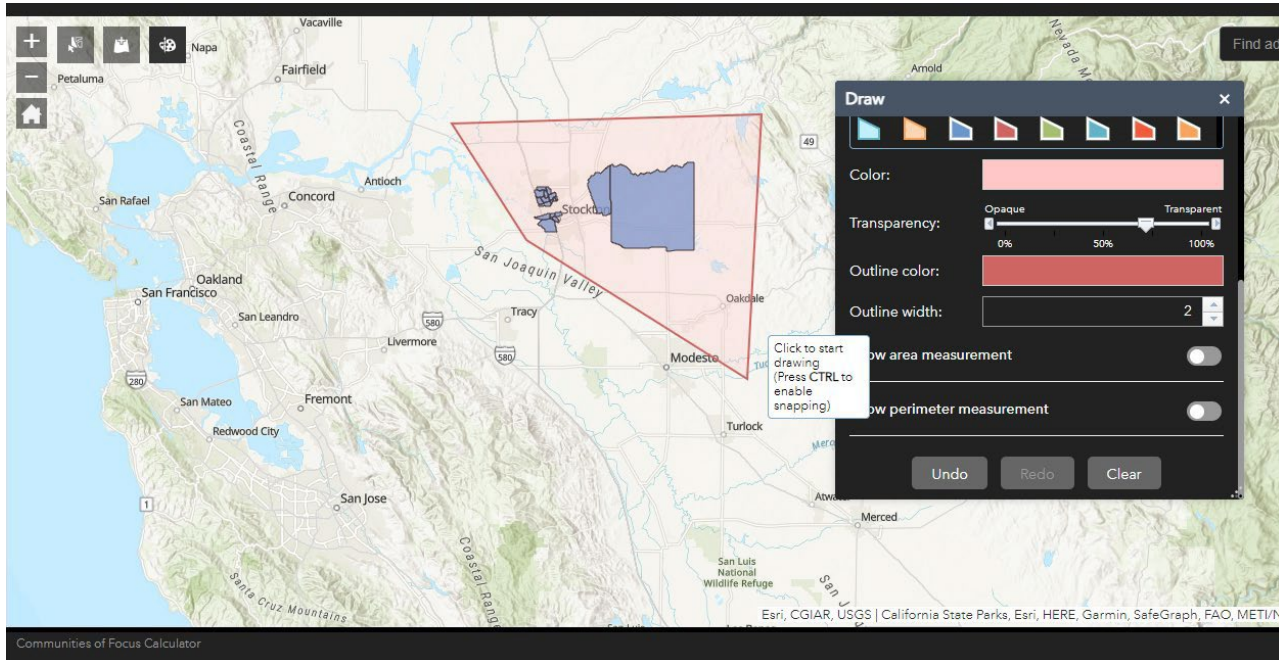
Choose a drawing style that is easy to distinguish from your Communities of Focus.

- You can use the transparency slider to adjust the opacity.



## Regional Climate Collaboratives Program Round 2 Application Resource

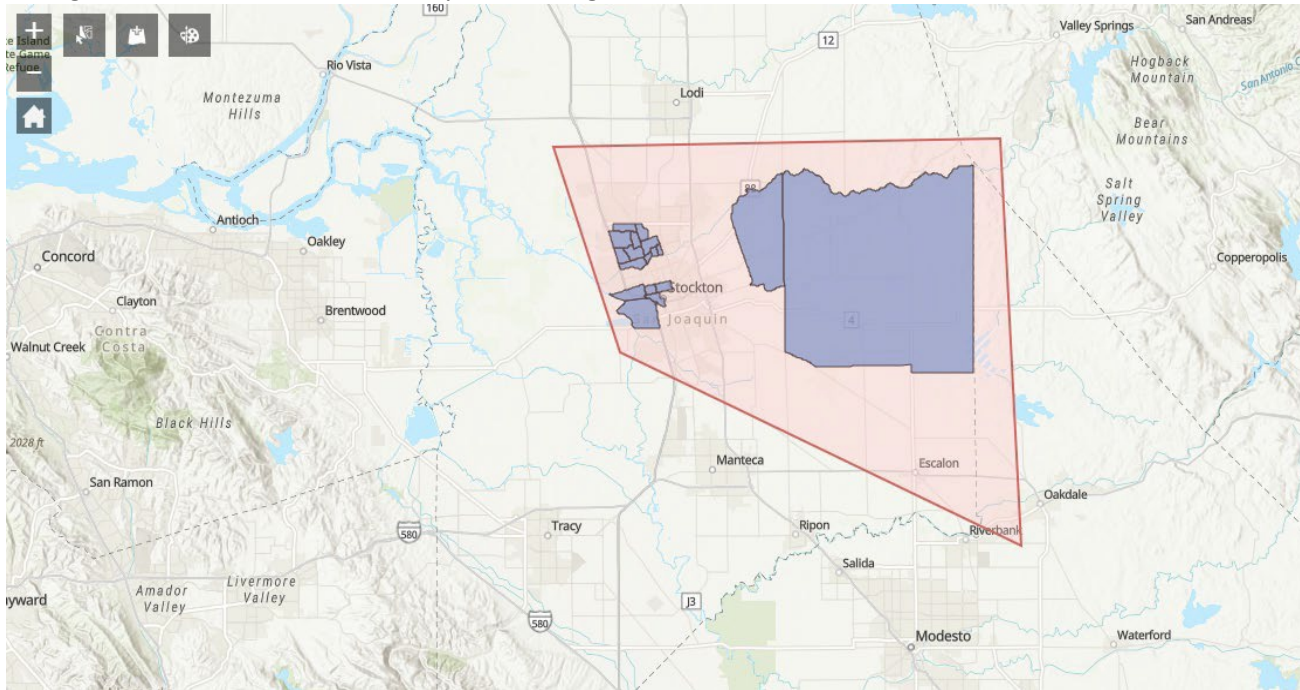
Draw your Region boundary by using your mouse to draw a shape over your Communities of Focus. Double-click your mouse when you are finished drawing your shape.



Screenshot your Region and Communities of Focus. This will serve as your project area map.

- Press and hold shift, Windows key, and S key at once to screenshot on Windows.
- Press and hold shift, command, 3 at once to screenshot on Mac.

Congratulations! You have selected your RCC Region.

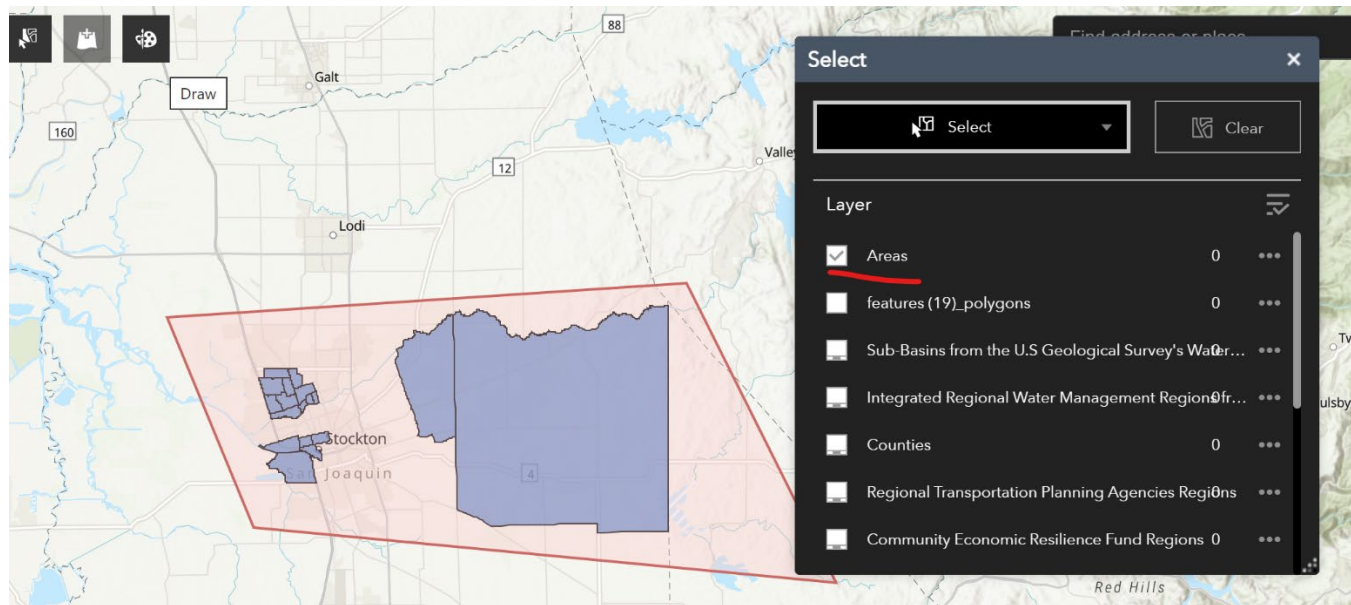


You will need to submit your drawn regional boundary as a GeoJSON file within a zip file for your final application.

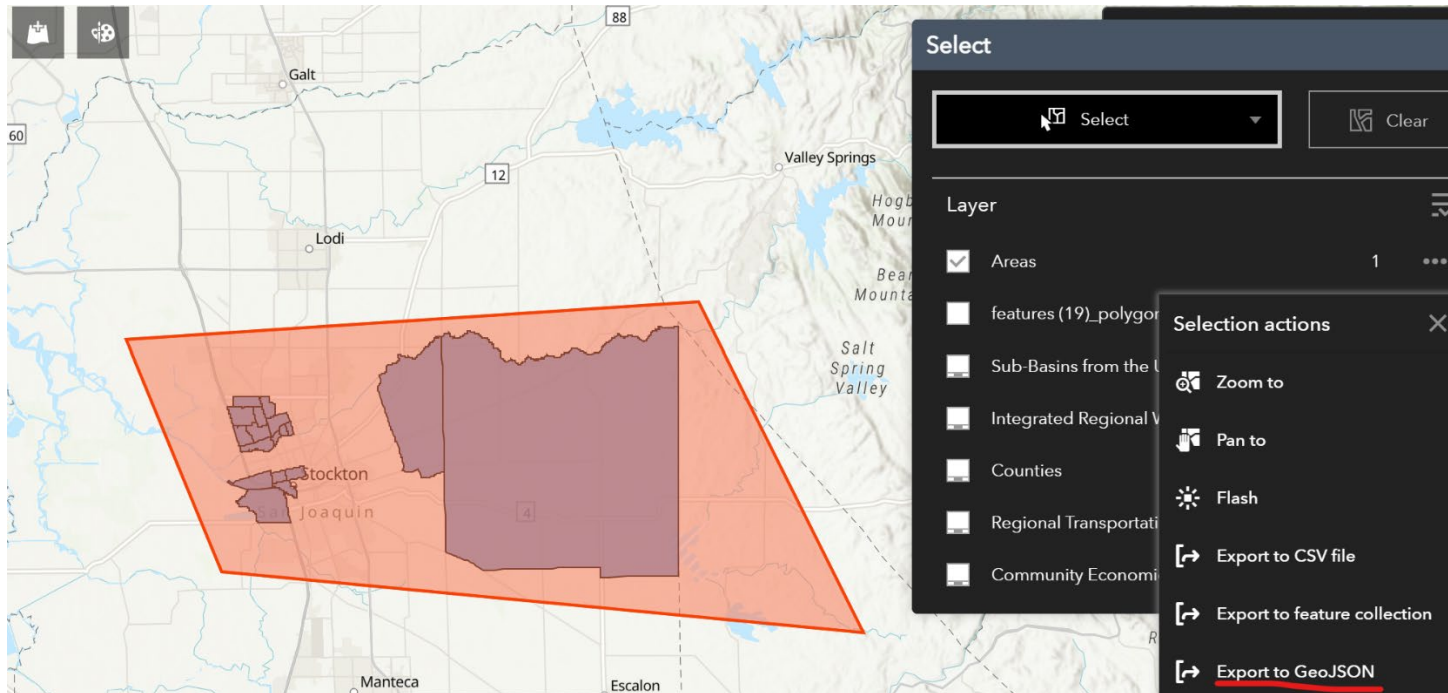
- To do this, open the select tool and ensure that your drawn regional boundary (named “Areas”) is the only layer selected in the select dialogue box.



## Regional Climate Collaboratives Program Round 2 Application Resource



- Click the rectangular button that says "select".
- Click on the dropdown arrow to choose either select by rectangle or select by polygon.
- Drag your mouse over your drawn regional boundary.
- Click the three dots to the right of your drawn regional boundary in the select dialogue box to open the drop-down menu.
- Choose export to GeoJSON from the drop-down menu. It's important to name your file something like "[Insert RCC Name] Regional Boundaries" so you can easily locate the file later.



- For Windows users, find your regional boundary GeoJSON file and right click it. Choose “send to” from the drop-down menu and then choose compressed (zipped) folder.
- For Mac users, locate your regional boundary GeoJSON file and right click it. Choose “compress” from the drop-down menu.

## Data Sources

### Air Basins from the California Air Resources Board

- Information [about the Air Basins map from the California Air Resources Board](#)
- [Air Basins map from the California Air Resources Board created by the Governor's Office of Planning and Research](#) derived from [the California Air Resources Board GIS Library](#)

### Air Districts from the California Air Resources Board

- Information [about the Air Districts map](#)
- [Air Districts map from California Air Resources Board created by the Governor's Office of Planning and Research](#) derived from [the California Air Resources Board GIS Library](#)

### CalEnviroScreen 4.0

- Information [about the CalEnviroScreen 4.0 map](#)
- [CalEnviroScreen 4.0 map](#)

### Community Economic Resilience Fund (CERF) Regions

- Information [about the Community Economic Resilience Fund Regions map](#)
- [Community Economic Resilience Fund \(CERF\) Regions map](#) derived from [the counties map from CALFIRE](#)

### Councils of Governments

- Information [about the California Councils of Governments map](#)
- [California Councils of Governments Map created by the Governor's Office of Planning and Research](#)

### Counties

- [CALFIRE Counties map](#)

### Disadvantaged Communities tool from the California Department of Water Resources (DWR)

- Information [about the Disadvantaged Communities tool from the California Department of Water Resources](#)

- [Disadvantaged Communities map from the California Department of Water Resources](#)

**Integrated Regional Water Management Regions from the California Department of Water Resources**

- Information [about the Integrated Regional Water Management Regions map](#)
- [Integrated Regional Water Management Regions map](#)

**Metropolitan Planning Organizations**

- Information [about the Metropolitan Planning Organization map](#)
- [Metropolitan Planning Organizations map created by the Governor's Office of Planning and Research](#)

**Priority populations map from the California Air Resources Board (which contains AB1550 income designations)**

- Information [about the Priority Populations map from the California Air Resources Board](#)
- [Priority Populations map from the California Air Resources Board](#)

**Regional Transportation Planning Agencies Regions**

- Information [about the Regional Transportation Planning Agencies Regions map](#)
- [Regional Transportation Planning Agencies Regions map](#)

**Sacramento – San Joaquin Primary and Secondary Delta**

- Information [about the Sacramento – San Joaquin Primary and Secondary Delta](#)
- [Sacramento – San Joaquin Primary and Secondary Delta map](#)

**SB 535 Tribal Boundaries**

- Information [about the SB 535 Tribal Boundaries map](#)
- [SB 535 Tribal Boundaries Map](#)

**Sub-basins from the U.S Geological Survey's Watershed Boundary Dataset**

- Information [about the Sub-basins map from the U.S Geological Survey's Watershed Boundary](#)
- Sub-basins from the U.S Geological Survey's Watershed Boundary Dataset map